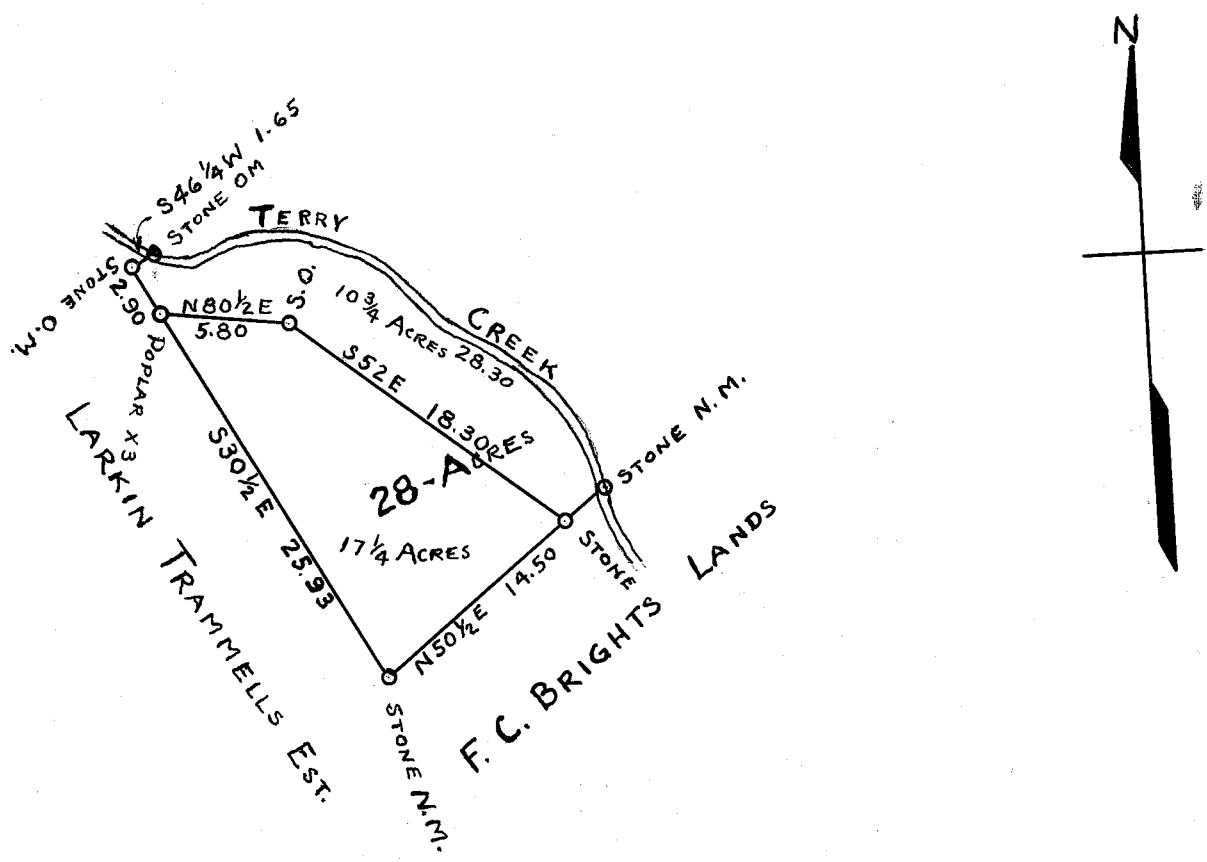


8969 Filed This 25 day of Aug. 1944
 And Recorded in Vol. K Page 264 at M.

Ollie Farnsworth -
 Register Mesne Conveyance Greenville County, S.C.



SCALE 10- CHAINS = 1 INCH

STATE OF SOUTH CAROLINA :
 GREENVILLE COUNTY :

By the request of F. C. Bright I have surveyed and cut off the above piece of land for H. O. Thurston and find it to contain 28 Acres and has such shape marks and boundries as the above Plat represents.

Surveyed March 17, 1925.

W. A. Hester,
 Surveyor.

(Impression Seal)

264