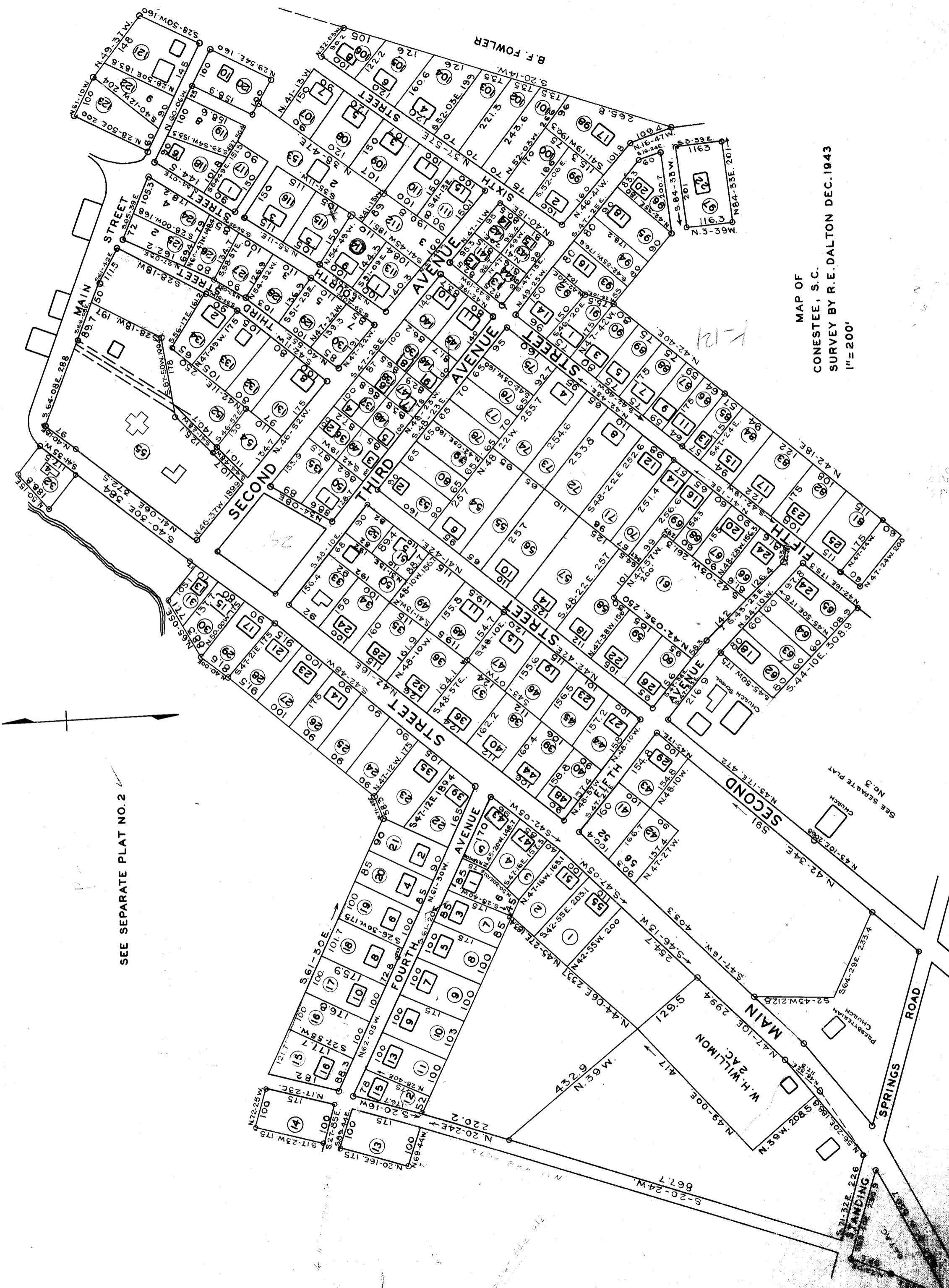
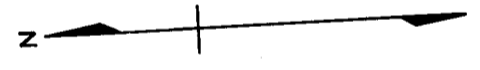


MAP OF  
CONESTEE, S. C.  
SURVEY BY R. E. DALTON DEC. 1943  
1"=200'



SEE SEPARATE PLAT NO. 2



1-12

320

STANDING

230.3

571.32E

226

867.7

S-20-24W

N-20-24E

220.2

M.6E. N

622.4

N-44-06E 237

N-45-27E 153

403.3

403.3

403.3

403.3

403.3

403.3

403.3

403.3

403.3

403.3

403.3

403.3

403.3

403.3

403.3

403.3

403.3

403.3

403.3

403.3

403.3

403.3

403.3

403.3

403.3

403.3

403.3

403.3

403.3

403.3

403.3

403.3