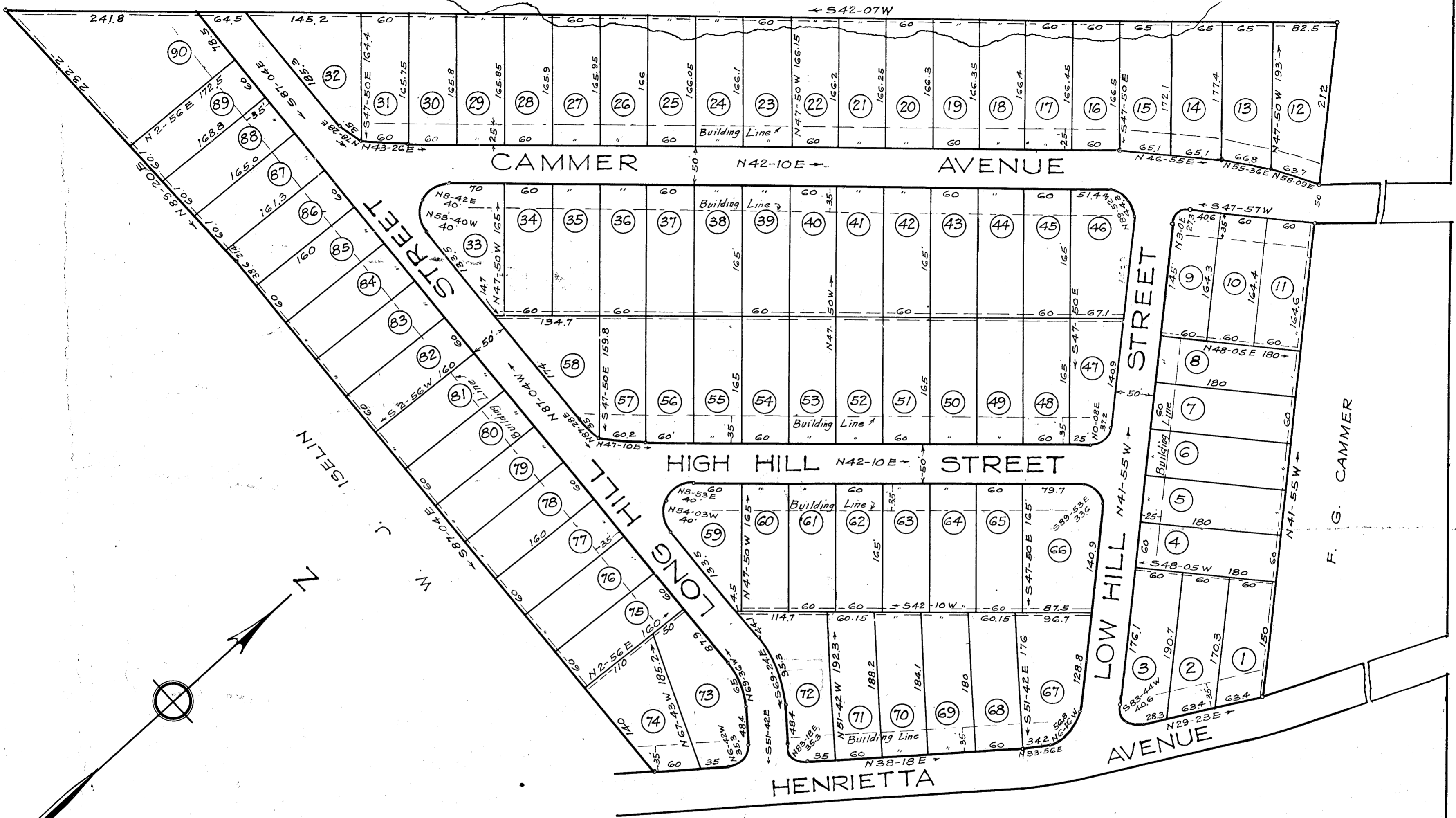


J. R. JENKINSON



MAP OF  
 AUGUSTA ROAD HILLS  
 NEAR GREENVILLE S. C.

Scale 1"=100' Dec. 1940

PROPERTY OF SARAH R. BECK  
 TRAXLER REAL ESTATE CO.  
 EXCLUSIVE SELLING AGTS.

DALTON & NEVES

Iron Pins at all Corners.  
 5' Reserved across rear Lots for Utilities  
 Revision of Lots 9-10-11 made June 1941  
 " " " 14-15 " Oct. 1941