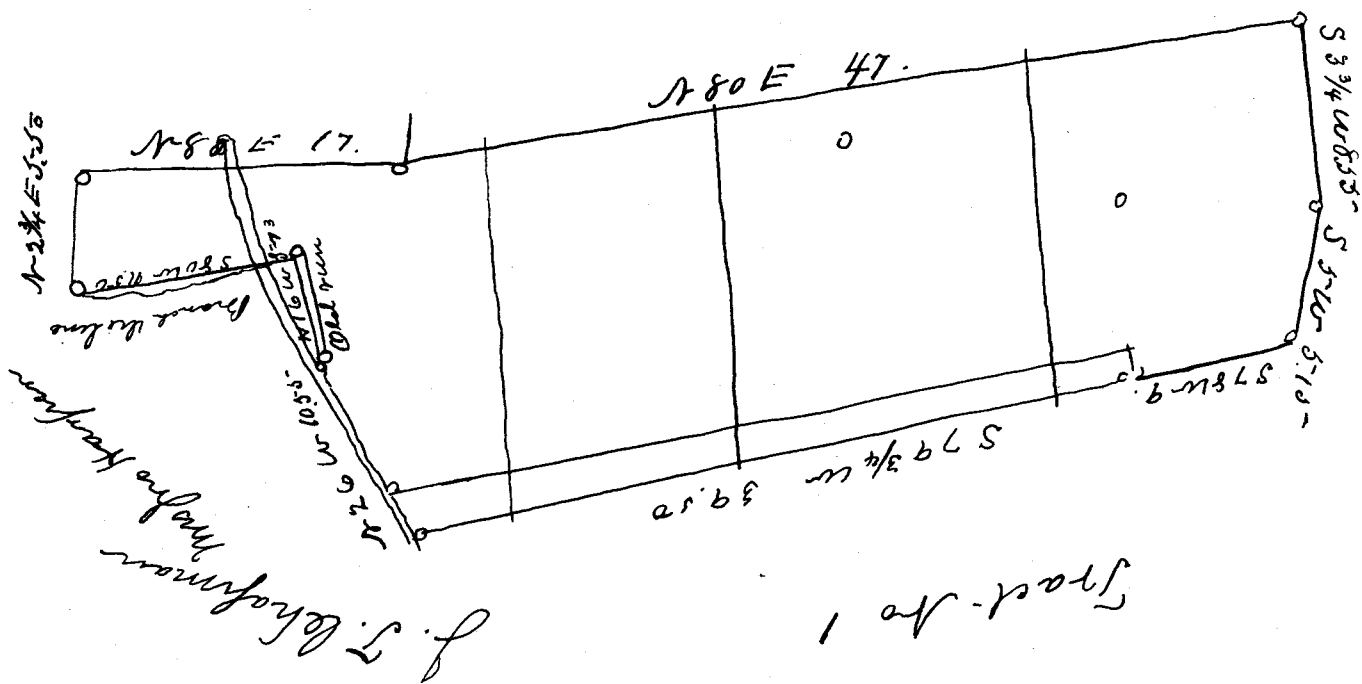


Tract No 3

J. H. Grayham Wm Scott



Tract No 1

South Carolina  
Greenville County

By direction of James Scott, I have surveyed his tract of Land on Mountain level in Dublin Township, containing 474 acres and have divided it into five tracts-

The above Plat represents tract No 2 and contains 96 acres  
Surveyed December 6th-1899.

J. M. Cox  
Surveyor