

SOUTHERN RAILWAY SYSTEM
EASTERN LINES

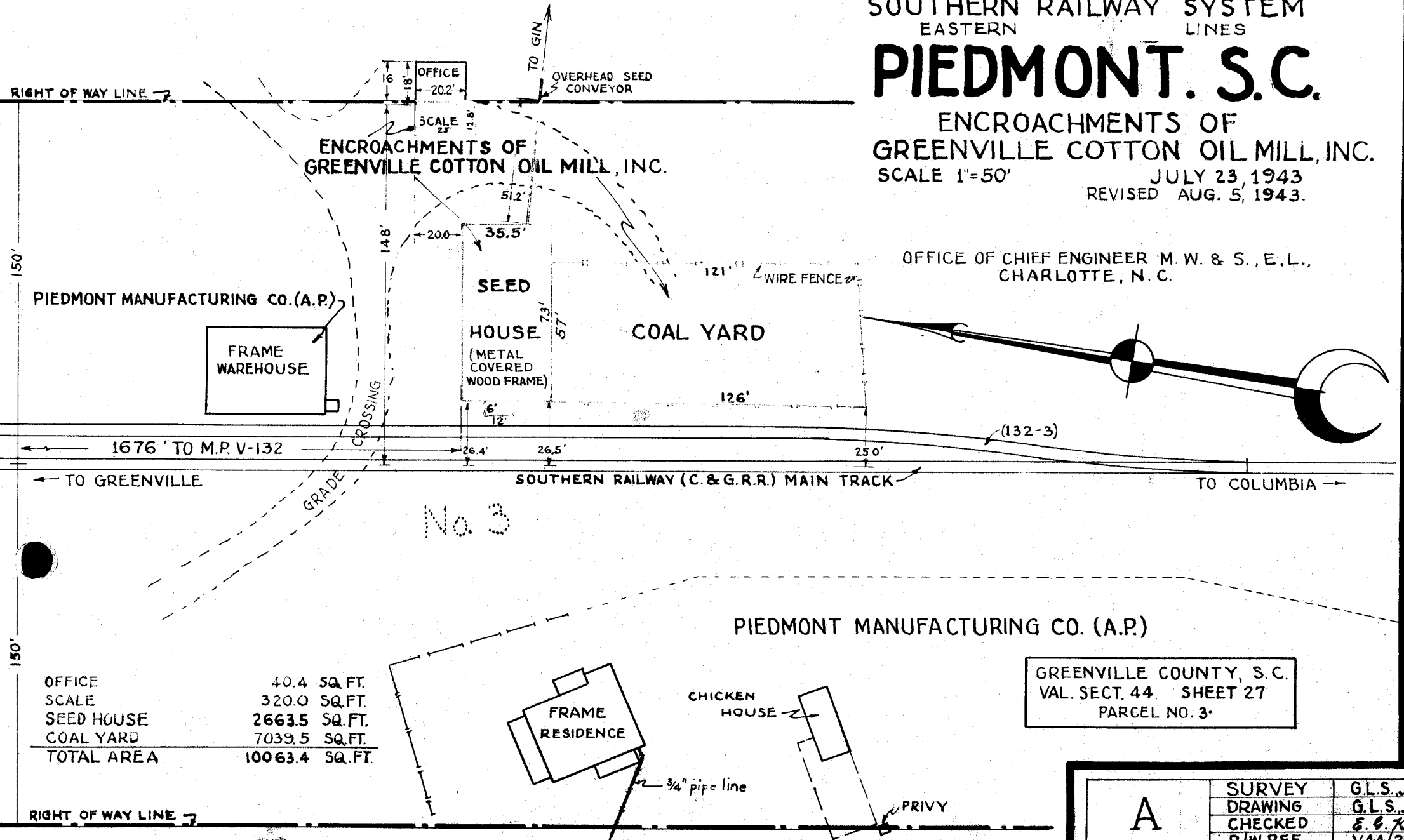
PIEDMONT. S.C.

ENCROACHMENTS OF
GREENVILLE COTTON OIL MILL, INC.

SCALE 1"=50'

JULY 23, 1943
REVISED AUG. 5, 1943.

OFFICE OF CHIEF ENGINEER M. W. & S., E.L.,
CHARLOTTE, N. C.



OFFICE	40.4 SQ. FT.
SCALE	320.0 SQ. FT.
SEED HOUSE	2663.5 SQ. FT.
COAL YARD	7039.5 SQ. FT.
TOTAL AREA	10063.4 SQ. FT.

GREENVILLE COUNTY, S. C.
VAL. SECT. 44 SHEET 27
PARCEL NO. 3.

A 8741	SURVEY	G.L.S. Jr.
	DRAWING	G.L.S. Jr.
	CHECKED	E. G. W.
	R/W REF.	V44/27
	DRAW. REF.	A-8715
	NOTE BOOK	1398
FILE NO.	M-7033	

RIGHT OF WAY LINE

150'

150'

No. 3

10