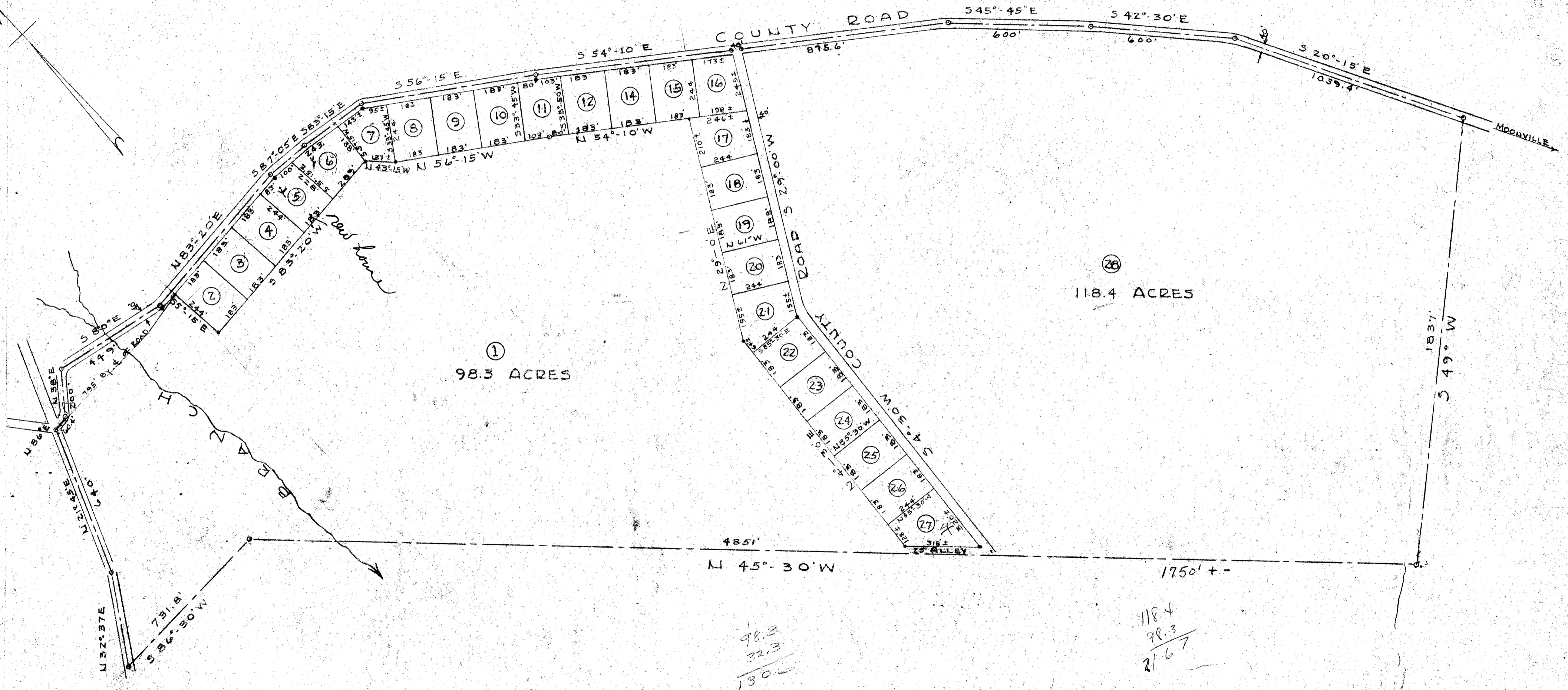


NOTE:

OUTSIDE BOUNDARY LINES PLATTED
FROM SURVEY OF B.W. BURDETTE
PROPERTY BY W.J. RIDDLE, SURVEYER - 1937



SUBMITTED FOR RECORD

①
98.3 ACRES

②
118.4 ACRES

4851'
N 45°-30' W

1750' ±

98.3
32.3
130.6

118.4
98.3
216.7

— S U B D I V I S I O N —

— FOR —
— R · A · B L A · I · N · E —

— LOCATED NEAR —
— P I E D M O N T , G R E E N V I L L E C O U N T Y , S . C . —

SCALE: 1"=300' FEB. 1946

— P I C K E L L & P I C K E L L E N G R S . G R E E N V I L L E , S . C . —

#11738
Filed This 10 day of July 1946
And Recorded in Vol. P Page 59 of M.
Ollie Gamworth
Register of Deeds Conveyance Greenville County, S.C.

