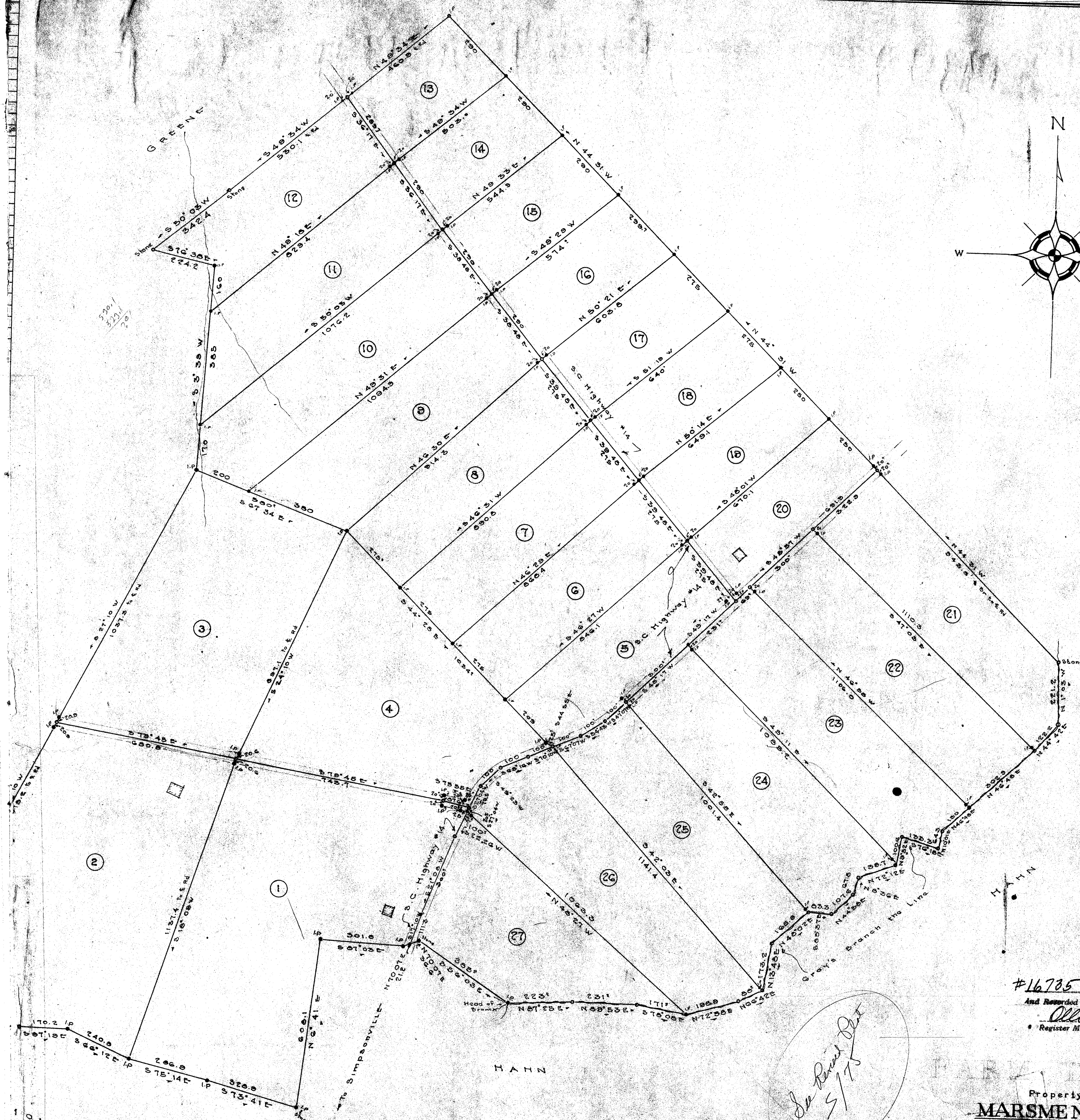
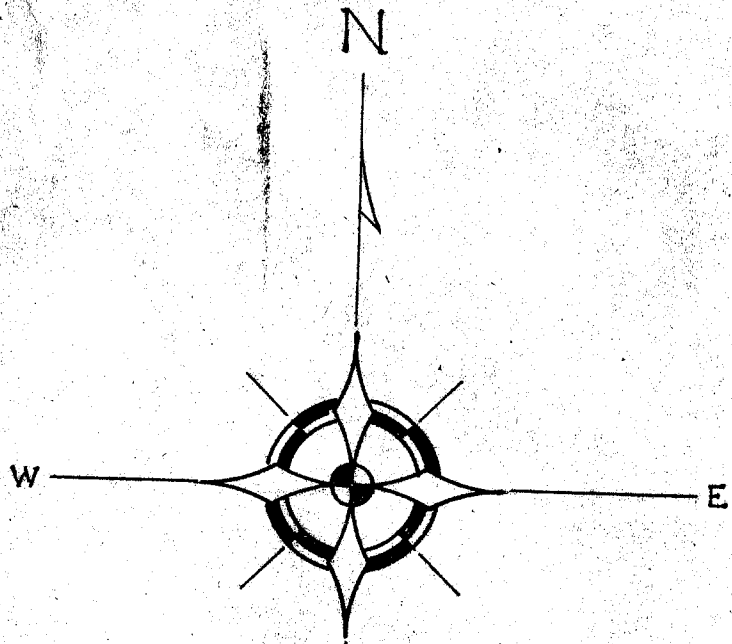


RECORDED
INDEXED
MAY 13 1946
REGISTER OF DEEDS
GREENVILLE COUNTY, S.C.



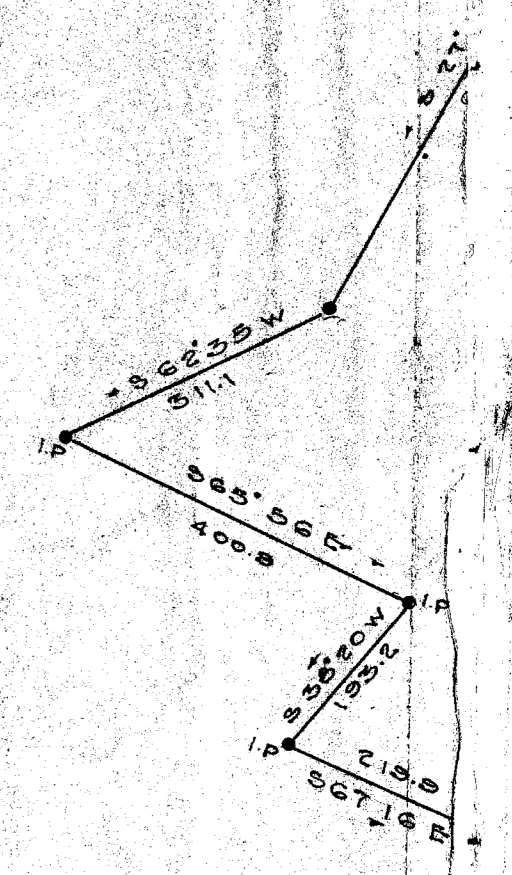
#16735 Filed This 3 day of Oct. 1946
And Recorded in Vol. 91 Page 91
Ollie J. Jamison
Register Mesne Conveyance Greenville County, S.C.

*See Record Plat
5/75*

Property of
MARSMEN INC
Near
SIMPSONVILLE, S.C.
Scale 1" = 200' Aug. 1946
Datta & Neves

NOTE:
Courses and Distances of tract sides
lateral to Roads are given to
Center line of Roads and Iron pins
along side of Roads are offset on
courses as shown.

TRACT No	ACRES	PRICE
1	18.02	
2	17.47	
3	13.37	
4	12.38	
5	5.50	
6	5.41	
7	5.55	
8	5.69	
9	7.29	
10	8.05	
11	6.20	
12	5.29	
13	3.20	
14	3.48	
15	3.72	
16	3.98	
17	3.76	
18	4.28	
19	3.97	
20	4.10	
21	7.51	
22	7.66	
23	7.91	
24	7.75	
25	7.15	
26	8.35	
27	6.85	
TOTAL	183.70	



HOLLAND