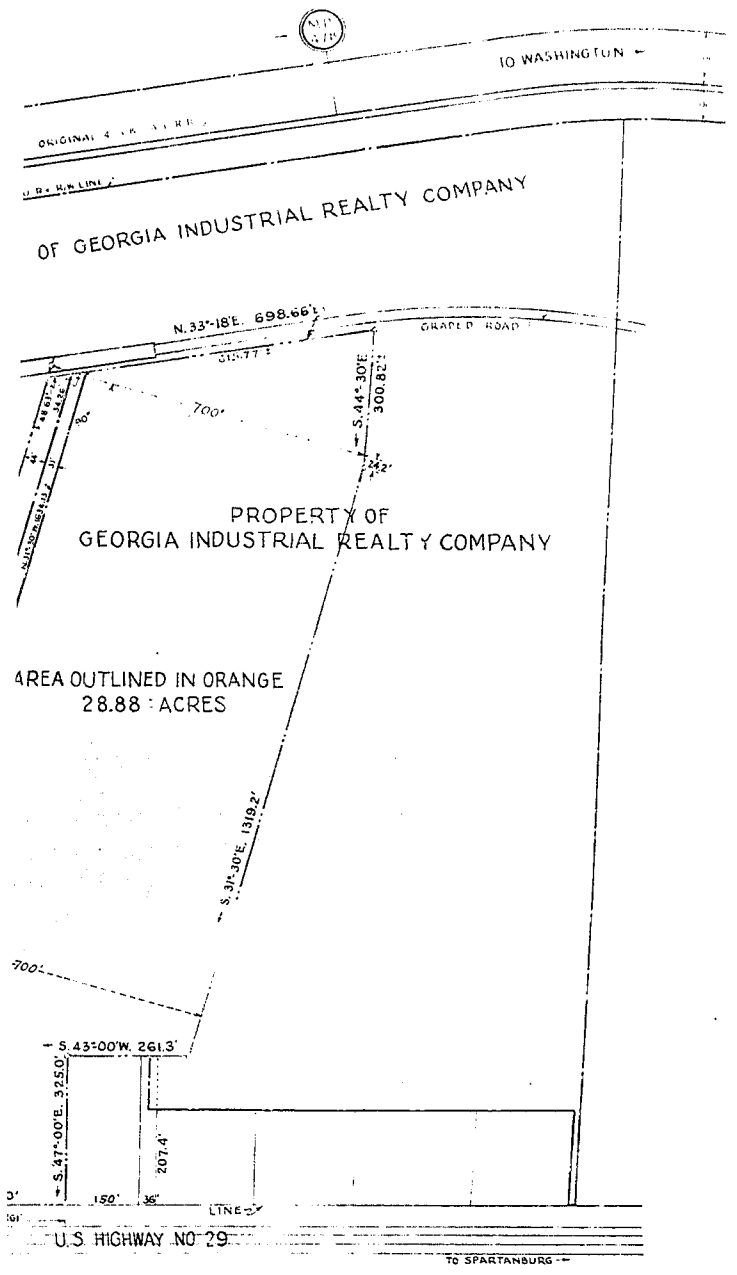
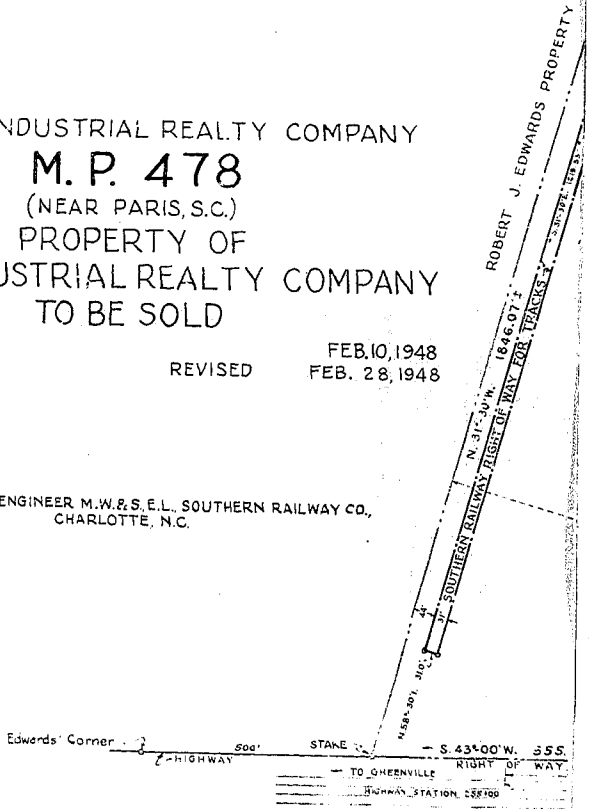


GEORGIA INDUSTRIAL REALTY COMPANY
M. P. 478
 (NEAR PARIS, S.C.)
 PROPERTY OF
 GEORGIA INDUSTRIAL REALTY COMPANY
 TO BE SOLD

SCALE 1"=200'

FEB. 10, 1948
 REVISED FEB. 28, 1948

OFFICE OF CHIEF ENGINEER M.W.S.E.L., SOUTHERN RAILWAY CO., CHARLOTTE, N.C.



AREA OUTLINED IN ORANGE
 28.88 ACRES

E 1438	SURVEY	G. L. S. JR.
	DRAWING	G. L. S. JR.
	CHECKED	
	R.W. REF.	V II/16
	DRAW. REF.	E-14-35
	NOTE BOOK	1587
FILE NO.	M-8661	