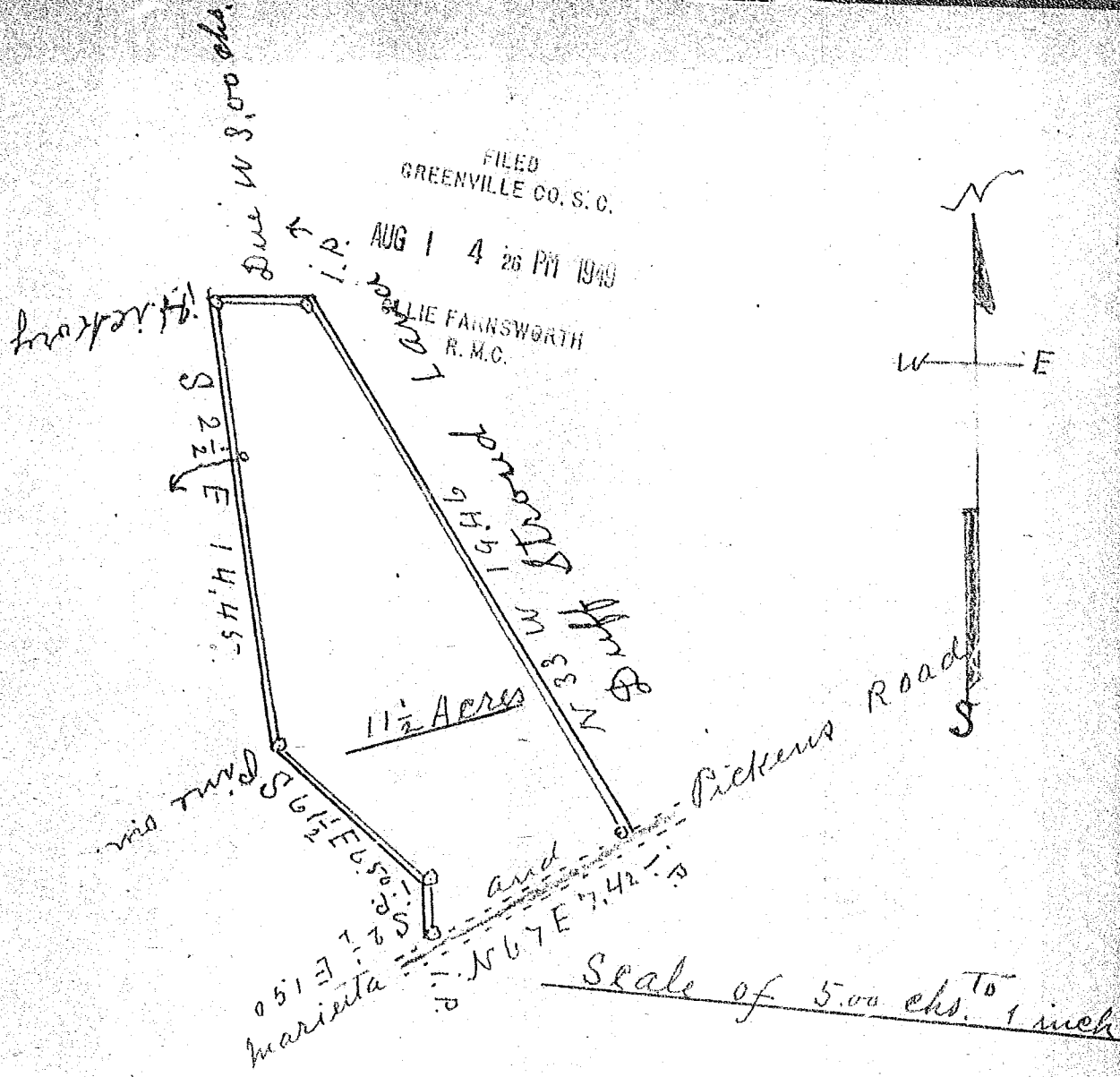


FILED
GREENVILLE CO. S. C.

AUG 1 4 26 PM 1949

LILLIE FARNSWORTH
R. M. C.



South Carolina
Greenville County

By the request of
Duff Stiond I have
surveyed the above
piece of land for
J. M. Stiond and
Adith Stiond and
find it to contain
1 1/2 Acres surveyed
May 14th 1949
H. A. Farnsworth, S.