

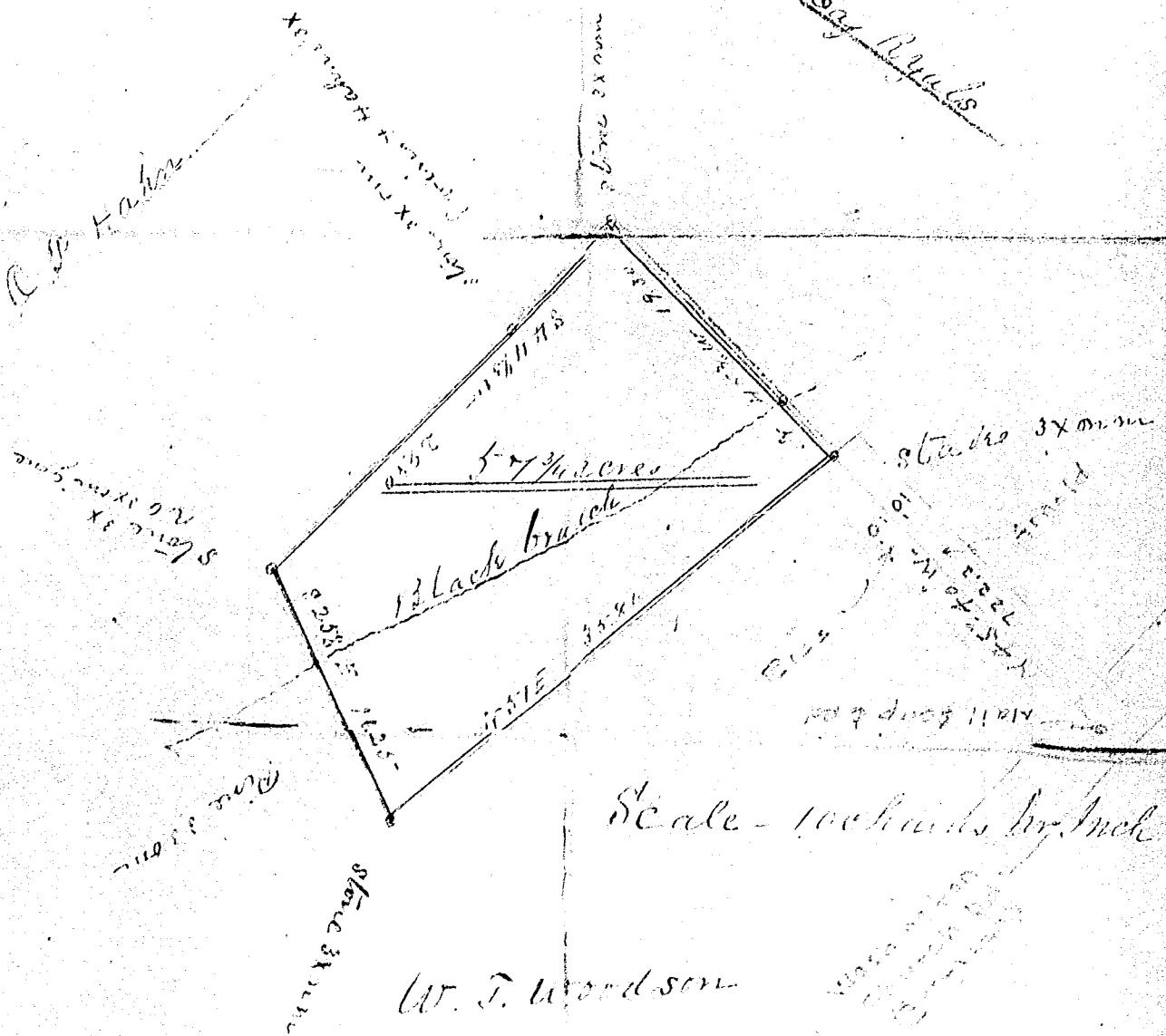
AUG 17 1951

18984

W. H. Evans

Moog Ryals

C. P. Hahn



Scale - 10 chains by inch

W. J. Woodson

Tract No. 7 of the Lands belonging to the Estate of W. H. Evans, dec'd was sold to C. P. Hahn and W. J. Woodson, and contained 11.5 acres. The above Plat represents the part cut off for C. P. Hahn and contains 5 7/8 acres.

Resurveyed from plat No. 18984