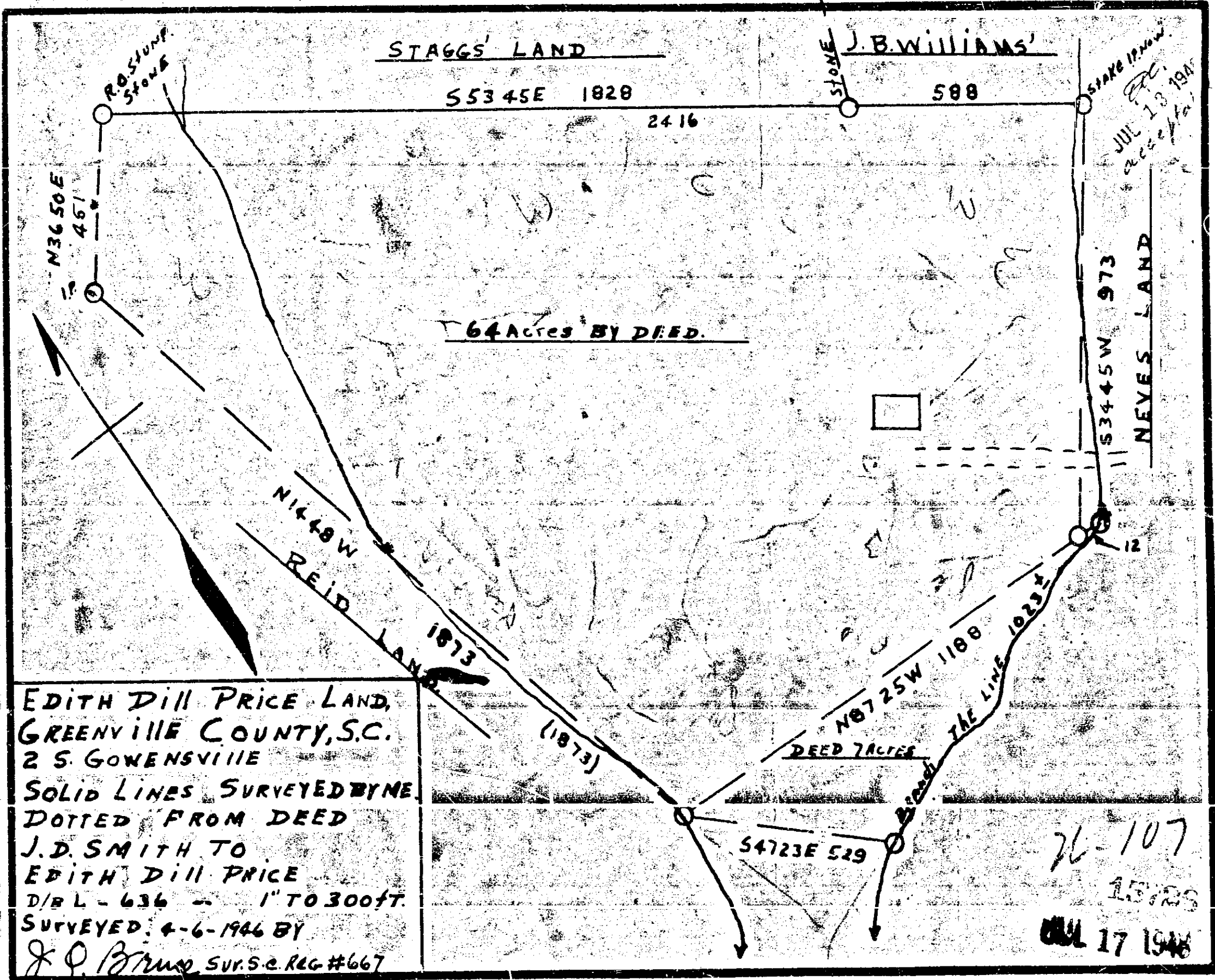


Plat Book-U-Page 107A



EDITH DILL PRICE LAND,
 GREENVILLE COUNTY, S.C.
 2 S. GOWENSVILLE
 SOLID LINES SURVEYED BY ME.
 DOTTED FROM DEED
 J. D. SMITH TO
 EDITH DILL PRICE
 D/B L - 636 - 1" TO 300 FT.
 SURVEYED: 4-6-1946 BY
 J. P. BRUND, SUR. S.C. REG #667

Application 135301
 Edith Dill Price

26-107
 15728
 JUL 17 1946

15-726
 And Recorded in Vol. 26 Page 107
 Register Means Conveyance (Greenville County, S.C.)
 JUL 17 1946

135301