

81710

Glynn Clayton

Part of Tract from

Sam Hardin

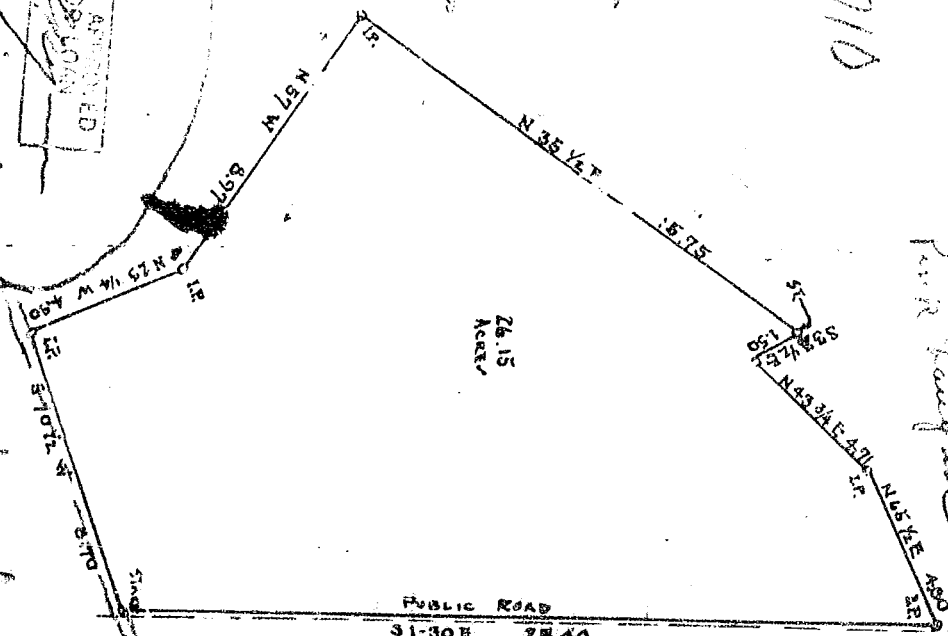
PLANT ASSIGNED  
FOR LUMBER

Map of Lot 2-277  
Bertha Russell

NOV 9 1928

SCALE 1" = 5 CHAINS  
DRAWN FROM DEED

Handwritten signature/initials



PUBLIC ROAD  
31-30R 2844