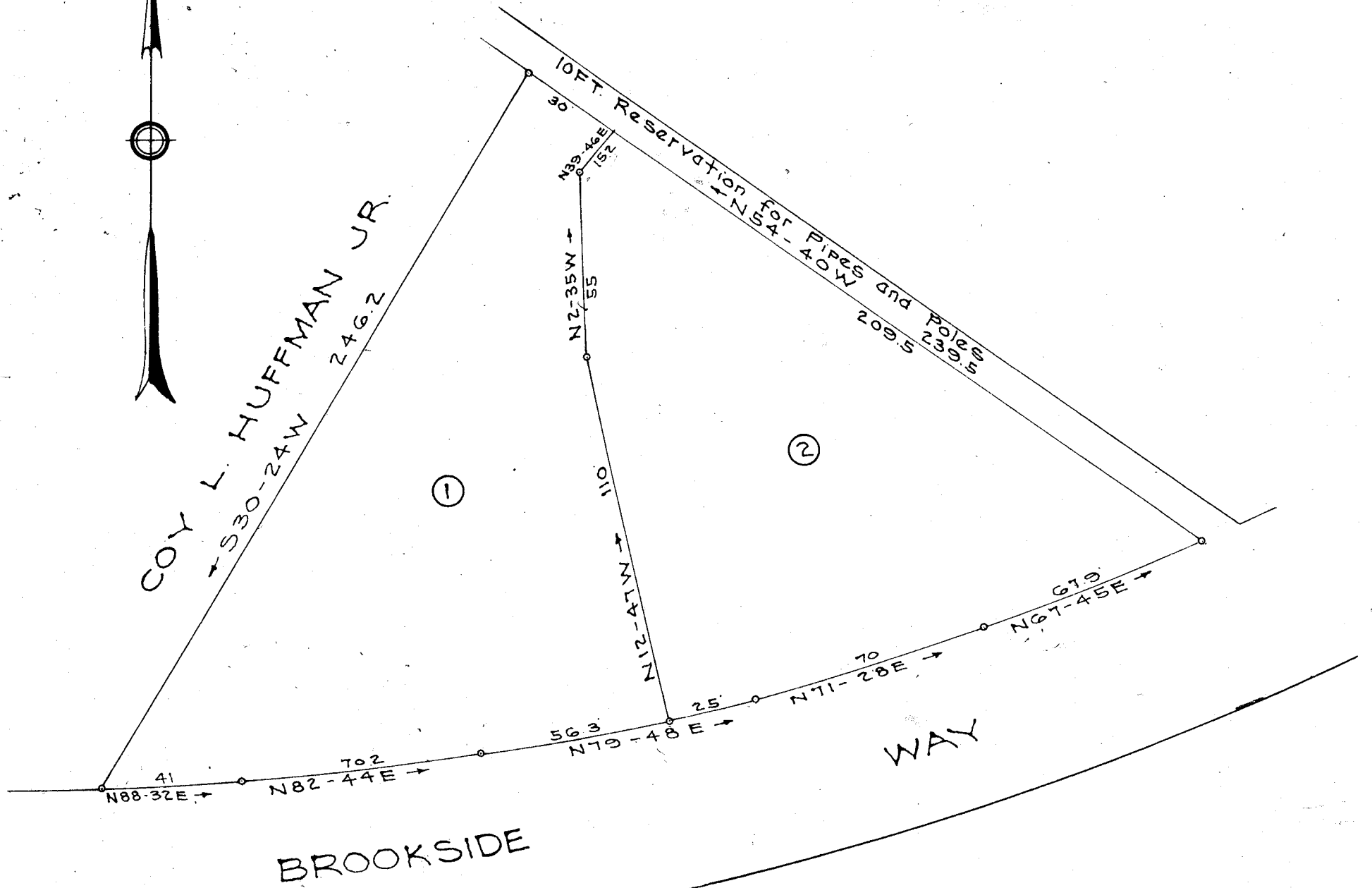


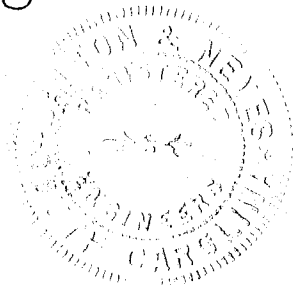
Lots 56-57-58-59-60-61-62-63- and
Part of Lots 64-65-66-67
Marshall Forest



PROPERTY OF
J. LOUIS COWARD CONST. CO. INC.
AND
M. G. PROFFITT
GREENVILLE S. C.
Scale 1"=40' May 1950

11602
MAY 11 1950

DALTON & NEVES



256-A Iron Pins at all Corners.

#11602 Filed This 11 day of May 1950
And Recorded in Vol. 7 Page 181 at M.
Celia Samson
Register Mesrie Conveyance Greenville County, S. C.