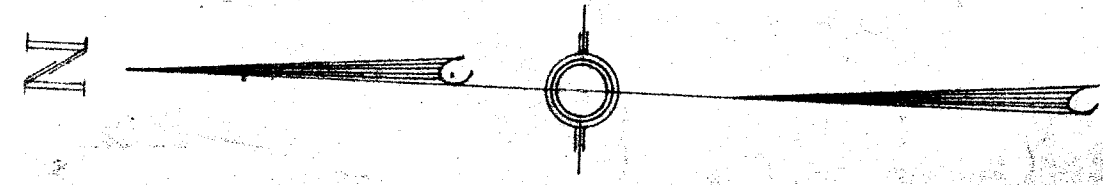
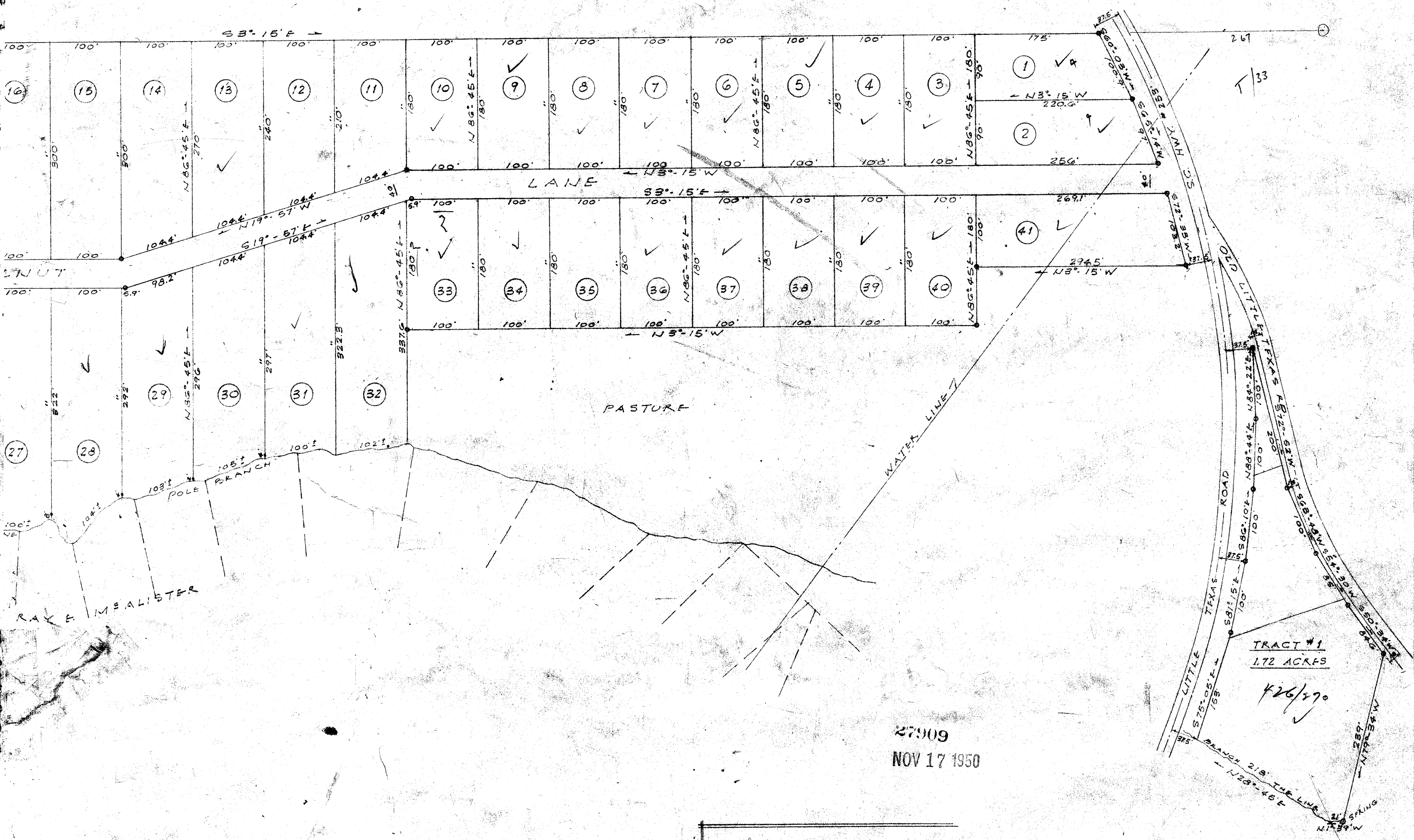


Sec T/33

63



FILED
GREENVILLE CO. S. C.
NOV 17 11 26 AM 1950
OLLIE FARNSWORTH
R. M. C.



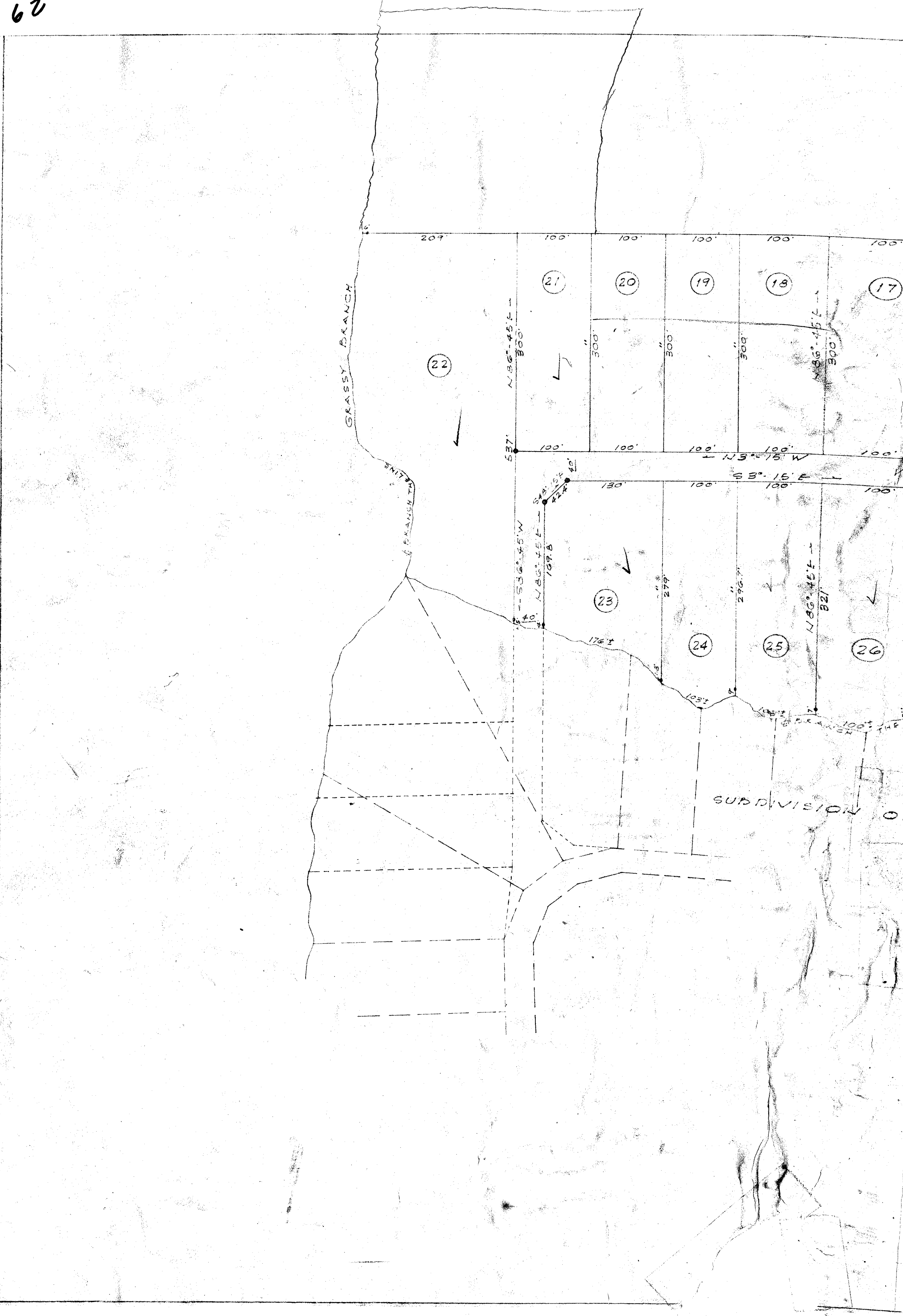
27909
NOV 17 1950

A SUBDIVISION FOR-
LEE ROY STYLES
TRAVELLERS REST, S.C.
PICKELL & PICKELL-ENGINEERS
GREENVILLE, S.C.
SCALE: 1"=100'
DATE: SEPT., 1950

#27909 Filed This 17 day of Nov 1950
And Recorded in Vol. 63 at M.
Ollie Farnsworth
Register Mesne Conveyance Greenville County, S.C.

NOTE:
OFFSET PINS ALONG BRANCH
INCLUDED IN TOTAL DISTANCES.
IRON PINS AT ALL CORNERS.

See deeds 259/42 & 44



GRASSY BRANCH

BRANCH TRAIL

SUBDIVISION OF

207

21

20

19

18

17

22

23

24

25

26

N 86° 45' E 300'

N 86° 45' E 300'

S 36° 45' W 107.8'

N 86° 45' E 300'

537'

S 3° 15' E 100'

130'

100'

100'

176'

103'

279'

296.7'

128'

100'

100'

100'

300'

300'

300'

100'

100'

100'

100'

130'

100'

100'

100'

100'

100'

100'

100'

100'

100'

100'

100'

100'

100'

100'

100'

100'

100'

100'

100'

100'

100'

100'

100'

100'

100'

100'

100'

100'

100'

100'

100'

100'

100'

100'

100'

100'

100'

100'

100'