

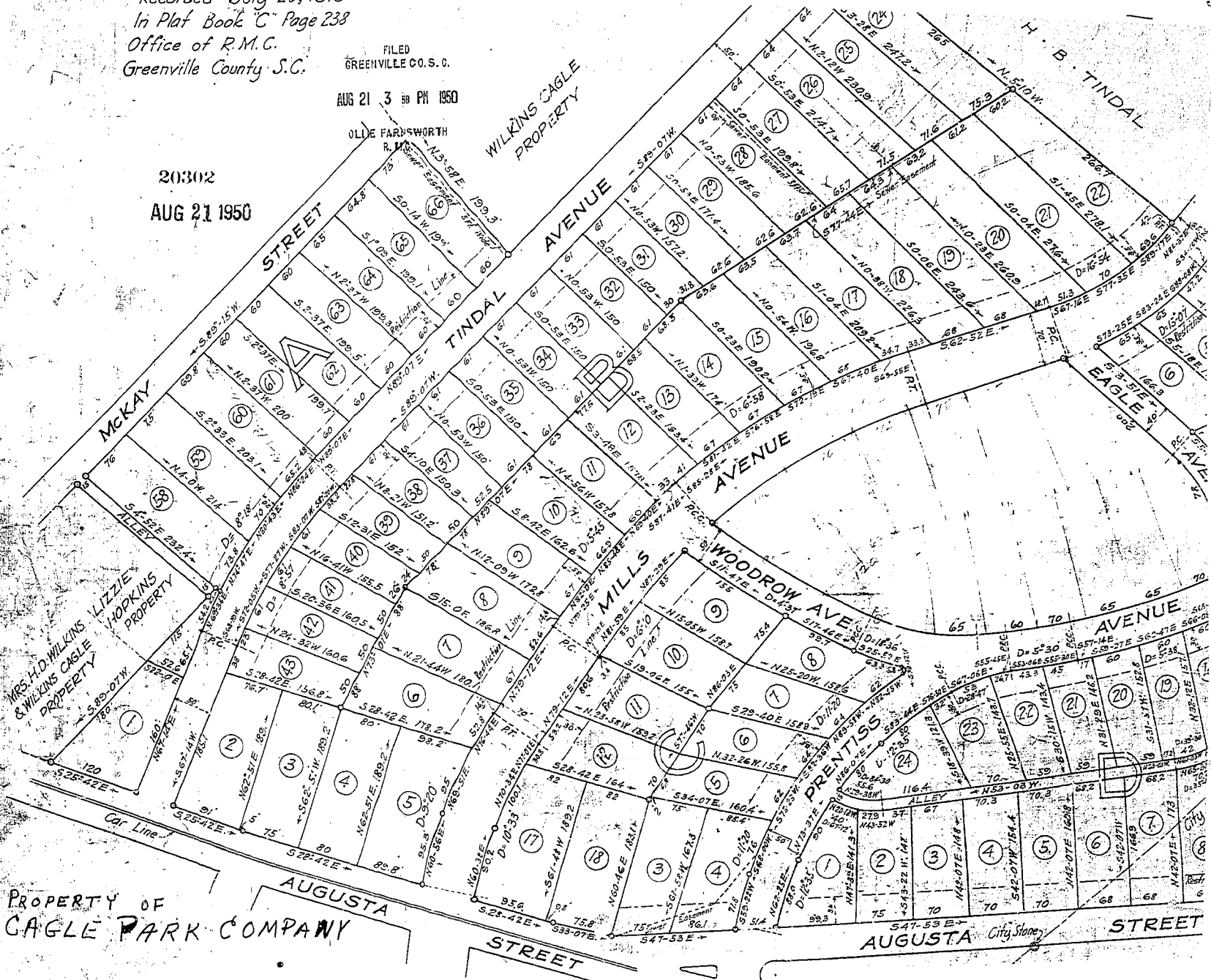
Recorded July 20, 1915
 in Plat Book "C" Page 238
 Office of R.M.C.
 Greenville County S.C.

FILED
 GREENVILLE CO. S. C.

AUG 21 3 39 PM 1950

20302

AUG 21 1950



PROPERTY OF
 CAGLE PARK COMPANY

Notes: Curves and Distances on Curves refer to Chords.
 Iron Pipes at all Corners not otherwise noted.
 Revision of Lots 15 to 31 (inclusive) Block "B" made
 Feb. 1917 by Eliminating Lot 23.
 X Revision of Lots 11 & 12 Block "B" Sept. '48

#20302 Plat Title 21 day of Aug 1950
 and Recorded in Vol. 3 Page 3 at 3:38 P.M.
 R. E. Dalton
 Register Meane Conveyance Greenville County, S.C.

R. E. DALTON, ENGINEER
 GREENVILLE, S. C.

Plat Books 12 & 13 & 27