

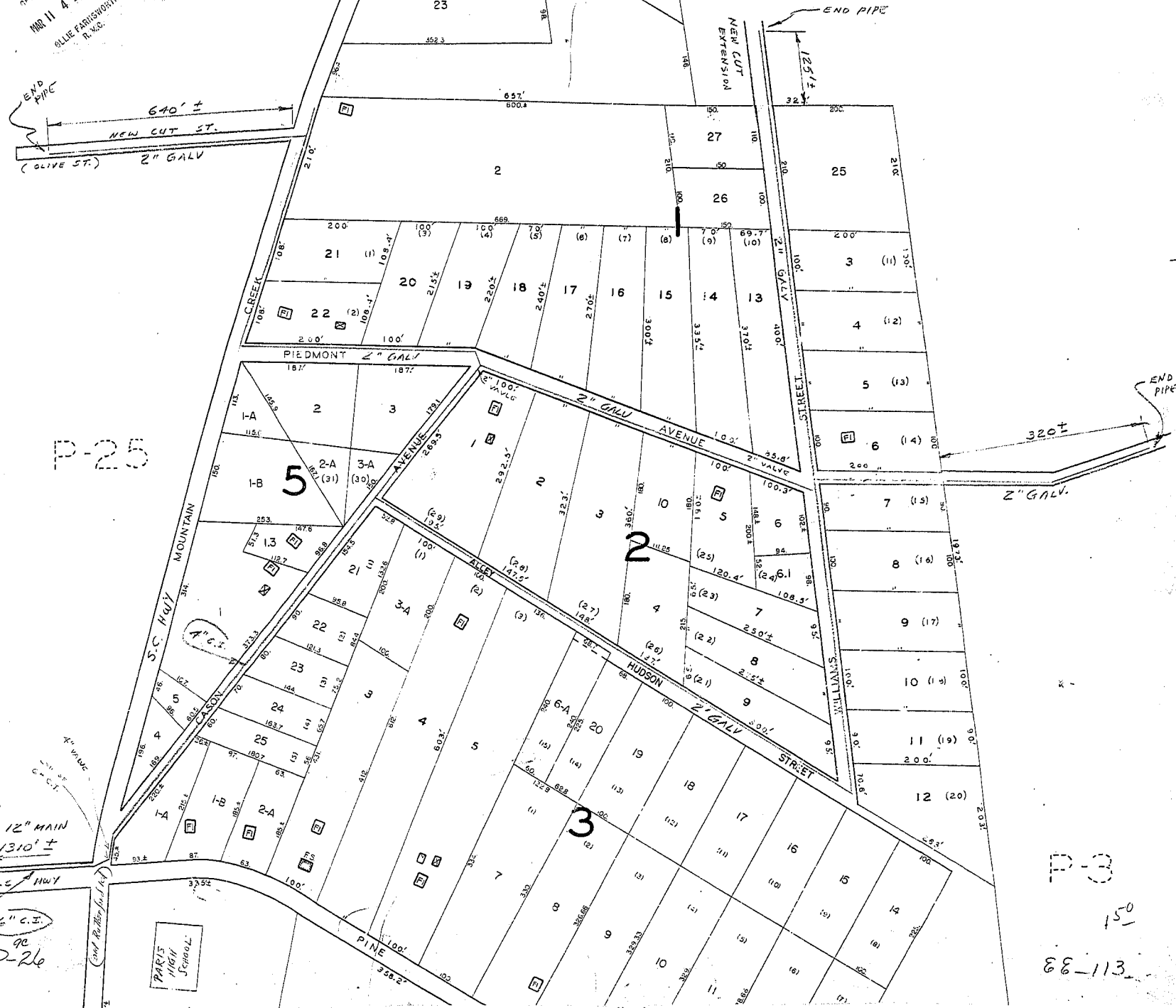
MAR 11 1955
6457

PIEDMONT PARK WATER CO.

ALLY
GREENVILLE CO. S.C.
MAR 11 4 49 PM 1955
ELLIE FARRISWORTH
R. W.C.

P-24

END PIPE
640' ±
NEW CUT ST.
(OLIVE ST.)
2" GALV



P-25

TO 12" MAIN
1310' ±

6" C.I.
90
P-26

PARIS HIGH SCHOOL

P-3

150
88-113