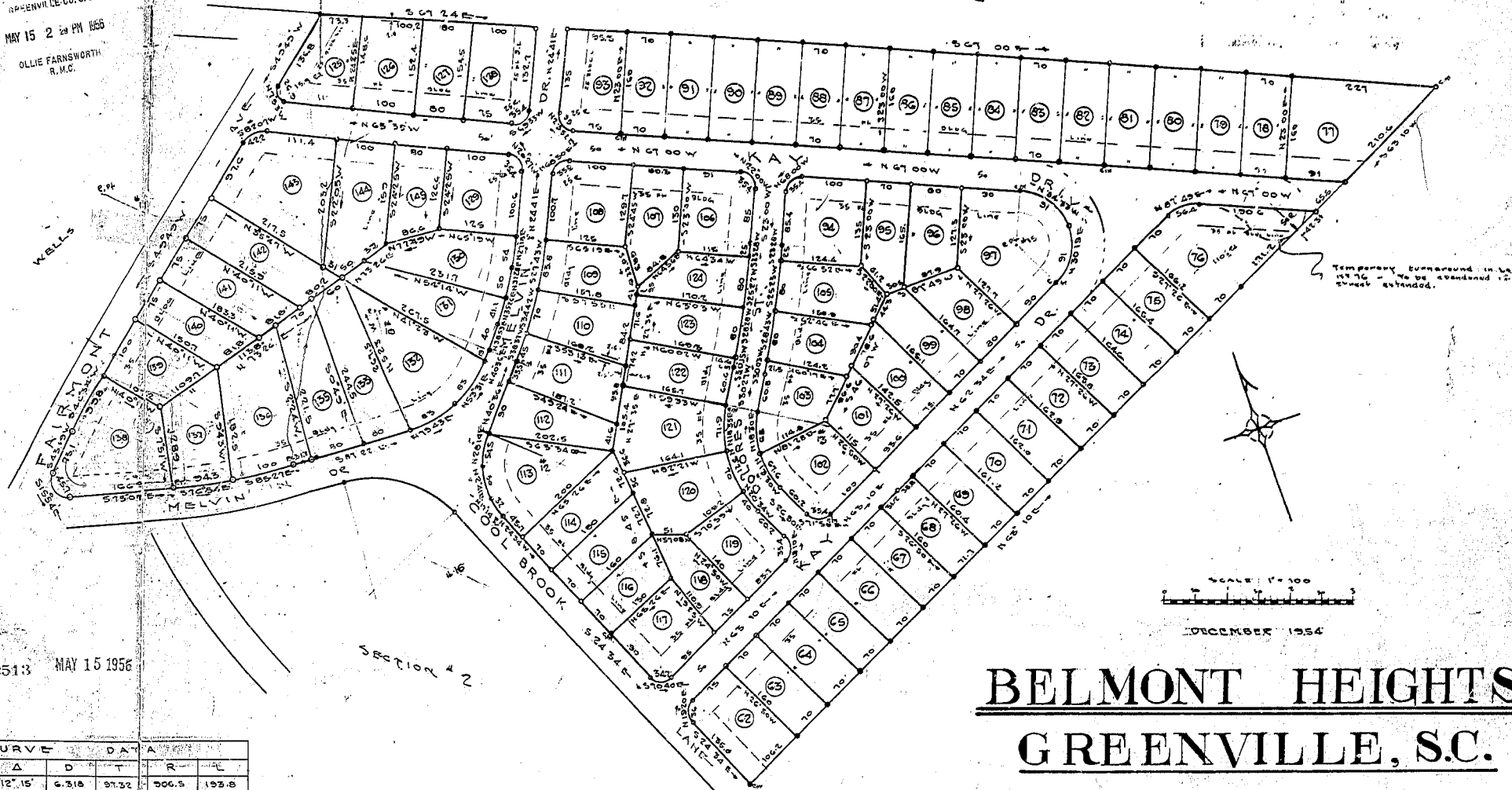


FILED
GREENVILLE CO. S.C.
MAY 15 2 34 PM 1956
OLLIE FARNWORTH
R.M.C.

SEWER COMMISSION



Temporary turnaround in Lot 147 to be abandoned if street extended.

SCALE 1" = 100'
DECEMBER 1954

BELMONT HEIGHTS GREENVILLE, S.C.

SECTION TWO
DEVELOPED BY
LESLIE & SHAW
INC
FIRST FEDERAL SAVINGS & LOAN BLDG.
GREENVILLE, S.C.

FINAL PLAN APPROVED
GREENVILLE CITY PLANNING & ZONING COMMISSION
DATE 12-15-54 BY *[Signature]*
SECRETARY CITY COMMISSION

DATE OF ORIGINAL REVISION

LOTS 125 THROUGH 145 REVISED AS SHOWN ON THIS PLAT NOV. 6, 1954

C. C. JONES
ENGINEER
GREENVILLE, S.C.

No.	CURVE	DATA			R	L
		A	D	T		
8	I	12° 15'	6.318	97.32	206.5	123.8
9	"	"	1.388	102.48	206.5	204.6
10	I	51° 50'	30.955	90	185.22	107.65
11	I	15° 50'	8.568	96.04	248.9	184.9
"	"	"	7.348	100	718.3	198.7
12	"	45° 10'	45.775	80	125.2	142.4
13	"	57° 17'	31.293	100	183.1	185.05
"	I	"	45.049	76.7	153.1	135.06
14	I	7° 35'	3.797	100	1509.4	190.7
"	"	"	3.675	103.31	1559.4	206.3
15	I	159° 30'	61.406	180.7	85	207.0
16	I	67° 5'	62.97	90	880.55	208.9

NOTE: A 15" Utility or Orange Basement reserved along the line and Green Lot Lines. See Lots 110-111-112. A 12" of Orange Basement reserved on each side of Branch. See Lot 130.

This is a true and correct copy of Belmont Heights plat Original Plat returned in Plat Book 52, Page 99 - Nancy Craig Notary Public

12513...Plat This 15 day of May 1956
And Recorded in Vol. EE, Page 181 at 11:11 AM