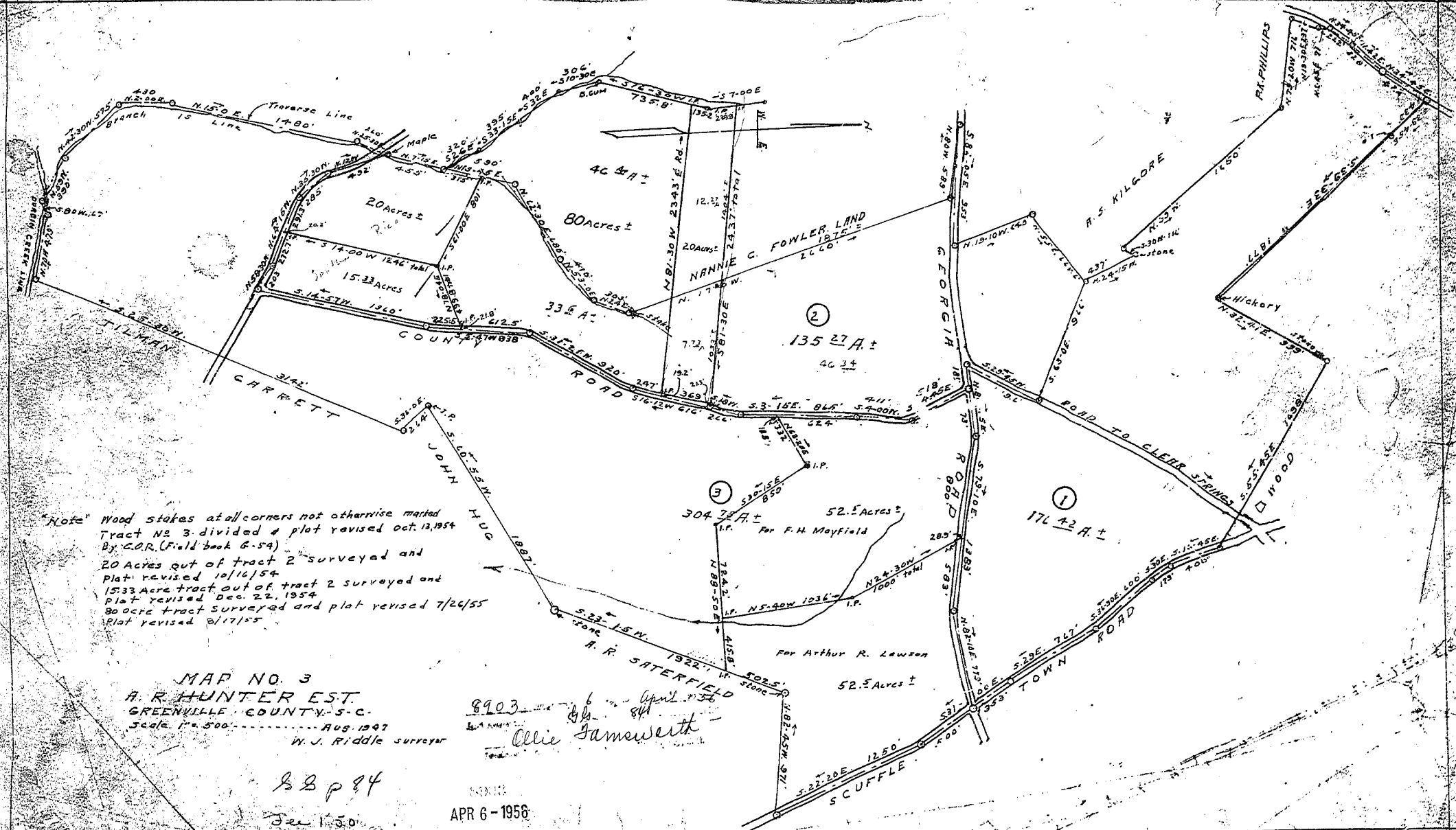


Plat Book-GG-Page 84

42-11



"Note" Wood stakes at all corners not otherwise marked
 Tract No 3 divided & plot revised Oct. 13, 1954
 By C.O.R. (Field book G-59)
 20 Acres out of tract 2 surveyed and
 Plat revised 10/16/54
 15.33 Acre tract out of tract 2 surveyed and
 Plat revised Dec. 22, 1954
 80 acre tract surveyed and plat revised 7/24/55
 Plat revised 8/17/55

MAP NO. 3
 A. R. HUNTER EST.
 GREENVILLE COUNTY, S.C.
 Scale 1" = 500' AUG. 1947
 W. J. Riddle surveyor

8903
 6 April 1956
 Olvie Samwerth

BBP 84
 See 150

APR 6 - 1956

8909 - Plat - 6 April 1956
 Recorded Vol 401 - 84
 Olvie Samwerth
 Greenville County, S.C.