

SPACE W: 50 FT

BLOCK "C"  
FUTURE LOTS

DUKE POWER  
68 R/W

RAINBOW STREET

RAINBOW STREET

BLOCK "B"

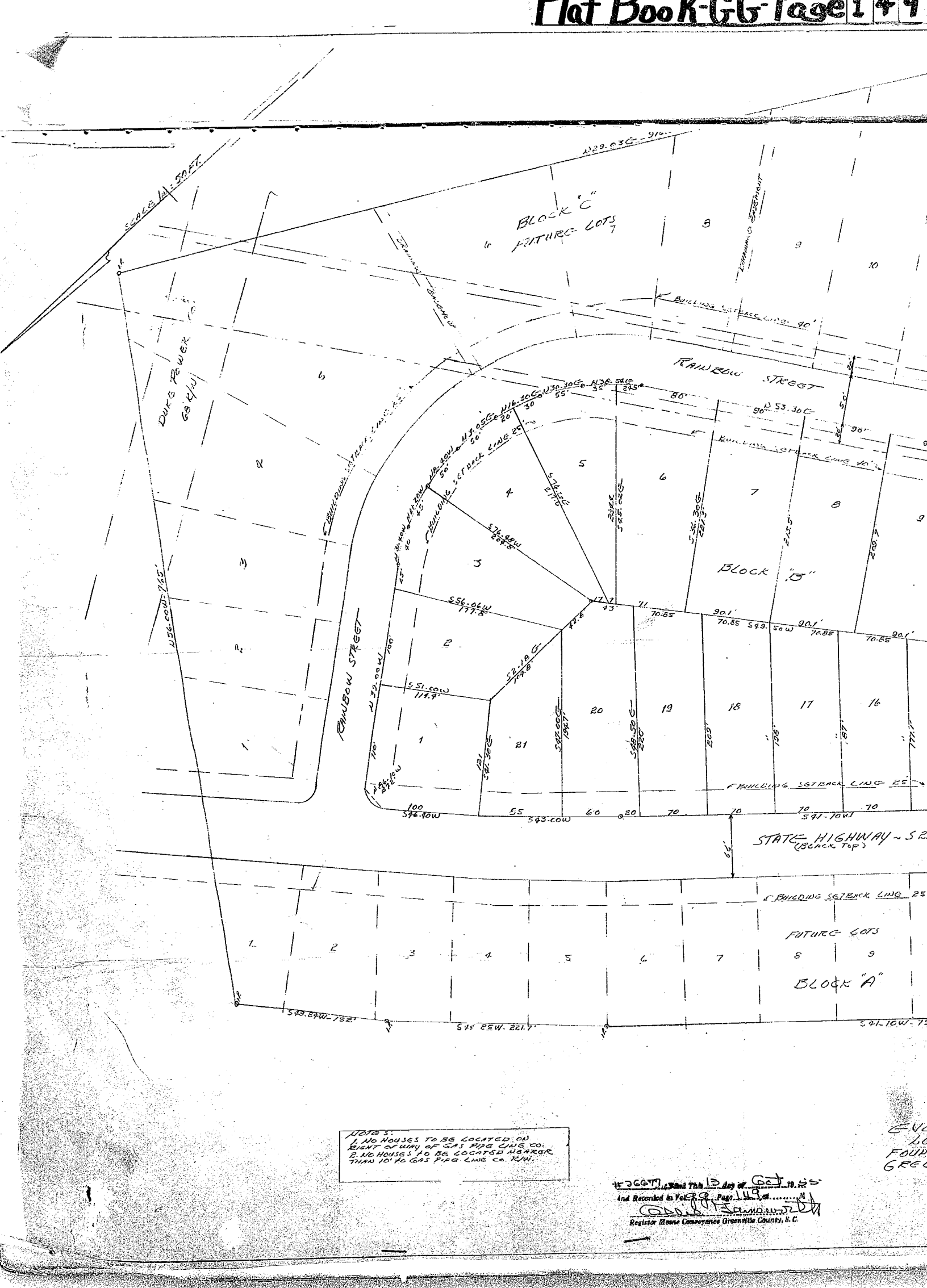
STATE HIGHWAY - S.R.  
(Black Top)

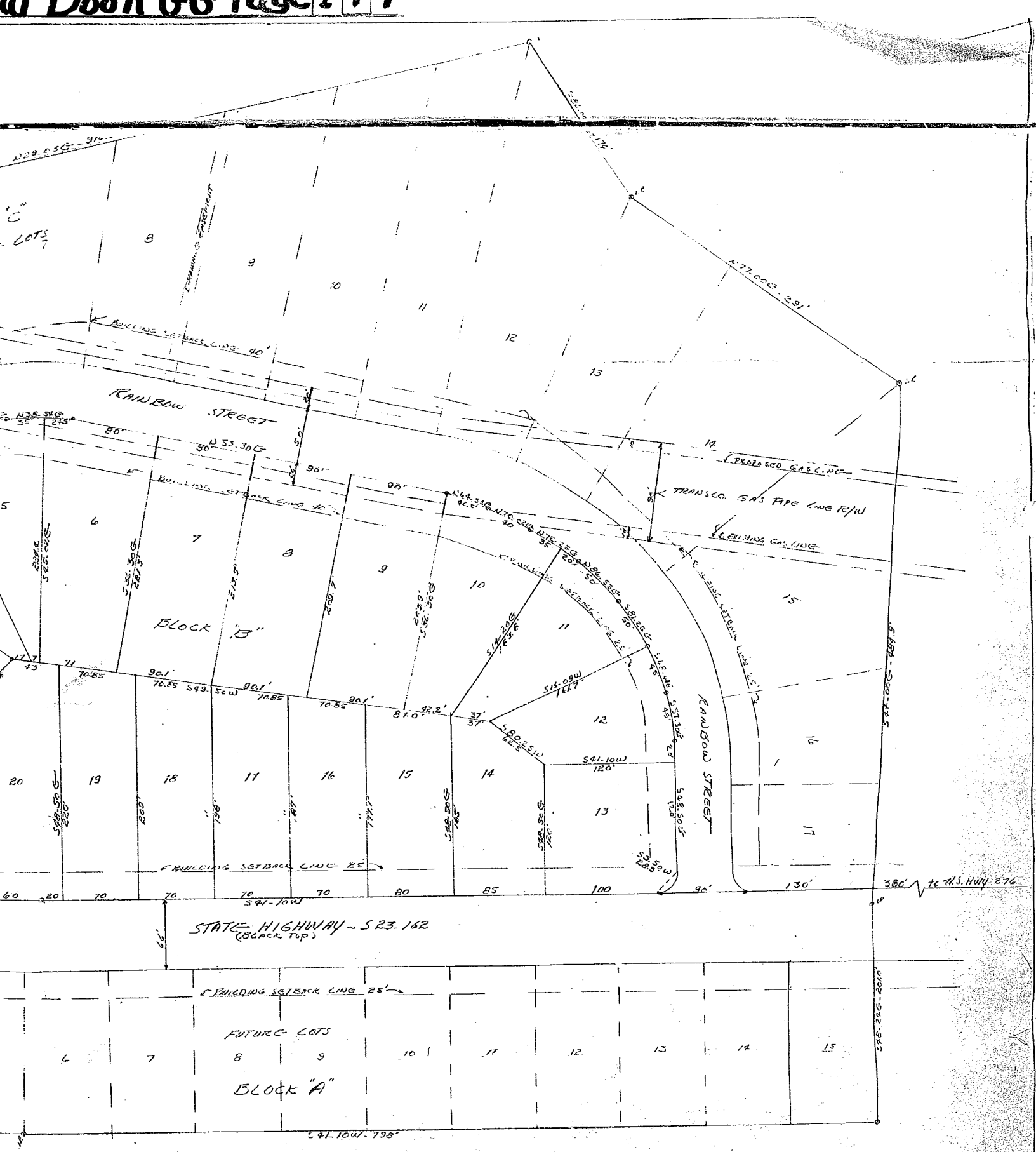
FUTURE LOTS  
BLOCK "A"

NOTE:  
1. NO HOUSES TO BE LOCATED ON  
RIGHT OF WAY OF GAS PIPE LINE CO.  
2. NO HOUSES TO BE LOCATED NEARER  
THAN 10' TO GAS PIPE LINE CO. R/W.

#3607, Vol 13, Page 147  
And Recorded in Vol 13, Page 147  
C. J. ...  
Registrar of Deeds, Greenville County, S. C.

E.V.  
L.C.  
FOUR  
GREEN





STATE HIGHWAY ~ S.R. 23. 162  
(BACK TOP)

FUTURE LOTS  
BLOCK "A"

EVERGREEN PARK ~ BLOCK "B"  
LOCATED NEAR  
FOUNTAIN INN, SOUTH CAROLINA  
GREENVILLE COUNTY ~ SEPT. 9, 1955

I hereby certify that this  
is a TRUE and CORRECT copy  
of Plat as Recorded  
in Plat Book 149  
at page 149

W. C. Starnum  
R.M.C. Greenville County, S.C.

OCT 13 1955

26677

99-149

36677... and Recorded in Vol. 39, Page 149  
Register of Deeds Greenville County, S.C.

DRAWN & SURVEYED BY  
LEWIS C. GODSEY REG. C.S. No. 1442  
LAURIGUS, S.C.

IRON PINS AT ALL CORNERS

GREENVILLE COUNTY  
OCT 15 1955  
REGISTERED