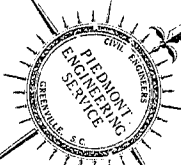


152

GREENVILLE CO. S.C.



# PLAT OF KNOLLWOOD HEIGHTS

NEAR MAULDIN, S.C.

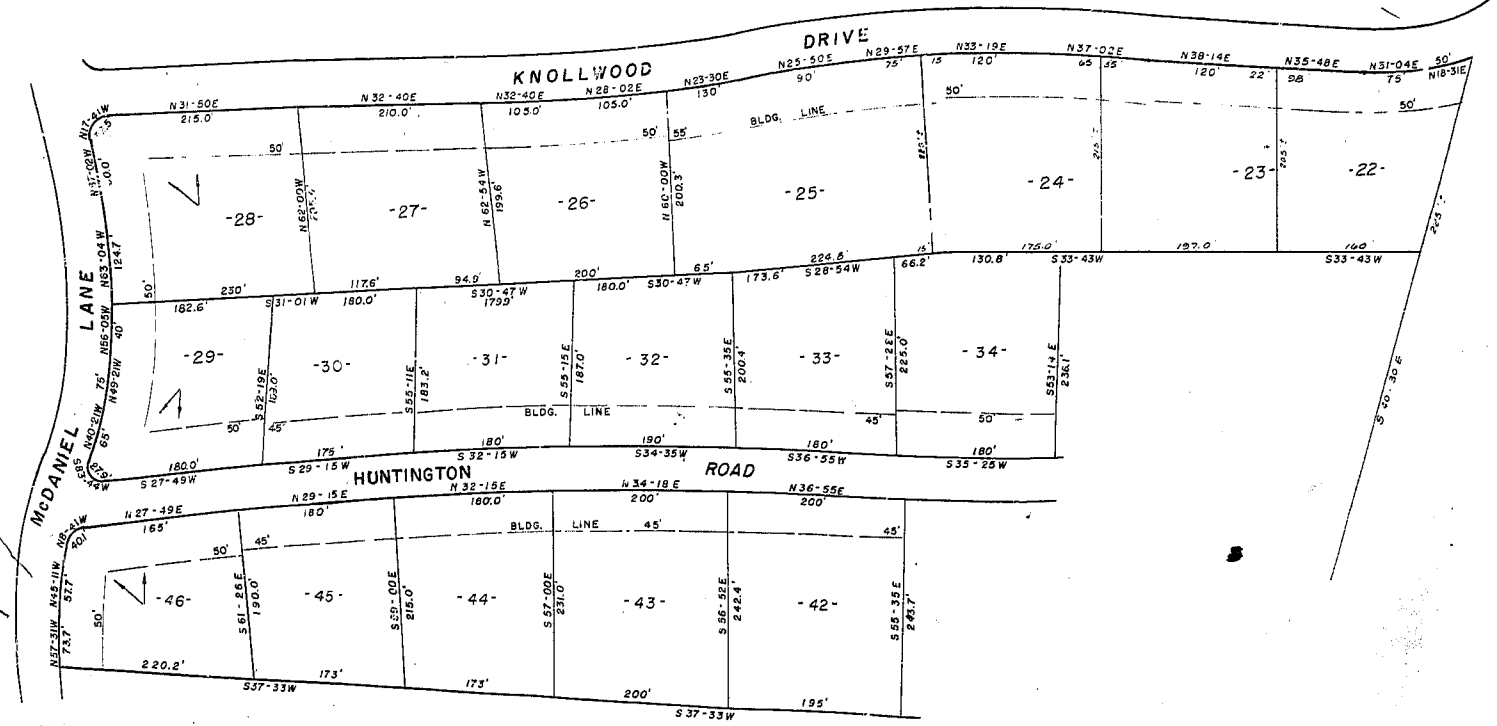
SCALE 1" = 100'

Oct. 1958  
Rev. Jan. 1963

*Approved 2-5-63  
Eleanor H. Bishop*

19774 Filed This 5<sup>th</sup> day of  
Feb. 1963 in Vol. 182  
Register Merce Courthouse Greenville County, S.C.

NOTE-  
THERE IS A 5' UTILITY & DRAINAGE  
EASEMENT ALONG ALL SIDE & REAR LOT LINES.  
DIRECTION LOT FACES



FILED  
GREENVILLE CO. S.C.  
FEB 5 3 31 PM 1963  
D.L. F. TAYLOR  
R.K.C.

152  
150  
19774  
FEB 5 1963