

AUG 13 1963

FILED  
GREENVILLE CO. S. C.

AUG 13 1 41 PM 1963

# PROPERTY OF CELANESE CORPORATION OF AMERICA.

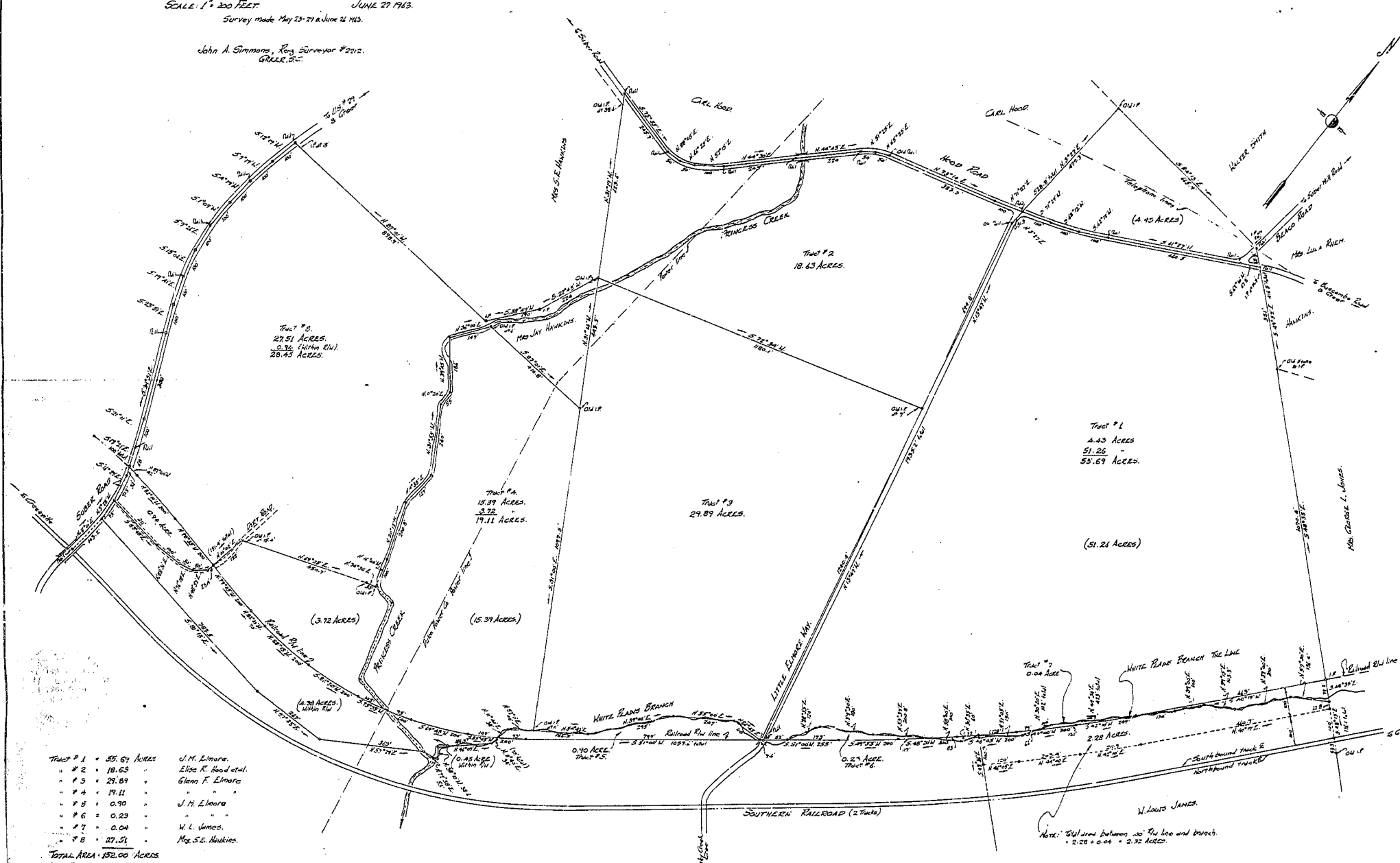
Located approx 2 miles South West of Greer.  
CHICK SPRINGS TOWNSHIP GREENVILLE COUNTY,  
SOUTH CAROLINA.

SCALE: 1" = 200 FEET JUNE 27 1963.  
Survey made May 23-27 & June 24 1963.

John A. Simmons, Reg. Surveyor #2012.  
GREENVILLE, S.C.

# BAD COPY

Notes:  
Information for map taken from following plats:-  
Property of John Elmore by J. E. Simmons, Aug. 9, 1959  
" " J. B. Ponderbark & J. L. Adams by J. E. Simmons, Sept. 20, 1959  
" " Thomas Stone Estate by W. S. Anderson, Sept. 20, 1959  
" " Homer Elmore by J. E. Simmons, Oct. 2, 1959  
" " Mattie A. Adams Estate by J. E. Simmons, May 21, 1959  
" " J. E. Simmons, May 21, 1959  
Also from data obtained from Southern Railroad planning or  
Railroad Map of this location.



- |           |   |             |                      |
|-----------|---|-------------|----------------------|
| Tract # 1 | = | 35.64 ACRES | J. M. Elmore.        |
| " # 2     | = | 18.63 "     | Elice R. Hood et al. |
| " # 3     | = | 29.89 "     | Glenn F. Elmore      |
| " # 4     | = | 19.11 "     | "                    |
| " # 5     | = | 0.90 "      | J. M. Elmore         |
| " # 6     | = | 0.23 "      | "                    |
| " # 7     | = | 0.04 "      | W. L. James.         |
| " # 8     | = | 27.51 "     | Mrs. S.E. Hawkins.   |

TOTAL AREA: 192.00 ACRES.

Notes: Plat recorded Aug. 2 1963 to show additional information  
in Tracts 4, 7, and 8.

Part in 30° GG-176

4765 FILED TO 13th of Aug. 1963