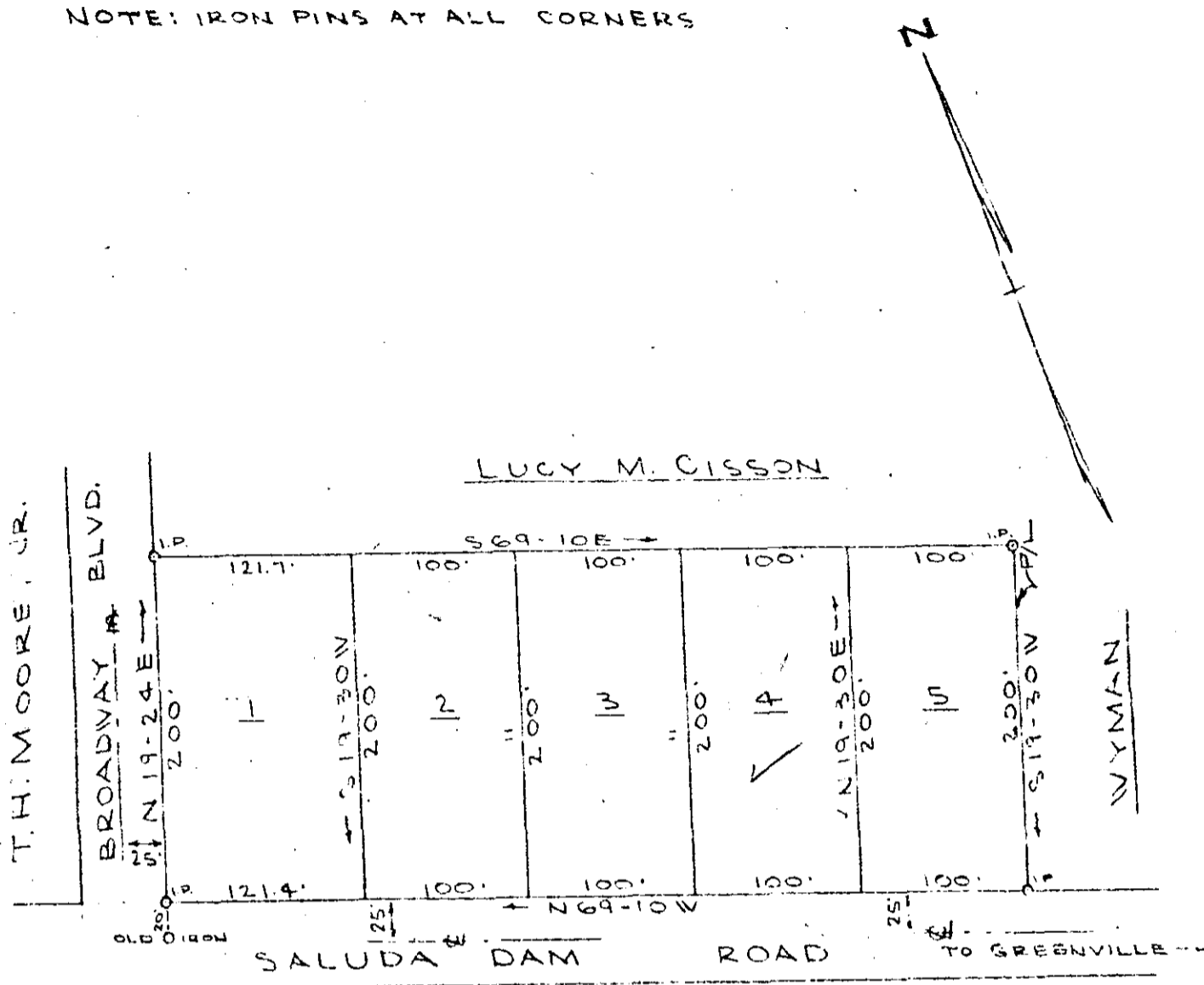


NOTE: IRON PINS AT ALL CORNERS



J.P. EDENS

Subdivision for:

LUCY M. CISSON

Located in Greenville County near the City of Greenville, S. C.

Scale: 1" = 100' Dated: May 9, 1955

Pickell & Pickell, Engineers
Greenville, S. C.

NO NEW STREETS CREATED. PLAT
APPROVED FOR RECORDING. 7-19-56

JUL 20 1956
18500

George A. Rodgers
GEORGE H. RODGERS
DIRECTOR OF PLANNING AND ZONING

FILED
JUL 20 12 56 PM 1956
GREENVILLE CO. S.C.
OLIE FARMSMOUTH
R.W.C.

See 501-22-27

18500 Filed This 20 day of July 19 56
and Recorded in Vol. 46 Page 27 at

Ollie Farmsmouth
Register Mesne Conveyance Greenville County, S. C.