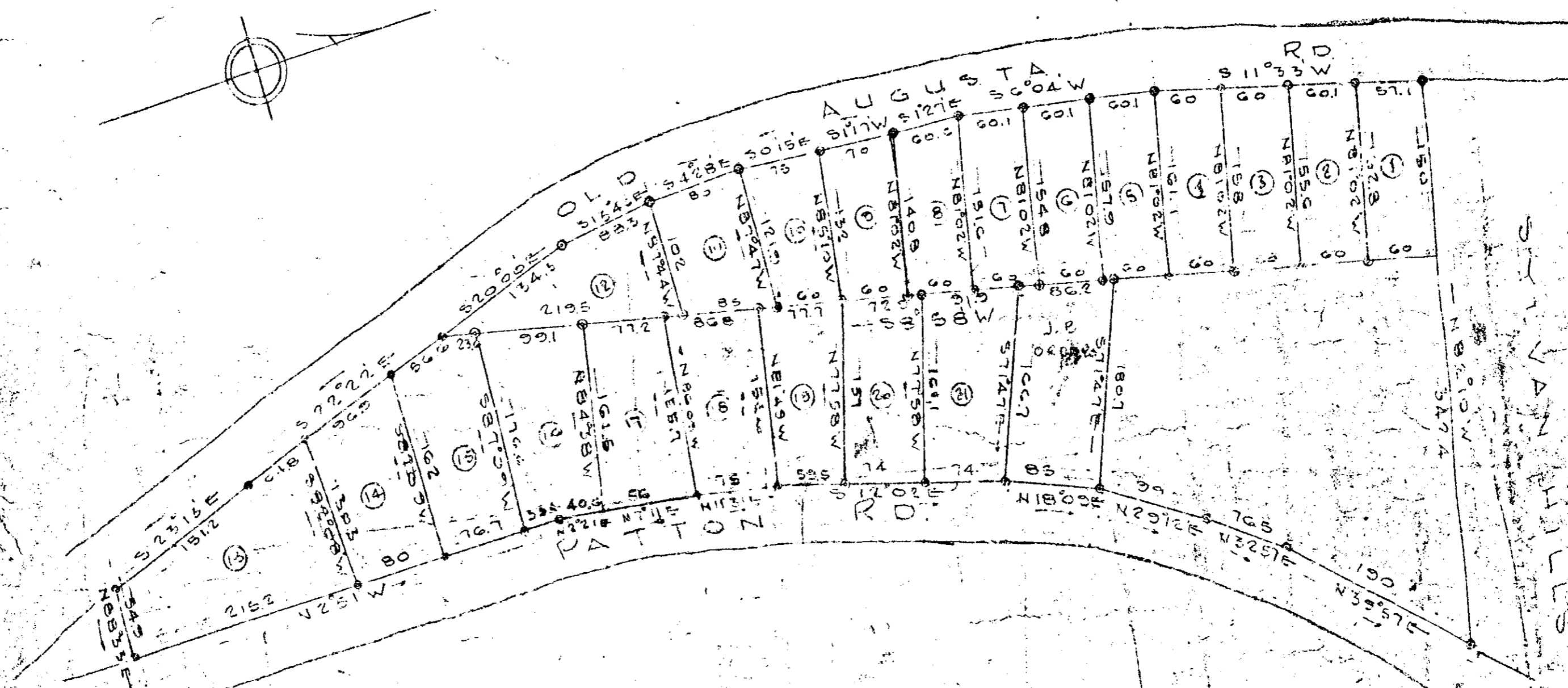


Plat Book LL, Page 57

N.B. 120 P. 73



LOTS ARE ON EXISTING
STREETS AND PLAT DOES
NOT REQUIRE APPROVAL
OF PLANNING AND ZONING
COMMISSION. 8-14-56

PROPERTY OF
J. H. MAULDIN
NEAR
GREENVILLE, S.C.

George H. Rodgers
DIRECTOR OF PLANNING AND ZONING

SCALE: 1"=100' AUG. 11, 1956
Revised notes
Lots - 17-15-17
July 13, 1954

Aug 11, 1956
Office

SURVEY BY R.E. JORDAN

C.C. JOHNS & ASSOCIATES
ENGINEERS
GREENVILLE, S.C.

#20492 Filed This 11 day of Aug. 1956
and Recorded in Vol LL Page 57
Allen Samson
Register Mesne Conveyance Greenville, S.C.