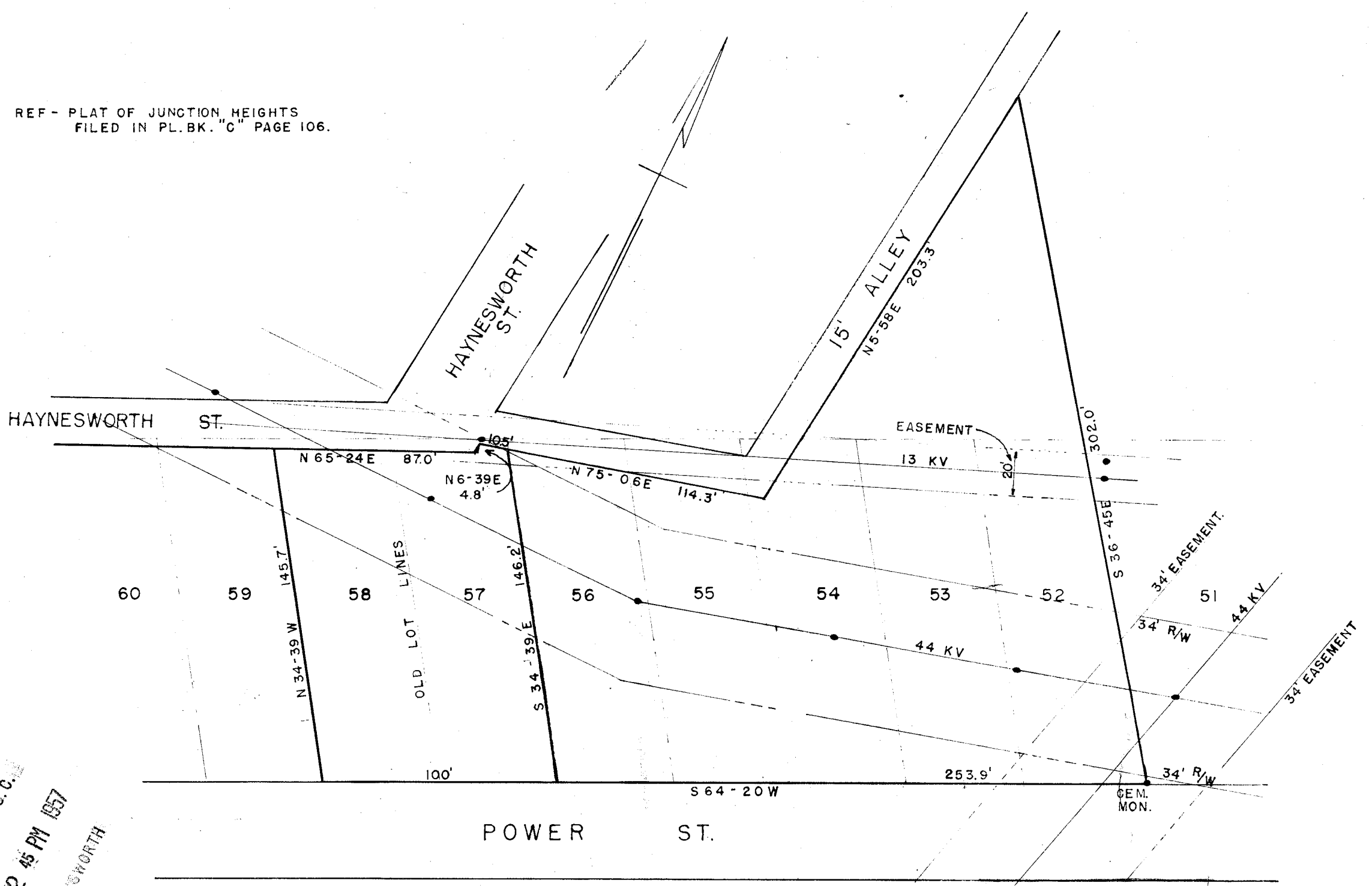


REF - PLAT OF JUNCTION HEIGHTS
FILED IN PL. BK. "C" PAGE 106.



FILED
GREENVILLE CO. S. C.
OCT 2 12 45 PM 1957
OLLIE FANNINGWORTH
R. M. C.

100
Part in
OCT 2 1957
23323

PROPERTY OF
J. P. STEVENS & CO., INC.
MONAGHAN PLANT
NEAR GREENVILLE, S. C.

SCALE 1" = 50'
JULY, 1957
REV: SEPT. 1957

PIEDMONT ENGINEERING SERVICE

77-167

23323 Filed This 2 day of Oct 1957
And Recorded in Vol. 111 Page 167 of 111
Ollie Fanningworth
Register Mesne Conveyance Greenville County, S. C.