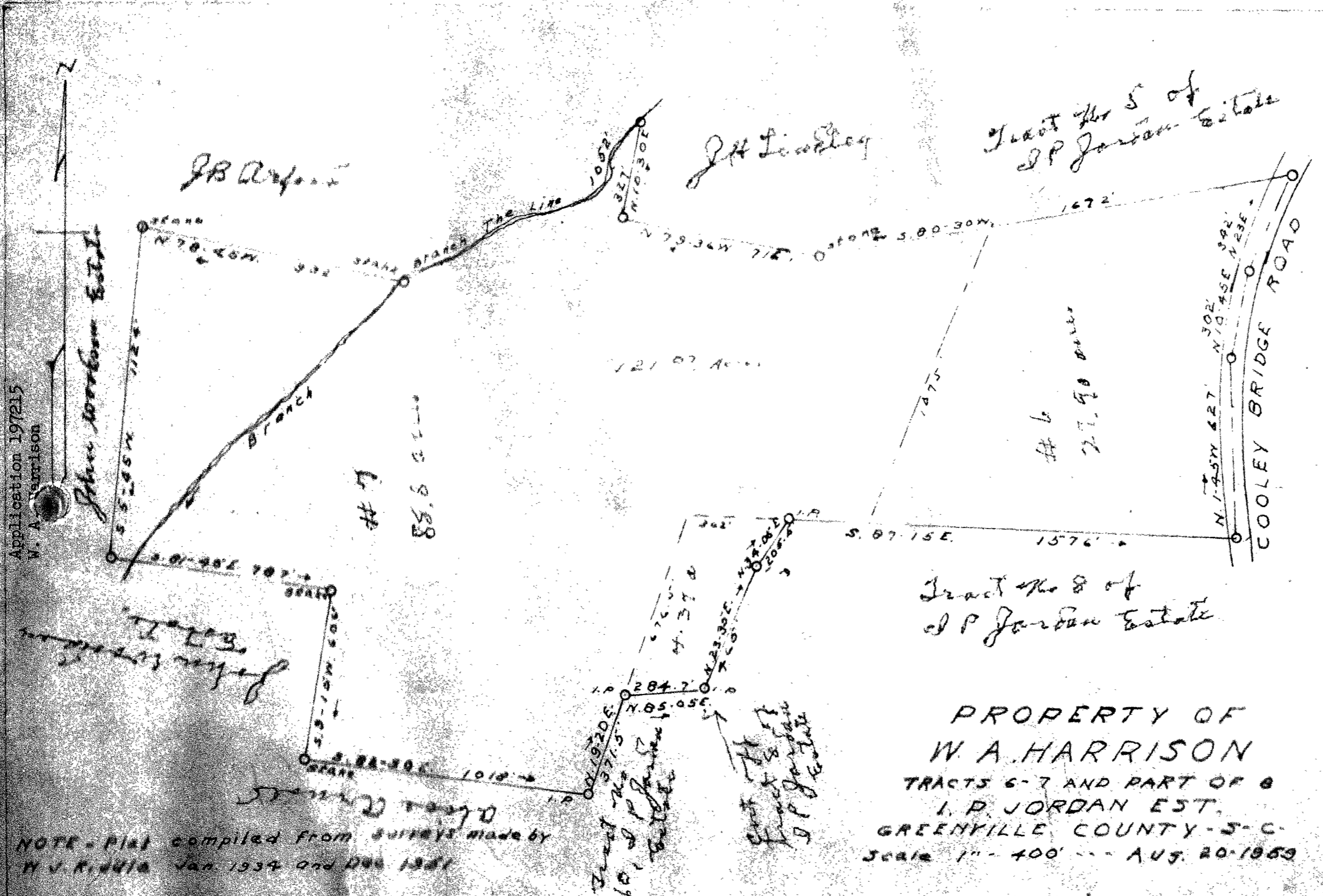


SEP 9 1959



Application 197215  
N. A. Harrison

PROPERTY OF  
W. A. HARRISON  
TRACTS 6-7 AND PART OF 8  
J. P. JORDAN EST.  
GREENVILLE COUNTY - S. C.  
Scale 1" = 400' - - AUG. 20. 1959

See Plot Book  
# - pages 272  
and 273 for  
J.P. Jordan Estate  
Plot

NOTE - Plot compiled from surveys made by  
H. V. Riddle Jan. 1934 and Dec. 1937

W. J. Riddle 1974.5.