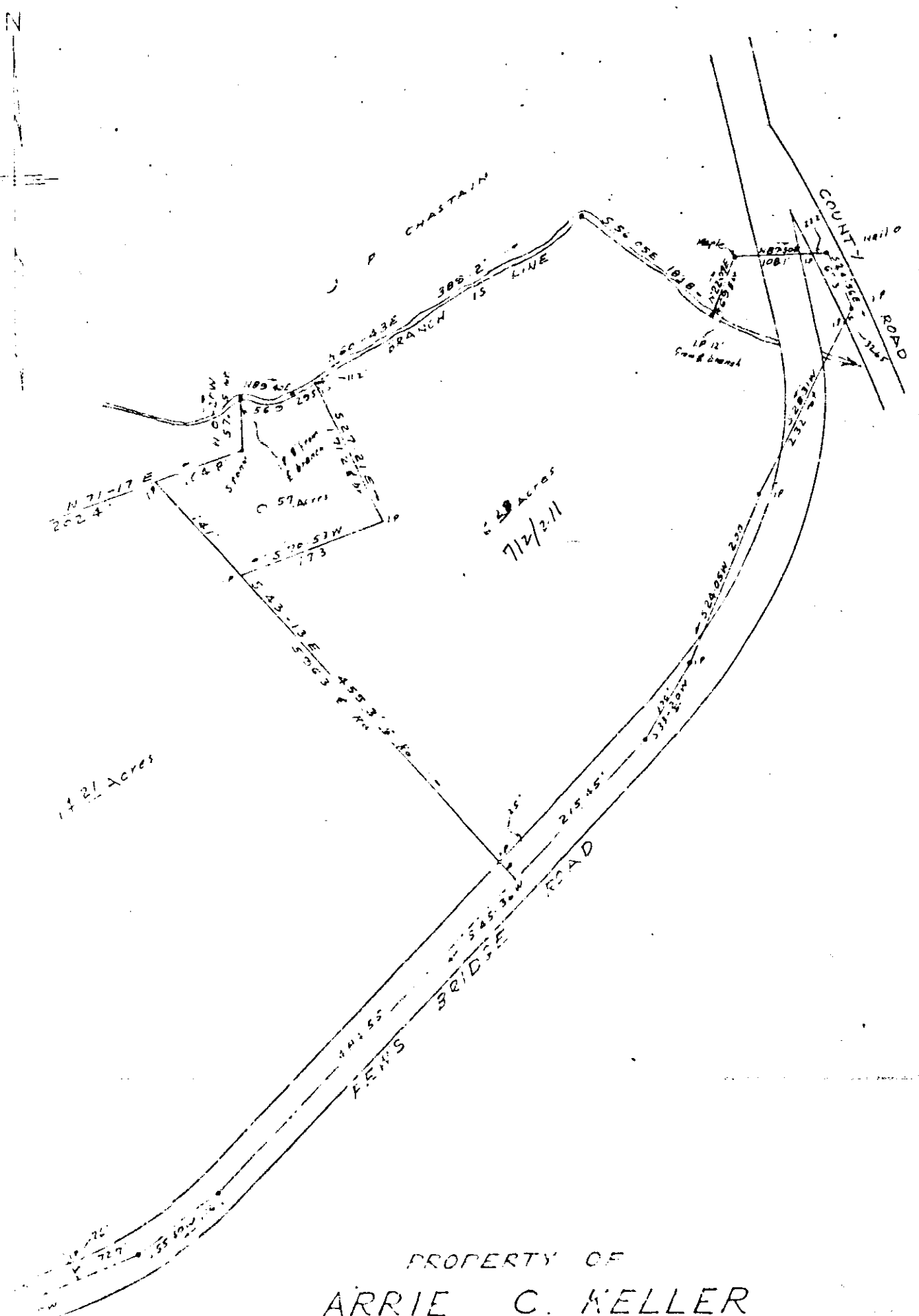


499



17.21 Acres

6.38 Acres
7/2/2-11

PROPERTY OF
ARRIE C. KELLER
 GREENVILLE COUNTY S.C.
 SCALE 1"=100' JUNE, 1962

1. A. C. 57.000 Acre tract surveyed
 and plat revised 12/3/62
 2. Plat revised 3/10/63
 3. Plat revised 5/15/63

Recorded June 12, 1963 at 12:04 P.M. # 32091

See 4.5