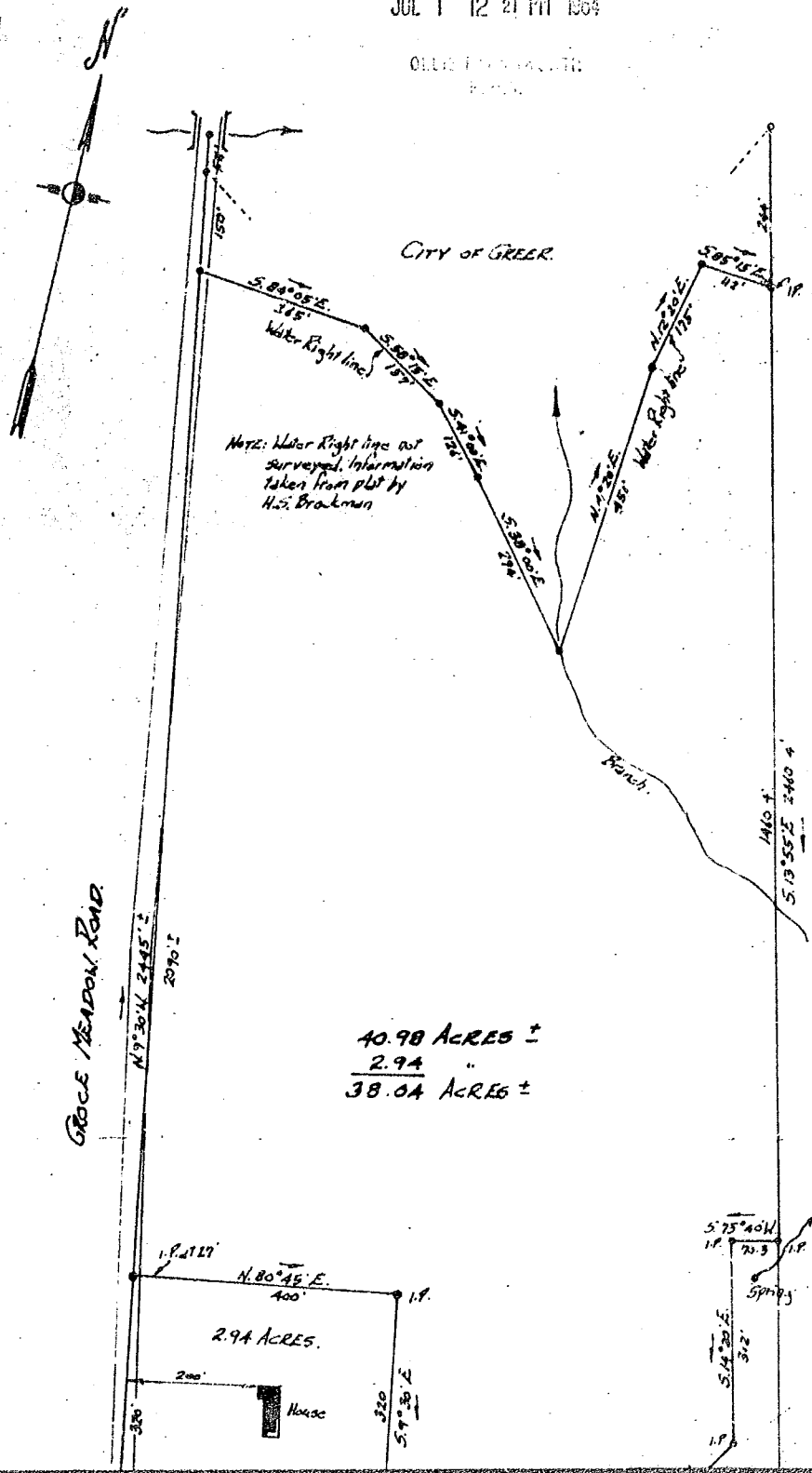


GREENVILLE CO. S. C.

JUL 1 12 21 PM 1934

OLIVER H. HUDSON, JR.  
PLAT



GROVE MEADOW ROAD

40.98 ACRES ±  
2.94 " "  
38.04 ACRES ±

OLIVER H. HUDSON, JR.

House

Spring

N. 80° 45' E. 400'

2.94 ACRES.

S. 75° 40' W. 117'

S. 75° 40' W. 70.3'

S. 75° 40' W. 31.2'

S. 75° 40' W. 117'

S. 75° 40' W. 70.3'

S. 75° 40' W. 31.2'

S. 75° 40' W. 117'

S. 75° 40' W. 70.3'

S. 75° 40' W. 31.2'

S. 75° 40' W. 117'

S. 75° 40' W. 70.3'

S. 75° 40' W. 31.2'

N. 73° 30' W. 2445' ±  
2070' ±

18' ± 117'

320'

200'

320'

320'

320'

320'

320'

1410' ±  
5' 13' 55" E. 2440' ±

117'

70.3'

31.2'

117'

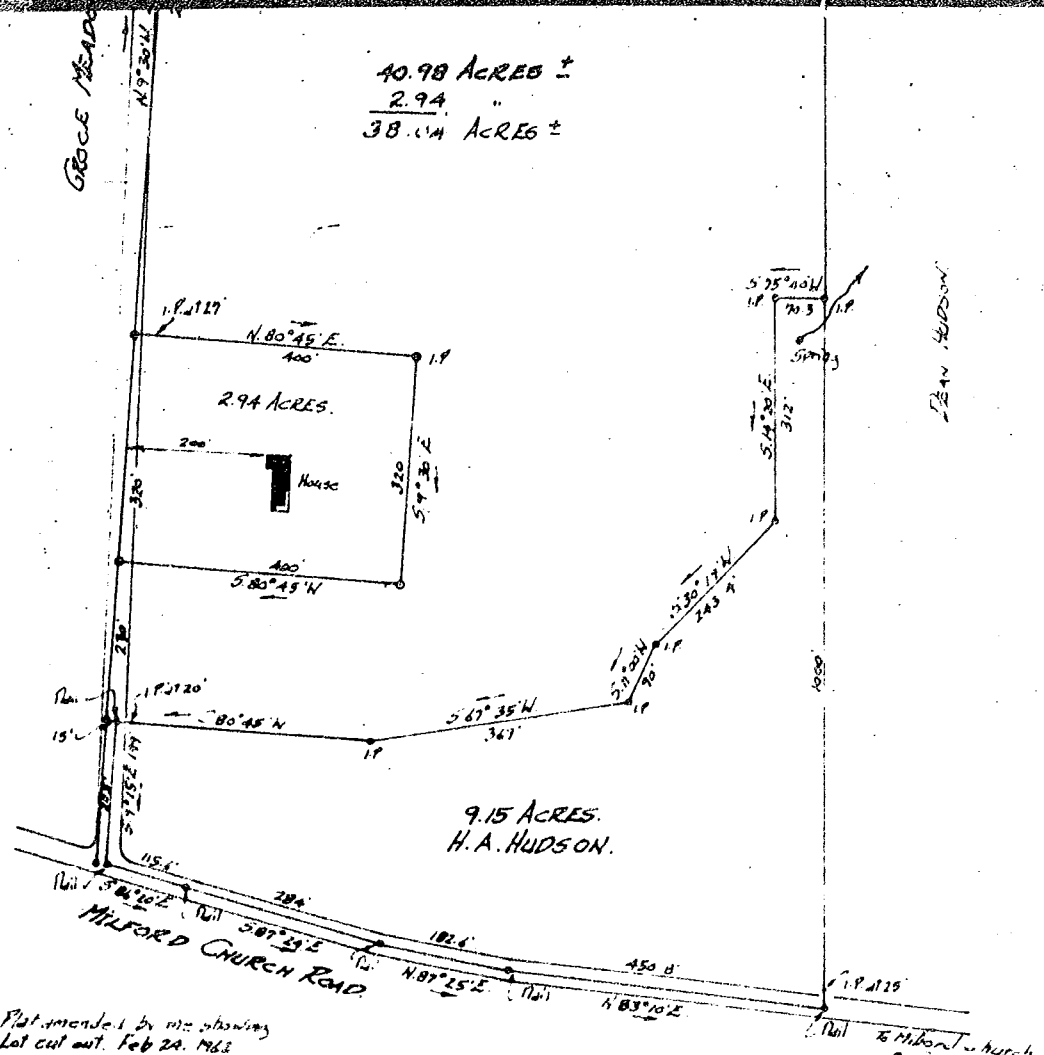
70.3'

31.2'

117'

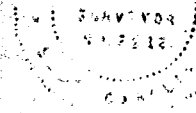
70.3'

31.2'



PROPERTY OF  
**JOHNNY W. & BETTY J. HUMPHRIES.**  
 Located 1/2 mile West of Milford Church  
 ONEAL TOWNSHIP GREENVILLE COUNTY  
 SOUTH CAROLINA.

SCALE: 1" = 200 FEET.      Oct 12 1961    JUL 1 - 1984  
 Survey made Oct 9, 1961.



NOTE: 9.15 Acres tract surveyed, also East property line to I.P. on Water Right line, West property line taken from plat by Gooch & Tyler.

572  
 571  
 John A. Simms - Reg. Surveyor #2212.  
 GREENVILLE, S.C.

Recorded July 1, 1964 at 12:21 P. M. #571