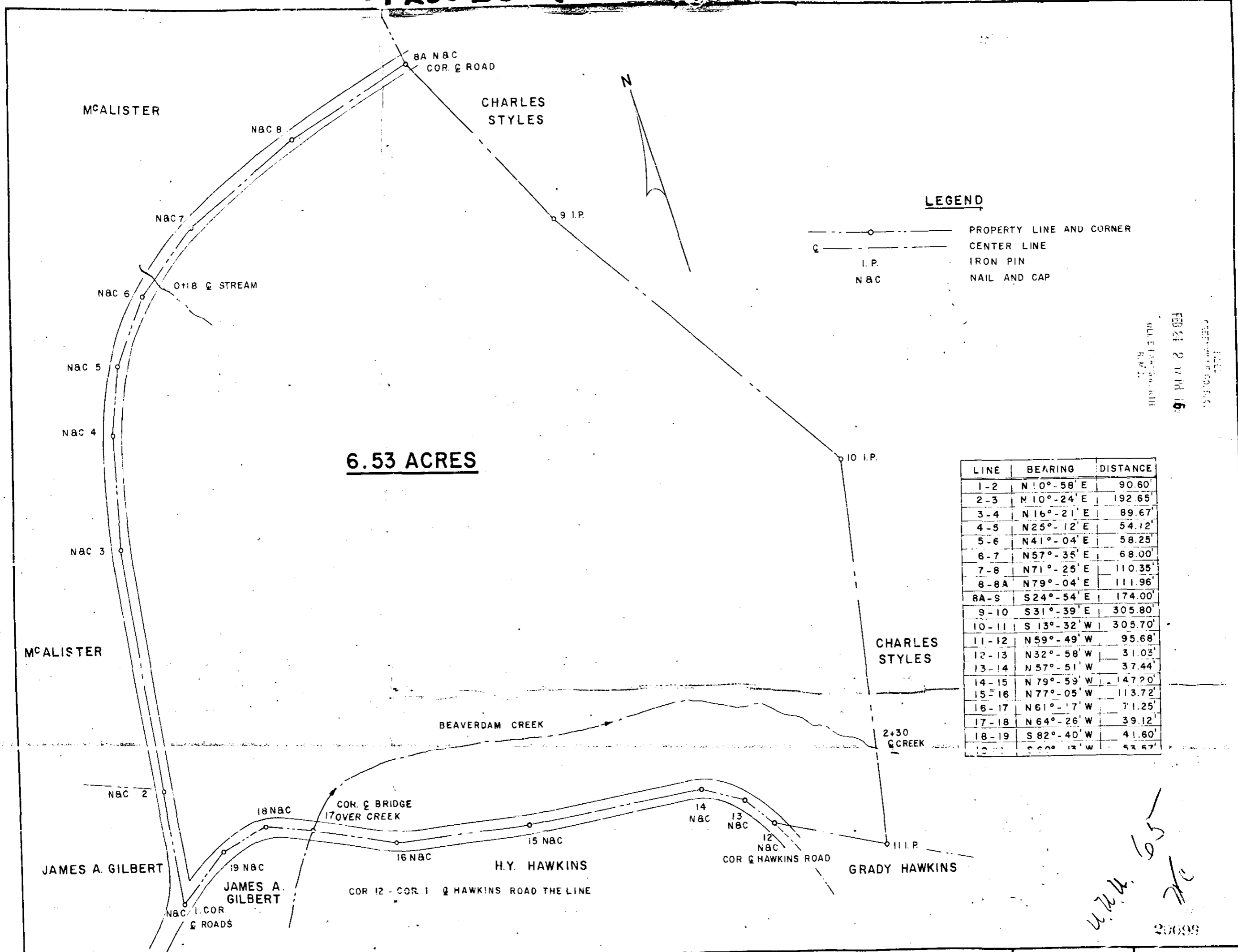


Plat Book-UUU-Page 65



6.53 ACRES

LEGEND

- PROPERTY LINE AND CORNER
- CENTER LINE
- I.P. IRON PIN
- N&C NAIL AND CAP

LINE	BEARING	DISTANCE
1-2	N 10°-58' E	90.60'
2-3	N 10°-24' E	192.65'
3-4	N 16°-21' E	89.67'
4-5	N 25°-12' E	54.12'
5-6	N 41°-04' E	58.25'
6-7	N 57°-35' E	68.00'
7-8	N 71°-25' E	110.35'
8-8A	N 79°-04' E	111.96'
8A-9	S 24°-54' E	174.00'
9-10	S 31°-39' E	305.80'
10-11	S 13°-32' W	305.70'
11-12	N 59°-49' W	95.68'
12-13	N 32°-58' W	31.03'
13-14	N 57°-51' W	37.44'
14-15	N 79°-59' W	147.20'
15-16	N 77°-05' W	113.72'
16-17	N 61°-17' W	71.25'
17-18	N 64°-26' W	39.12'
18-19	S 82°-40' W	41.60'
19-20	S 60°-13' W	53.57'

U.U.U. 65
7/c
20699

	DAVIS & FLOYD ENGINEERS, INC. GREENWOOD, S. C. SURV. BY: <i>[Signature]</i> REG. NO. 1574	TOWN OF TRAVELERS REST GREENVILLE COUNTY, S. C. OWNER	PROPERTY SURVEY EAST LAGOON SITE DRAWING TITLE	DRAWN: G. L. W. CHECKED: J. M. M. APPROVED: E. I. D.	SCALE: 1" = 50' DATE: SEPT. 24, 1968
NO.	REVISION	CHKD. DATE			

#20099 Filed This 24 day of Feb. 19 68
 And Recorded in Vol. UUU Page 65 at 2:17 P.M.
[Signature]
 Register Mesme Conveyance Greenville County, S. C.