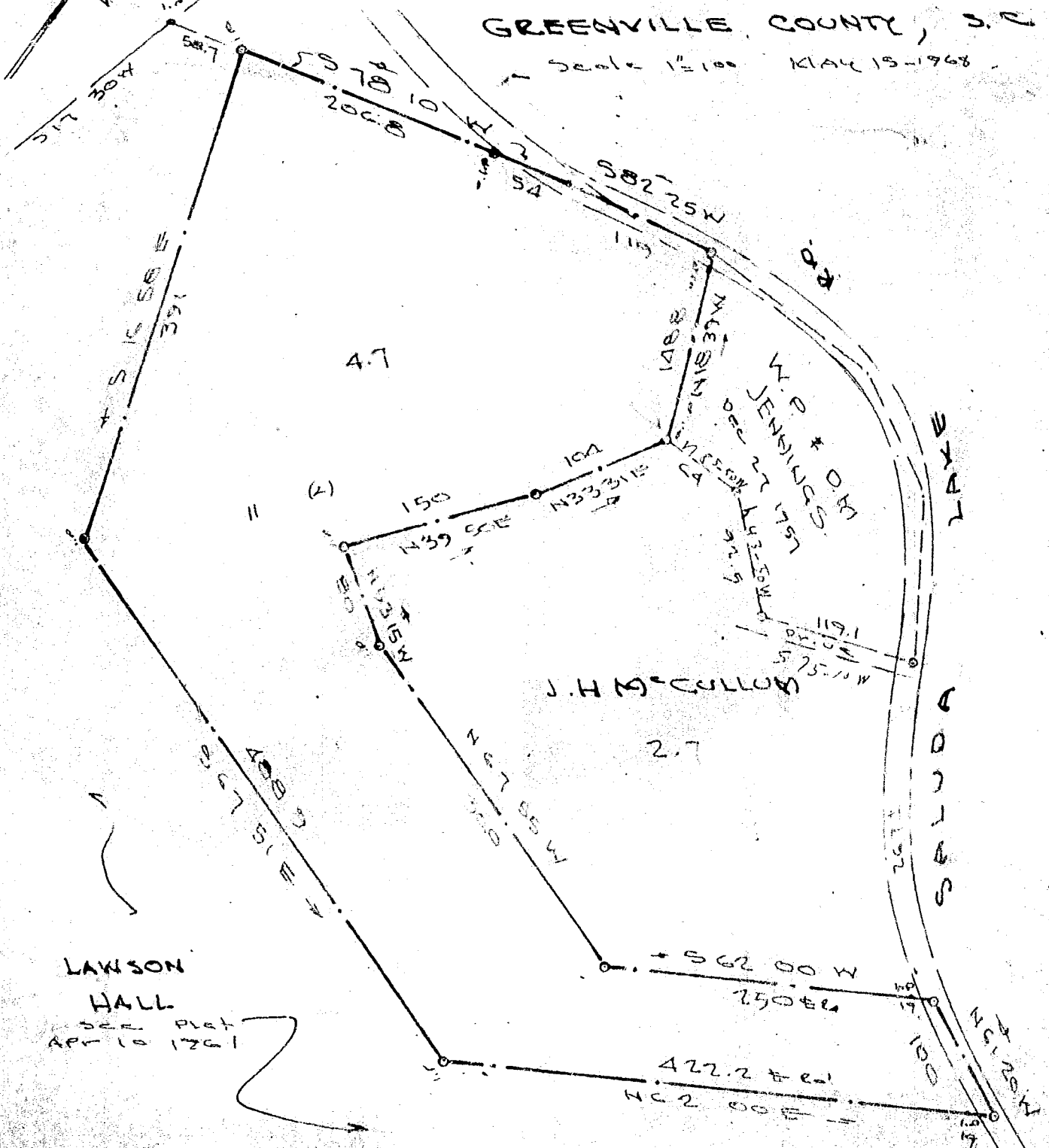


#30868 Filed This 30 day of May 1968
 And Recorded in Vol. XXX Page 187 at 12:40 P.
 Ollie Jarmanworth
 Register Masne Conveyance Greenville County, S. C.

12:40 P.M.
 May 30, 1968
 R.M.C.

PROPERTY OF
LAWSON HALL
 GREENVILLE COUNTY, S. C.

Scale = 1" = 100' MAY 15 - 1968



50¢ 30868

XXX-157 JONES ENGINEERING SERVICES

B 3.1

DAD COPY