



Fiscal year ended June 30, 2010



*Greenville County's
Much of the local*



Our Mission:

“Provide quality public service to all citizens of Greenville County.”

*water is considered among the best in the world.
water flows from the area's mountain reservoirs.*



Letter to the citizens of the
County of Greenville4

Greenville County
Government6

About Greenville County8

Summary of Financial
Information 10

Functions of Government..... 12

Letter to the Citizens

Dear Citizens,

At Greenville County we are honored to be "...at your service." Our mission is to provide quality public service to all citizens of the County. Proper budgeting and financial management allows Greenville County to achieve and exceed this goal while being good stewards of taxpayer dollars.

Greenville County government takes great pride in our transparency and accountability. That is why I am pleased to present the Popular Annual Financial Report (PAFR) for the fiscal year ended June 30, 2010. The purpose of the PAFR is to share our financial story with citizens in an easy-to-read format.

The County also prepares a Comprehensive Annual Financial Report (CAFR) which provides greater detail of the County's finances. We invite you to visit our website www.greenvillecounty.org to view the CAFR, Operating and Capital Budget and other financial information provided to citizens of Greenville County.

Greenville County continues to meet the highest standards of financial reporting and I am honored to share this information with you – the citizens we proudly serve.



Sincerely,

A handwritten signature in black ink, appearing to read 'Joseph Kernell', written over a light blue horizontal line.

Joseph Kernell
Greenville County Administrator

The Vision:

“A thriving, vibrant, diverse community with abundant opportunities for unmatched quality of life that blends tradition and innovation.”



Situat
activities





*ed in the foothills of the Blue Ridge Mountains, outdoor
abound, including an equestrian park overflowing with
65 acres of riding trails, picnic areas and nature trails*



Greenville County Government

Greenville County Council was created in 1967 by the South Carolina General Assembly. In 1973, a County Executive was appointed to oversee the daily operation of delivering county government services. In 1976, under Home Rule legislation, Greenville County adopted the council/administrator form of government. The County Council is the legislative, policy-making body for county government. The twelve County Council members elected from single-member districts serve four-year staggered terms. Greenville County provides a full range of government services, including law enforcement, judicial system, health services, social services, emergency medical transport, infrastructure construction maintenance and comprehensive planning.



Front Row L to R:
Xanthene Norris, Judy Gilstrap,
Lottie Gibson, Liz Seman

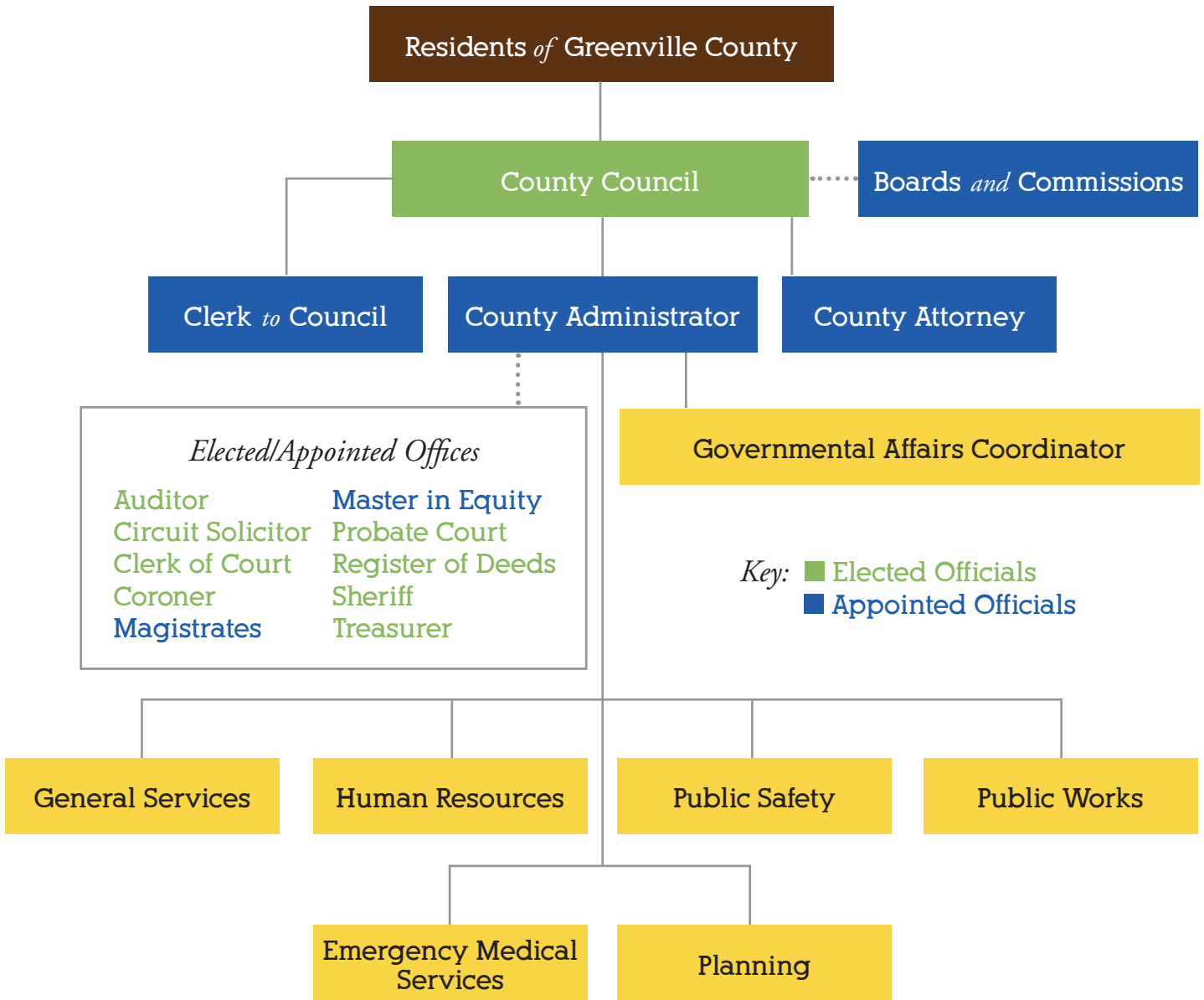
Middle Row L to R:
Joe Dill, Fred Payne,
Joseph Baldwin, Willis Meadows

Back row L to R:
Bob Taylor, Butch Kirven,
Jim Burns, Sid Cates

County Council meets the 1st and 3rd Tuesday of each month in
Council Chambers at 301 University Ridge (County Square).

See www.greenvillecounty.org/County_Council/Information.asp
for more information.

County of Greenville Organizational Chart



Animal Control
(864) 467-7595

Business Registration
(864) 467-7300

Clerk of Court
(864) 467-8551

Codes Enforcement
(864) 467-7090

County Council
(864) 467-7115

Detention Center
(864) 467-2330

Economic Development
(864) 235-2008

EMS
(864) 467-7005

Homestead Exemption
(864) 467-7300

Hospitality Tax Payments
(864) 467-7567

Human Relations
(864) 467-7095

Legal Residence Est.
(864) 467-7300

Mobile Home Permits
(864) 467-7300

Permits
(864) 467-7060

Planning Department
(864) 467-7270

Probate Court
(864) 467-7170

Procurement
(864) 467-7200

Public Works Engineering
(864) 467-7016

Real Property Values
(864) 467-7300

Property Tax Payments
(864) 467-7050

Redevelopment Authority
(864) 242-9801

Register of Deeds
(864) 467-7240

Sheriff
(864) 467-5100

Recycling
(864) 243-9672

Voter Registration
(864) 467-7250

about Greenville County

Encouraged by abundant streams and rivers, textile manufacturers began operating in the Upstate in the 1820's. Over the past thirty years, Greenville County has transformed from the textile capital of the world to a headquarters, manufacturing and warehousing center.

Greenville is known for its high-technology manufacturing, with the engineering industry having a major presence in the area. Considered to be the “economic engine of South Carolina,” Greenville is the largest county in the state. Situated in the northwestern corner, Greenville County is part of one of the nation's fastest growing areas, “The I-85 Corridor,” and offers the perfect combination of industry, work force and culture.





Greenville County has 85,198 acres of protected open spaces and water (17% of the land)



Summary of Financial Information

This report summarizes financial information included in the County's Comprehensive Annual Financial Report (CAFR), and, therefore, is not presented in accordance with generally accepted accounting principles. Data presented is for the primary government which includes all Greenville County governmental functions with the exception of the Greenville County Redevelopment Authority and the Greenville County Library System. Financial information for these two legally separate organizations is included in the County's CAFR.

Balance Sheet

More formally referred to as the Statement of Net Assets, the balance sheet reflects Greenville County's strong financial position as of June 30, 2010. The statement of net assets presents information on all of Greenville County's assets and liabilities, with the difference between the two reported as net assets.

Statement of Net Assets

	Governmental Activities		Business-type Activities	
	2010	2009	2010	2009
ASSETS				
Current and other assets	\$141,853,155	\$152,387,636	\$6,318,062	\$10,045,685
Capital assets	438,917,763	422,636,536	19,954,899	19,501,716
Total assets	580,770,918	575,024,172	26,272,961	29,547,401
LIABILITIES				
Long-term liabilities	167,038,743	177,234,274	4,705,927	4,689,972
Other liabilities	16,850,523	20,685,796	1,337,357	1,295,048
Total liabilities	183,889,266	197,920,070	6,043,284	5,985,020
Total net assets	\$396,881,652	\$377,104,102	\$20,229,677	\$23,562,381



Core Values:

- Spiritual* growth in a family environment
- Excellence* through teamwork
- Responsible* focus on community needs
- Visible* commitment to citizens
- Integrity* in all that we do
- Courageous* adherence to open and honest communication
- Encouragement* of knowledge and competence



*Greenville has been rated one of Bike Magazine's
'Top 5 Best Places to Live and Ride.'*



Functions of Government

Governmental activities of Greenville County include the general government, public safety, highways and streets, economic development, judicial service, health and welfare, and culture and recreation. Governmental activities generally are financed through taxes and intergovernmental revenues.

Business-type activities include solid waste disposal, storm water quality and control, and the parking facility. These activities are intended to recover all or a significant portion of their costs through user fees and charges.

Income Statement

The County's income statement, referred to as the Statement of Activities, reports all financial activity during the fiscal year.

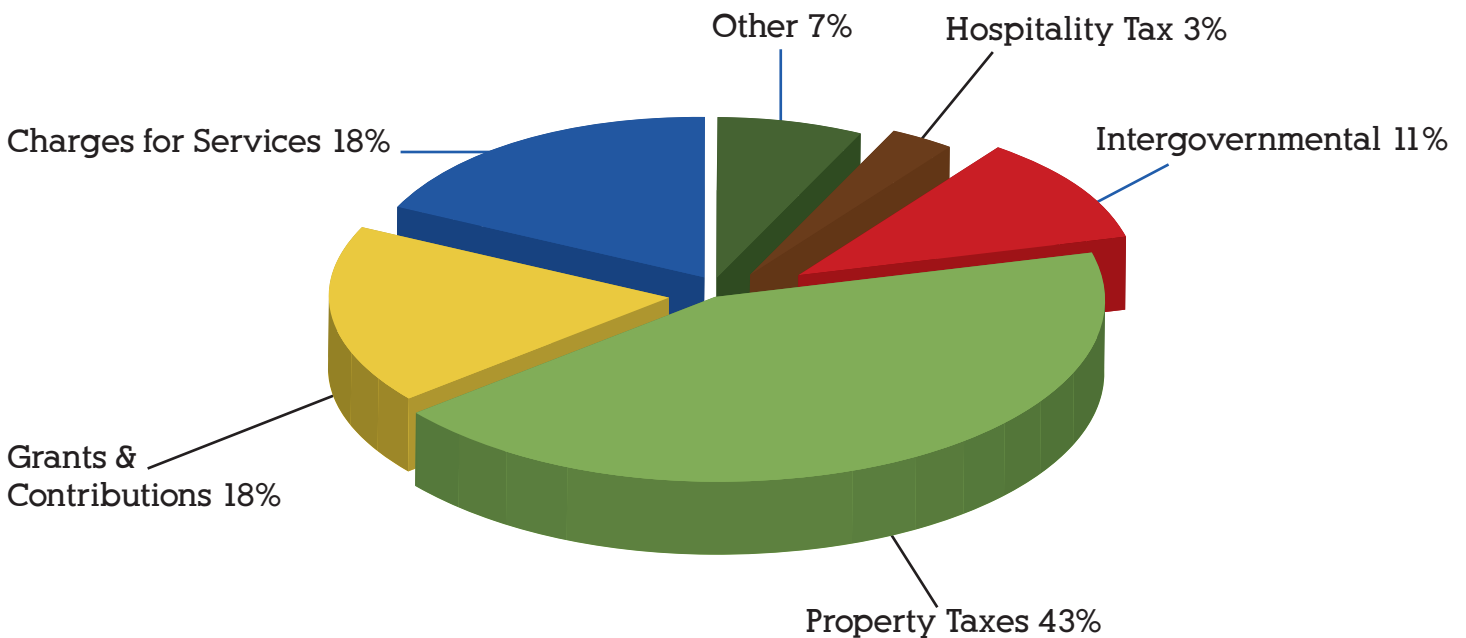
	Governmental Activities		Business-type Activities	
	2010	2009	2010	2009
REVENUES				
Property Taxes	\$84,414,697	\$84,438,372	\$3,873,488	\$3,931,875
Charges for services	34,944,519	41,250,457	11,092,972	10,350,466
Grants and contributions	35,459,160	16,734,941		
Intergovernmental	22,514,752	33,157,502		
Hospitality tax	6,690,579	6,734,239		
Other revenue	13,846,654	13,492,589	276,830	277,988
Total revenues	\$197,870,361	\$195,808,100	\$15,243,290	\$14,560,329
EXPENSES				
General government	19,519,668	27,599,346	–	–
Public safety	82,265,496	81,417,906	–	–
Judicial services	20,586,844	20,254,482	–	–
Public works	29,841,965	31,611,620	–	–
Boards & commissions	17,916,255	19,295,645	–	–
Interest and fiscal charges	7,962,583	8,005,747		
Solid waste	–	–	11,461,320	6,844,449
Storm water	–	–	7,348,913	7,960,519
Parking facility	–	–	143,637	165,511
Total expenses	\$178,092,811	\$188,184,746	\$18,953,870	\$14,970,479
CHANGE IN NET ASSETS				
Net assets – Beginning	377,104,102	369,480,748	23,562,381	23,972,531
Adjustment - beginning net assets	–	–	377,876	–
Net assets – Ending	\$396,881,652	\$377,104,102	\$20,229,677	\$23,562,381



*Greenville County hosts more than
60 splendid golf courses.*

Functions of Government *continued*

Revenue Sources – Governmental Activities



Expenses – Governmental Activities



**Includes Roads/Bridges, Code Enforcement and Animal Shelter*



County Courthouse located at corner of Church and East North Street



Financial Operations Division

*301 University Ridge, Suite 200,
Greenville, South Carolina 29601
Phone: (864) 467-7020*