

# Tree Canopy Assessment Greenville County, South Carolina

## Key Stats



Current Tree Canopy is 38%



Potential Planting Area is 25,304 acres



2,144,327 more small trees (20 ft diameter crowns) can be planted



1,416,139 more large trees (40 ft diameter crowns) can be planted



Potential Tree Canopy could be 46%



The County's goal is to minimize loss of canopy and forested open space with policy, planning and tree plantings.

## Key Strategies

- Bolster tree protections within the current draft of the Unified Development Ordinance.
- Support reforestation plantings on floodplains.
- Apply for technical assistance to model the impacts of stormwater runoff from canopy loss.
- Continue to collaborate with regional tree nonprofits to plant trees on public and private land.
- Establish specific measurements and requirements for preserving and/or replacing heritage trees.

April 2024





# Executive Summary

Located in the Upstate Region of South Carolina, the County of Greenville is the most populous county and an area of intense new urban development. The county's landscape is characterized by an urban-rural gradient, with dense urban development in the south to more rural, mountainous and forested terrain in the north. Greenville county's tree canopy is currently 38%. Due to variable land uses the tree canopy is unevenly distributed making setting a county-wide goal challenging. However, the county is committed to an overarching goal of reducing tree and forest loss.

**Greenville County's Tree Canopy Goal is to minimize tree canopy and forested open space loss through policy, planning and strategic tree plantings. The county plans to refine and set its canopy goals to better reflect the urban-rural gradient within the county.**

With recent development pressure and an increase in population growth, being able to maintain its current tree canopy and forests will be difficult. The best goal moving forward will be to minimize forest loss and ensure connectivity as new developments continue. A top strategy approach is to strengthen ordinances related to tree protection and replacement during development. The county is working on a Unified Development Code (UDO) that has many new provisions to better protect trees. These provisions ensure that more forest patches or trees are saved on sites, or will require that when impacts are unavoidable, enough trees are planted to recover lost canopy. These measures will also help more equitably distribute trees in priority neighborhoods, along stream banks and in floodplains. Partnerships with municipalities within the county, especially the City of Greenville and nonprofits such as TreesUpstate will also be crucial to get trees planted where they are most needed.



*Engaging the community through non-governmental organizations can maximize tree plantings on both public and private land.*

## Strategies for the Tree Canopy

**Strengthen the Unified Development Ordinance to ensure robust tree protections are included.**

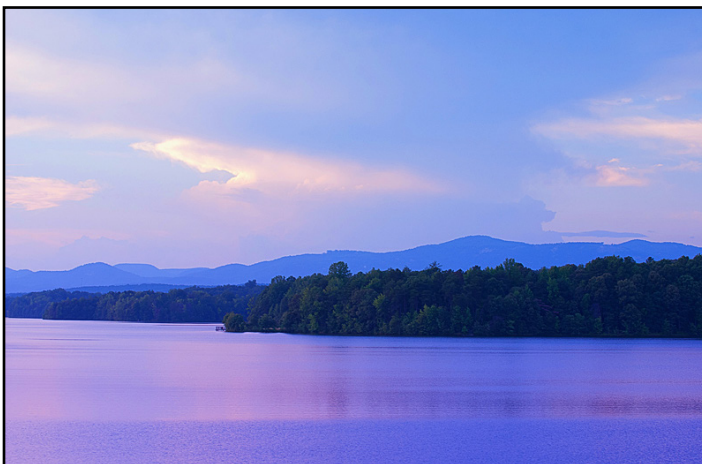
Strategy 1: Require tree save areas during development and create incentives for developers to save more trees.

Strategy 2: Make penalties more severe when land is cleared under the guise of silviculture but then proceeds to development.

Strategy 3: Increase open space requirements within developments and make cluster developments more advantageous when possible.

Strategy 4: Establish specific standards for saving, protecting and replacing Heritage trees during development.

Strategy 5: Create a tree mitigation bank that can be used when tree replacement requirements cannot be met on site.





## **Apply data analysis to understand current tree canopy conditions and benefits.**

Strategy 1: Present data to county leadership and the public on benefits of trees in the county.

Strategy 2: Apply for technical assistance with the South Carolina Forestry Commission for the Trees and Stormwater calculator.

## **Partner with tree-focused local organizations**

Strategy 1: Focus tree planting along stream banks in priority watersheds to capture and filter nonpoint source nutrient runoff.

Strategy 2: Focus tree plantings in floodplains to control storm runoff.

Strategy 3: Continue to partner with TreesUpstate on future planting plans.

Strategy 4: Use a percentage of stormwater utility fees to support forest preservation and new tree plantings.



*Green spaces serve many purposes in a community. Forests provide access to recreation opportunities, habitat for wildlife and act as water filtration sources and carbon sinks.*



*The "Roots Tree" is a famous tree in the Reedy River Park located in downtown Greenville, SC. It is one of many landmarks in the busy downtown that has become famous for its green rejuvenation. This American Beech was awarded the Heritage Tree designation by TreesSC for 2023.*



*TreesUpstate has been and will continue to be an important partner for Greenville County to help manage their tree canopy .*



# Greenville County, South Carolina Classified Land Cover

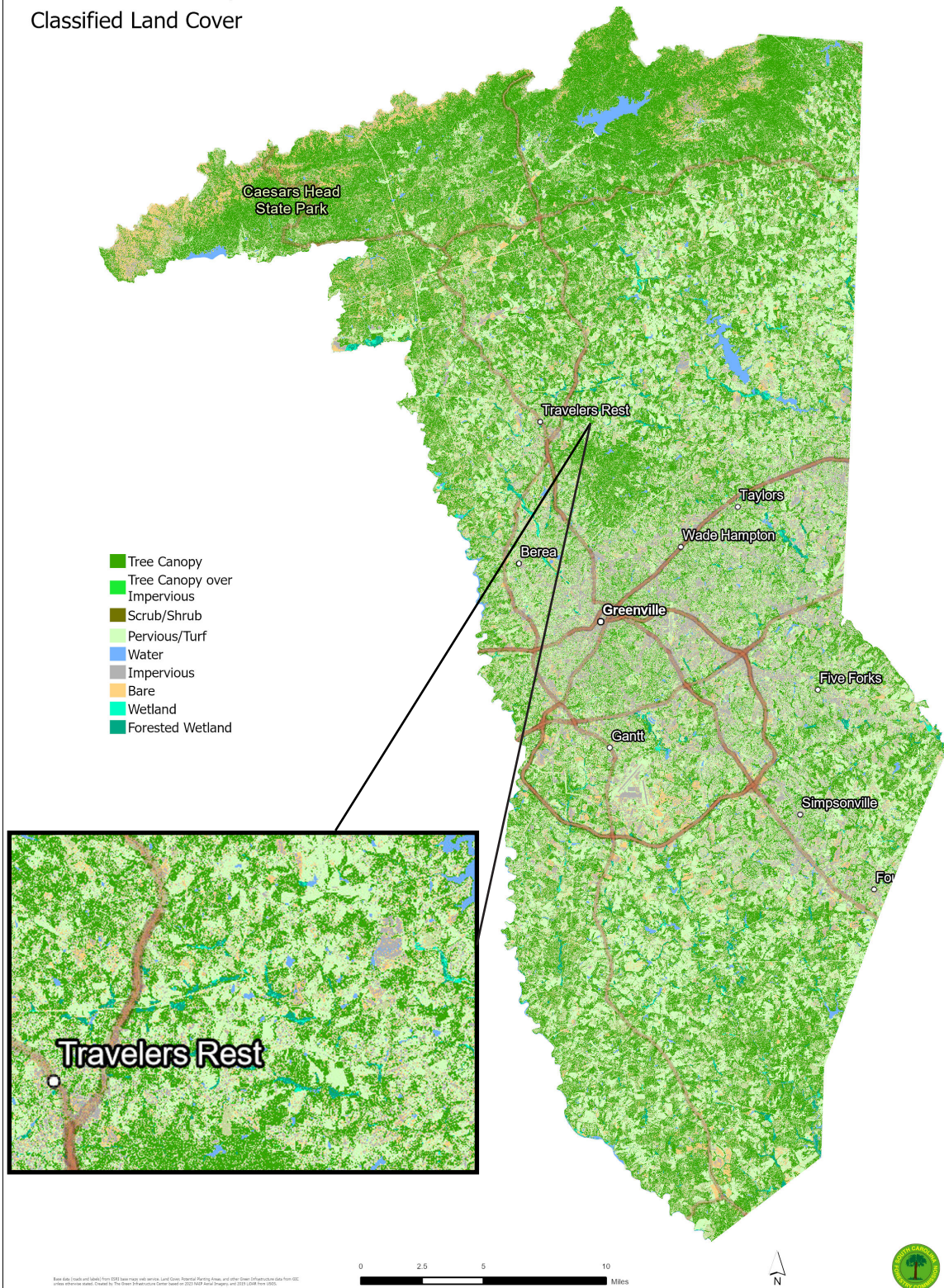


Figure-1: A map of land cover of Greenville County based on the National Agriculture Imagery Program (NAIP) 2021.





# Greenville County, South Carolina Potential Planting Areas (PPA)



Figure-2: A map of Potential Planting Areas (PPA) in Greenville County.





# Greenville County, South Carolina Canopy Coverage by Zoning

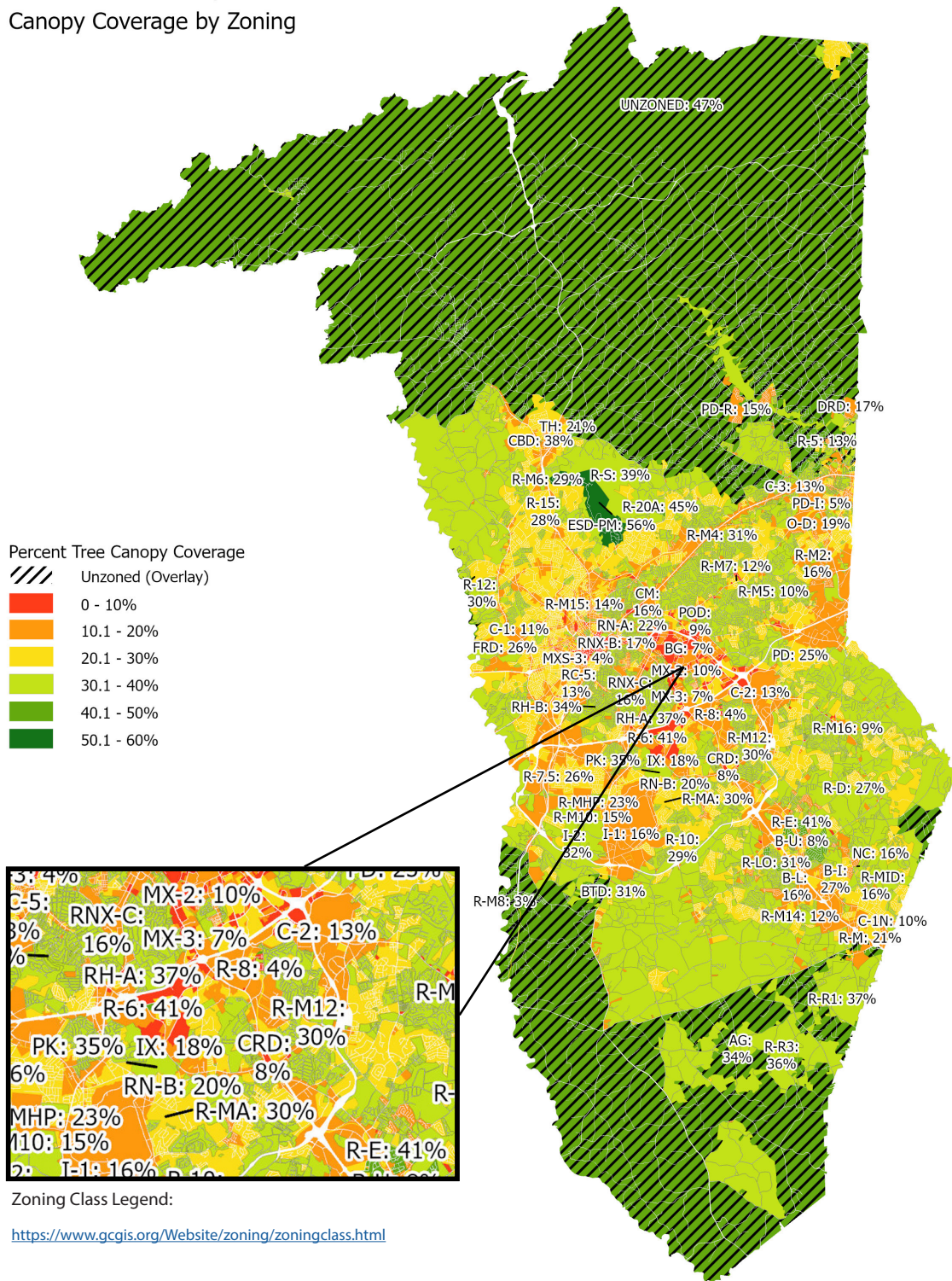


Figure-3: A map of tree canopy by zoning class in Greenville County.





# Greenville County, South Carolina Canopy Coverage and Impervious Surface by HUC12 Watersheds

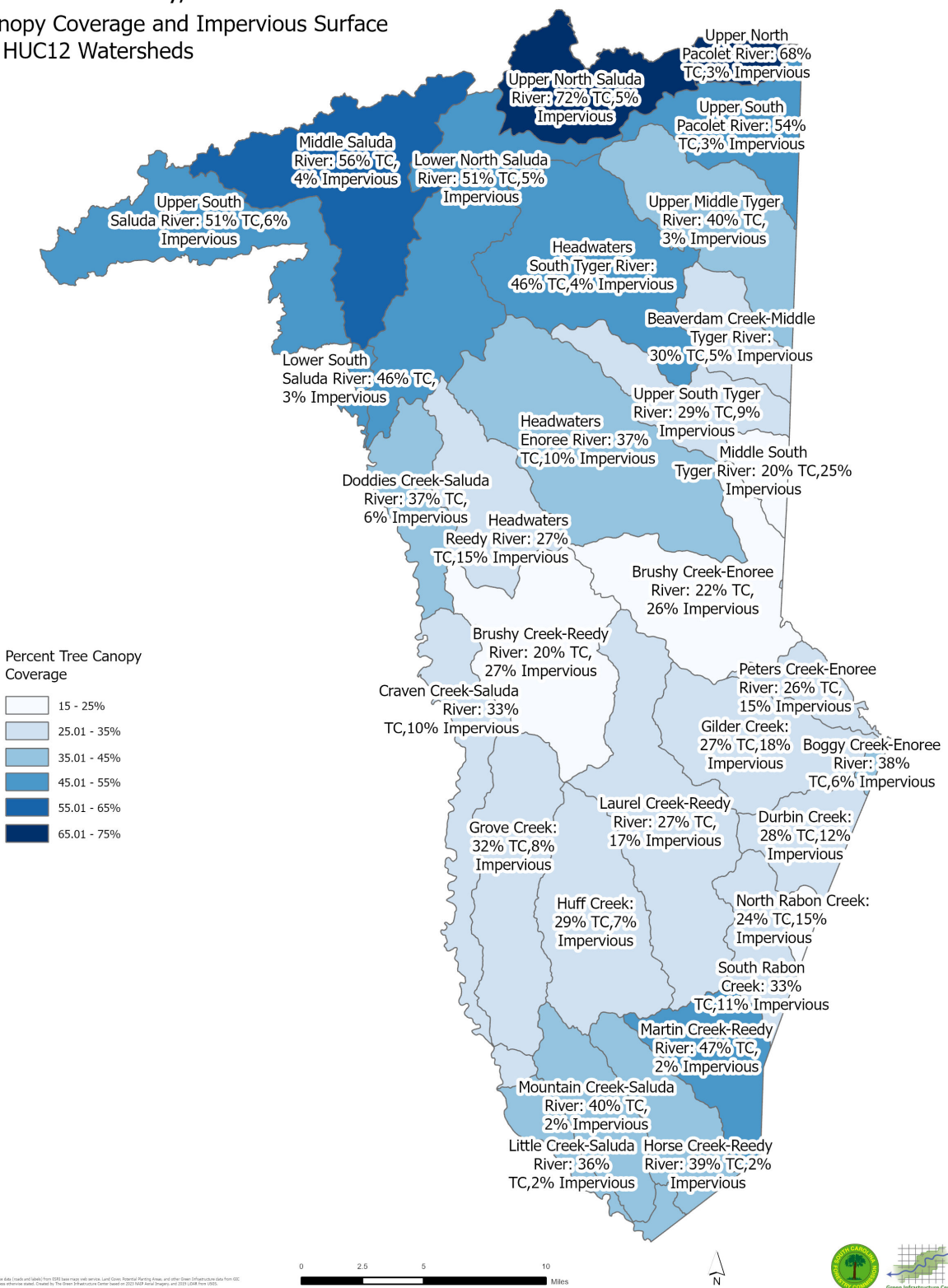


Figure-4: A map of percent tree canopy and percent impervious surfaces by Hydrologic Unit Code 12 watershed in Greenville County.





# Greenville County, South Carolina

## Current Street Tree Canopy Coverage

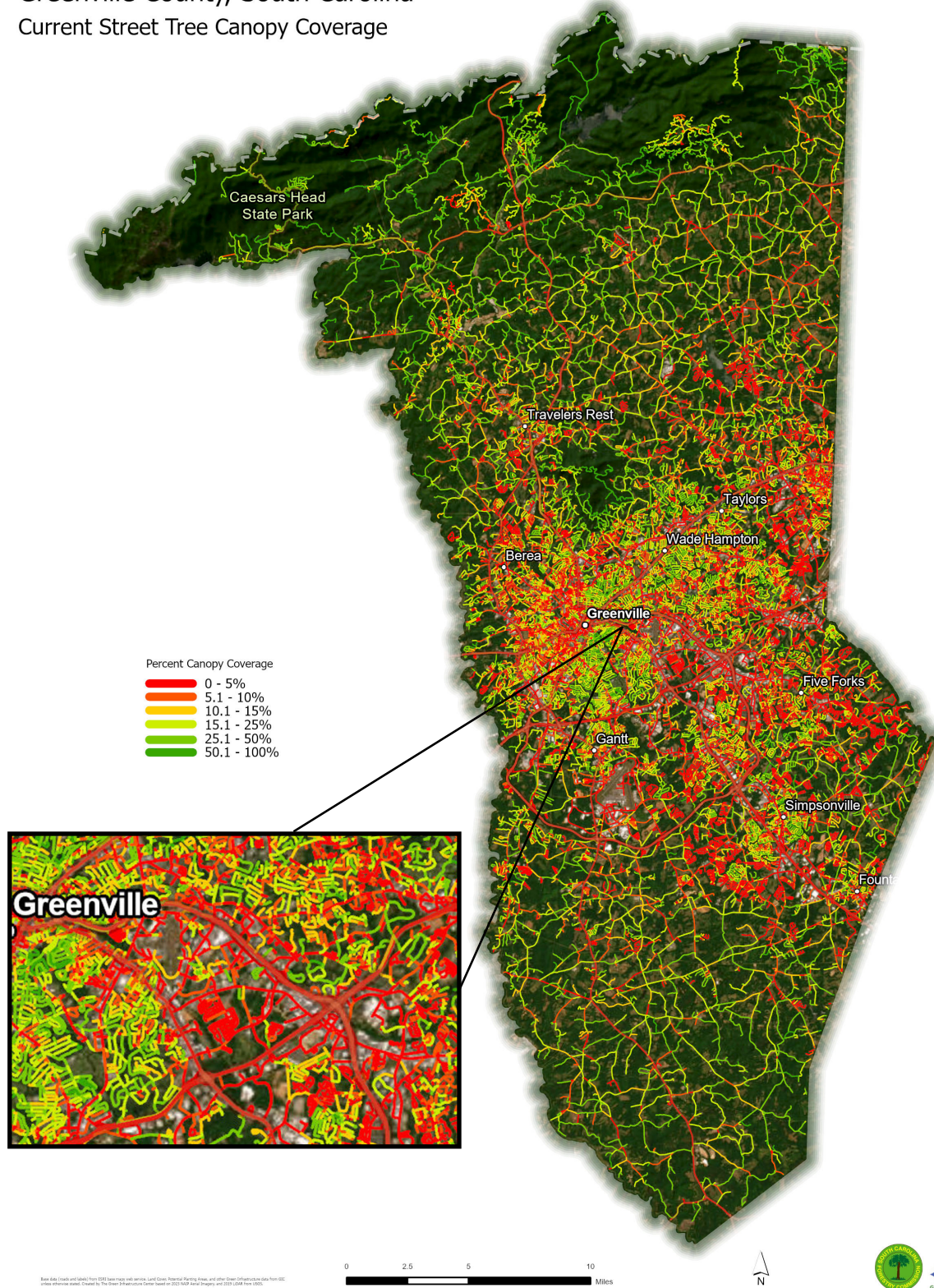


Figure-5: A map of tree canopy within 50 feet of street centerlines in Greenville County.



Greenville County, South Carolina  
Canopy Coverage by Council District

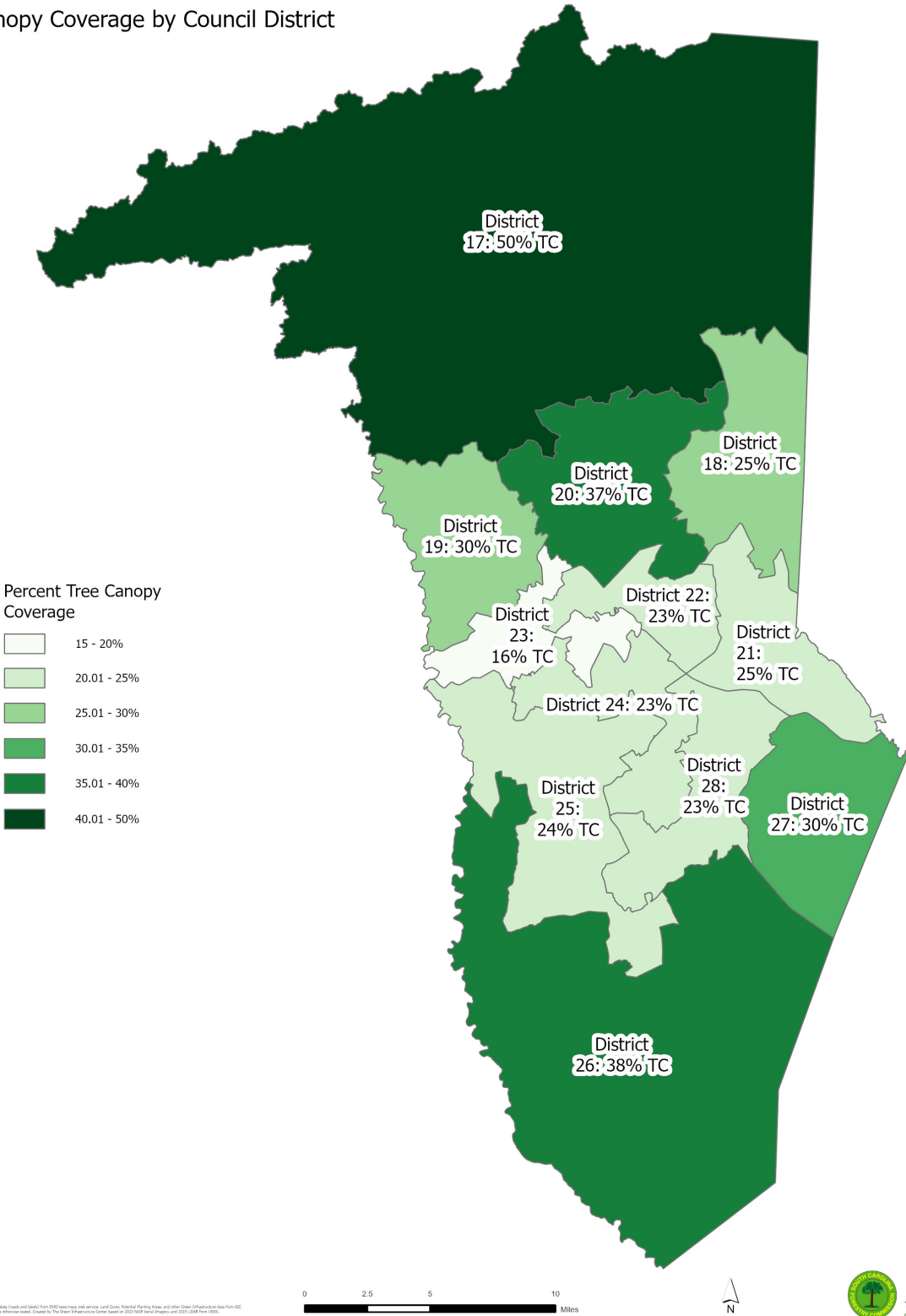


Figure-6: A map of percent tree canopy by Council Districts in Greenville County.

