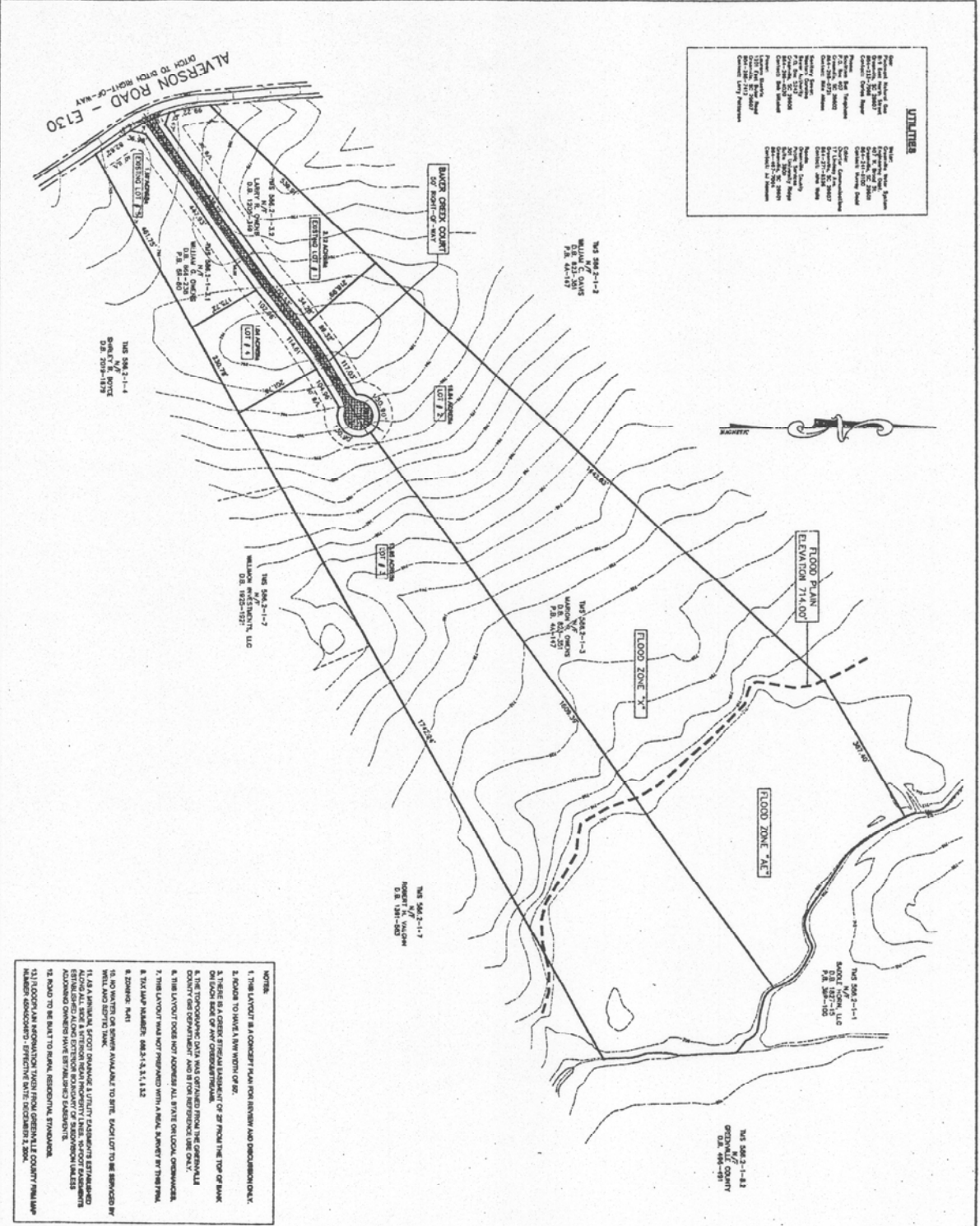
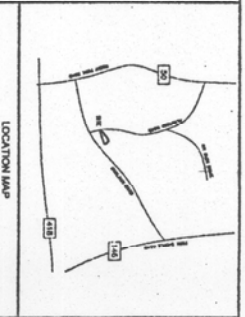


**UTILITIES**

Public Water Main  
Public Sewer Main  
Public Gas Main  
Public Electric Main  
Public Telephone Main  
Public Cable TV Main  
Public Storm Sewer Main  
Public Fire Hydrant  
Public Fire Alarm  
Public Fire Alarm Box  
Public Fire Alarm Bell  
Public Fire Alarm Control Panel  
Public Fire Alarm Control Station  
Public Fire Alarm Control Unit  
Public Fire Alarm Control Panel  
Public Fire Alarm Control Station  
Public Fire Alarm Control Unit



- NOTES**
1. THIS LAYOUT IS A CONCEPT FROM YOUR REVIEW AND DISCUSSION ONLY.
  2. ROAD TO HAVE A NEW WIDTH OF 20'.
  3. THERE IS A CREEK STREAM BARRIERS OF 20' FROM THE TOP OF BANK ON EACH SIDE OF ANY CROSS-SECTION.
  4. THE TOPOGRAPHIC DATA WAS OBTAINED FROM THE GREENVILLE COUNTY GIS DEPARTMENT.
  5. THE LAYOUT DOES NOT ADDRESS ALL UTILITIES ON LOCAL OWNERSHIP.
  6. THE LAYOUT DOES NOT ADDRESS WITH A NEAR BARRETT IN THE FINAL.
  7. THE LAYOUT DOES NOT ADDRESS WITH A NEAR BARRETT IN THE FINAL.
  8. THE LAYOUT DOES NOT ADDRESS WITH A NEAR BARRETT IN THE FINAL.
  9. ZONING MAP.
  10. NO UTILITIES OR SERVICES AVAILABLE TO SITE. EACH LOT TO BE SERVICED BY WELL AND SEPTIC TANK.
  11. AS AN ANNUAL SPORTS AND UTILITY PLANNING ESTABLISHED ESTABLISHED ALONG ELECTION BARRIERS OF 20' FROM THE TOP OF BANK ON EACH SIDE OF ANY CROSS-SECTION.
  12. ROAD TO BE BUILT TO MAINTAIN RESIDENTIAL STANDARDS.
  13. FLOODPLAIN INFORMATION TAKEN FROM GREENVILLE COUNTY FLOODPLAIN NUMBER 400000000 - EFFECTIVE DATE: NOVEMBER 2, 2004.



**PRELIMINARY**  
**05-102**

**ALVERSON ACRES**

PROJECT: ALVERSON ACRES, LLC  
 14.86 ACRES  
 14.86 ACRES  
 14.86 ACRES

DATE: 1-3-05

SCALE: 1" = 400'

1" = 400'