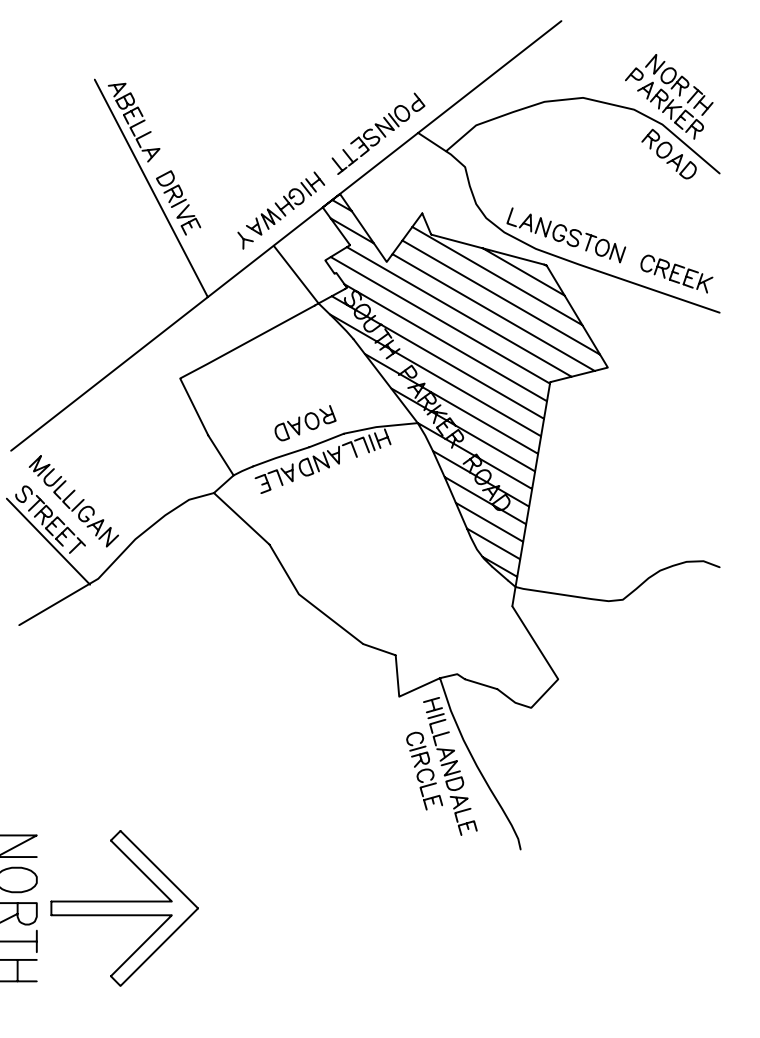




- NOTES**
1. ROADS TO HAVE A RW WIDTH OF 44'.
 2. CUL-DE-SACS TO HAVE A RW RADIUS OF 50'.
 3. MINIMUM SETBACK LINE OF 20' ALONG SUBDIVISION ROADS.
 4. ZONING: R-1M
 5. TAX MAP NUMBERS: 445-1-2
 6. THE APPROXIMATE AREA OF EACH LOT IS 9,000 SF.
 7. THIS PRELIMINARY PLAT SUPERSEDES ALL UNRECORDED LOTS ON THE TREYBERN PRELIMINARY PLAT.



PRELIMINARY

TREYBERN PHASE 2

CENTEX HOMES
7001 PELHAM RD, SUITE M
GREENWILE, SC 29609
(864) 281-8400
OWNER

FREELAND & ASSOCIATES, INC.
GREENWILE, SC 29609
(864) 271-4924 FAX (864) 233-0315
SURVEYOR/ENGINEER

NO. OF ACRES: 40.67 MILES OF NEW ROAD: 0.87

NO. OF LOTS: 111 ZONING: R-1M DATE: 06-01-05

