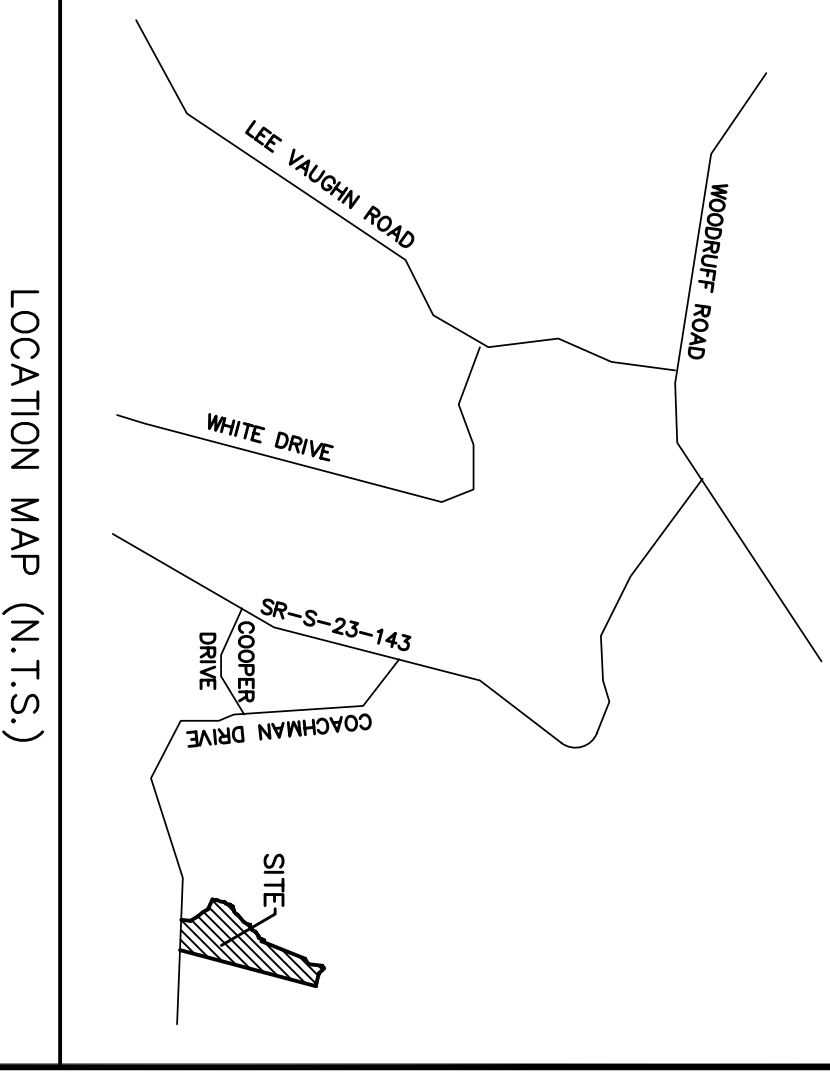


GRID N: 1069140.765
 GRID E: 1652609.591
 LATITUDE: 34°45'59.060"
 LONGITUDE: -82°09'24.003"

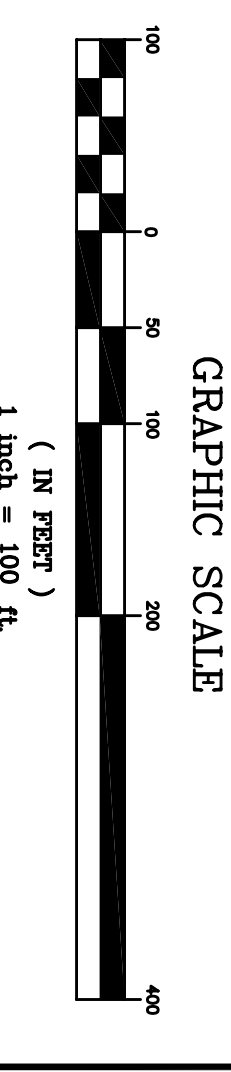


OWNER
 COACHMAN DRIVE DEVELOPERS, LLC
 C/O WILLIAM E. SMITH
 GREENVILLE, SC 29616
 (864) 292-7000

ENGINEER
 GRAY ENGINEERING
 1000 WILSON ROAD
 GREENVILLE, SC 29607
 (864) 297-3027

NO. OF ACRES: 212.89 AC
 NO. OF LOTS: 777
 MILES OF NEW ROAD: 2.63 MI.
 DATE: NOVEMBER 28, 2005

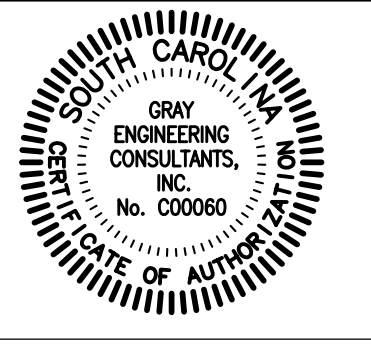
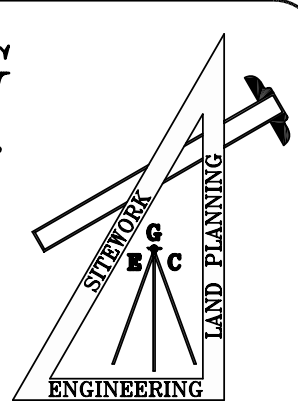
GRAPHIC SCALE
 1 inch = 100 ft.



NO.	DATE	BY	REVISION
A	11/28/05	CJR	SUBMITTED TO COUNTY FOR PRELIMINARY PLAT REVIEW

GRAY ENGINEERING CONSULTANTS, INC.
 engineering · sitework · land planning

132 PILGRIM ROAD · GREENVILLE, SC 29607
 PH: (864) 297-3027 FAX: (864) 297-5187
 GRAY @ GRAYENGINEERING.COM

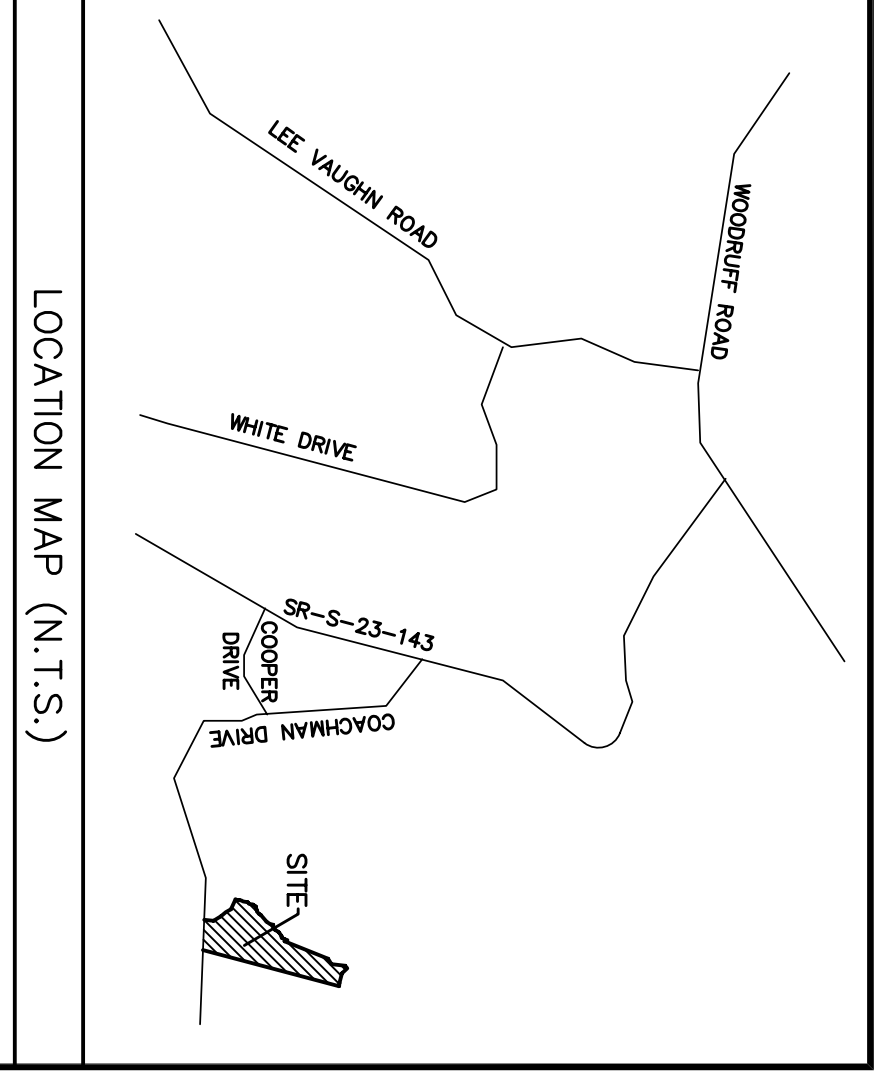
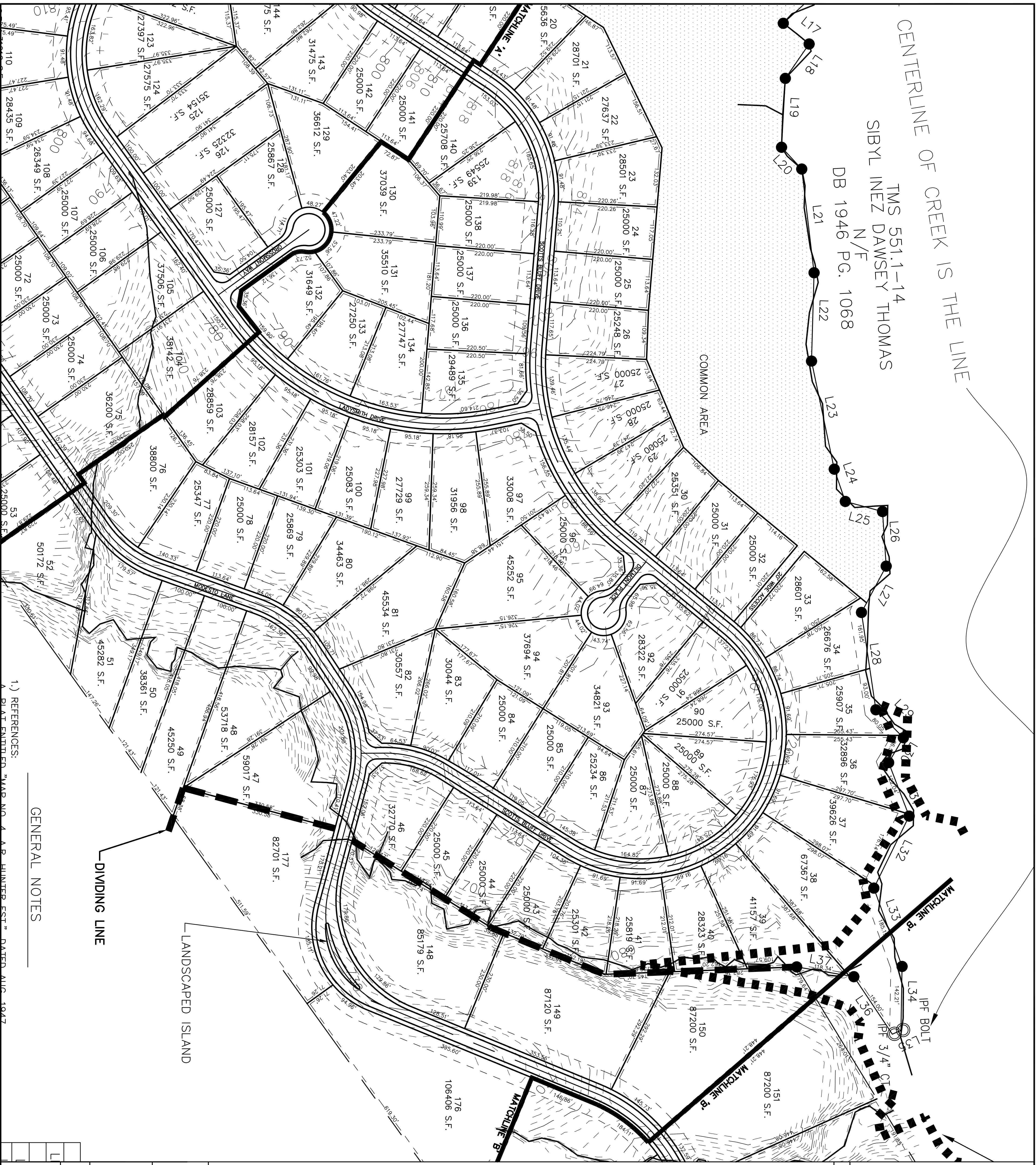


THIS DRAWING AND ASSOCIATED CAD FILES ARE AN INSTRUMENT OF SERVICE AND THE PROPERTY OF GRAY ENGINEERING CONSULTANTS, INC. AND SHALL NOT BE USED OR REPRODUCED IN ANY WAY OTHER THAN AUTHORIZED BY GRAY ENGINEERING CONSULTANTS, INC. IN WRITING.

STAKEOUT PLAN
COACHMAN PLANTATION
 COACHMAN DRIVE
 GREENVILLE COUNTY, SC

CV-1A
 SHEET
 250167-prelim.dwg

DRAWN BY: CJR
 CHECKED BY: BEG
 PROJECT DATE: 11/29/05
 SCALE: 1"=100'
 JOB NO.: 250167
 PLOT DATE: 12/06/05



COACHMAN PLANTATION
TYPE OF DEVELOPMENT: R-S

OWNER: COACHMAN DRIVE DEVELOPERS, LLC
C/O WILLIAM E. SMITH
1000 BELLEVILLE ROAD
GREENVILLE, SC 29616
(864) 292-7000

ENGINEER: GRAY ENGINEERING CONSULTANTS, INC.
1000 BELLEVILLE ROAD
GREENVILLE, SC 29607
864-297-3027

NO. OF ACRES: 212.89 AC
MILES OF NEW ROAD: 2.63 MI.
NO. OF LOTS: 777
DATE: NOVEMBER 28, 2005

GRAPHIC SCALE
1" = 100 FT.

NO.	DATE	BY	REVISION
A	11/28/05	CJR	SUBMITTED TO COUNTY FOR PRELIMINARY PLAT REVIEW

GRAY ENGINEERING CONSULTANTS, INC.
engineering · sitework · land planning

132 PILGRIM ROAD • GREENVILLE, SC 29607
PH: (864) 297-3027 • FAX: (864) 297-5187
GRAY@GRAYENGINEERING.COM

PROFESSIONAL ENGINEER
RONEY E. GRAY
No. 19912
STATE OF SOUTH CAROLINA

PROFESSIONAL ENGINEER
GRAY ENGINEERING CONSULTANTS, INC.
No. C00060
STATE OF SOUTH CAROLINA

THIS DRAWING AND ASSOCIATED CAD FILES ARE AN INSTRUMENT OF SERVICE AND THE PROPERTY OF GRAY ENGINEERING CONSULTANTS, INC. AND SHALL NOT BE USED OR REPRODUCED IN ANY WAY OTHER THAN AUTHORIZED BY GRAY ENGINEERING CONSULTANTS, INC. IN WRITING.

STAKEOUT PLAN

COACHMAN PLANTATION
COACHMAN DRIVE
GREENVILLE COUNTY, SC

CV-1B
SHEET

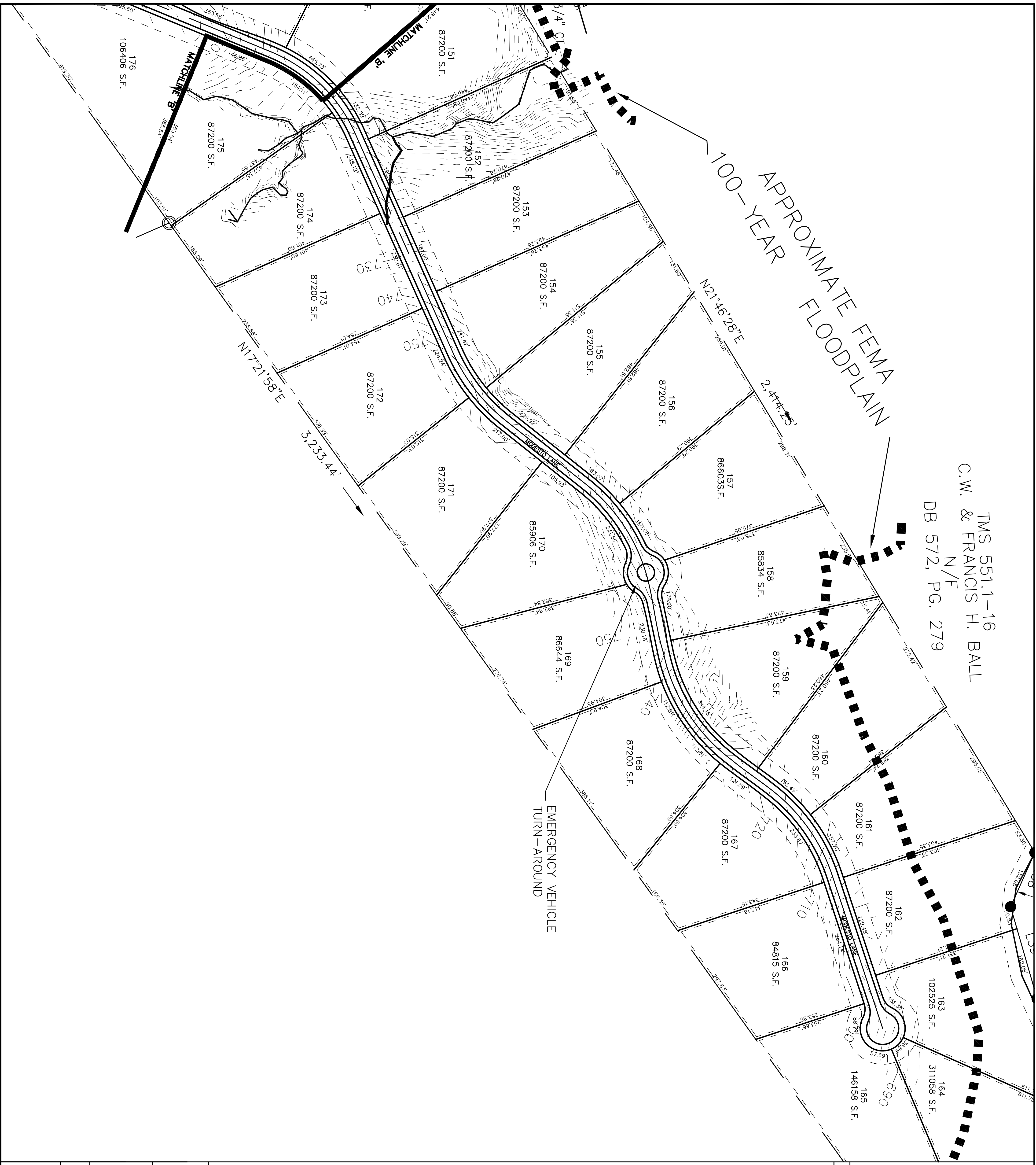
DRAWN BY: CJR
CHECKED BY: HEG
PROJECT DATE: 11/28/05
SCALE: 1"=100'
JOB NO.: 250167
PLOT DATE: 12/06/05

250167-prelim.dwg

1.) REFERENCES:
A. PLAT ENTITLED "MAP NO. 4 AB LIMITED EST." DATED AUG. 1947

GENERAL NOTES

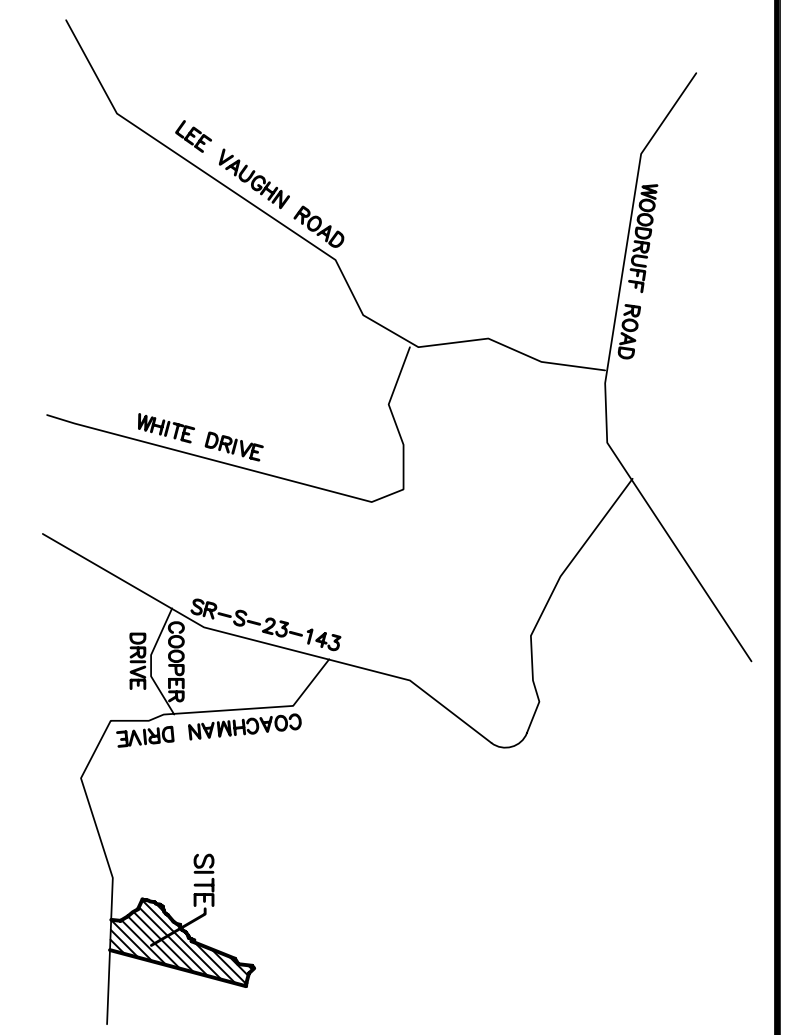
DIVIDING LINE
LANDSCAPED ISLAND



TMS 551.1-16
 N/F
 C.W. & FRANCIS H. BALL
 DB 572, PG. 279

APPROXIMATE FEMA
 FLOODPLAIN

EMERGENCY VEHICLE
 TURN-AROUND

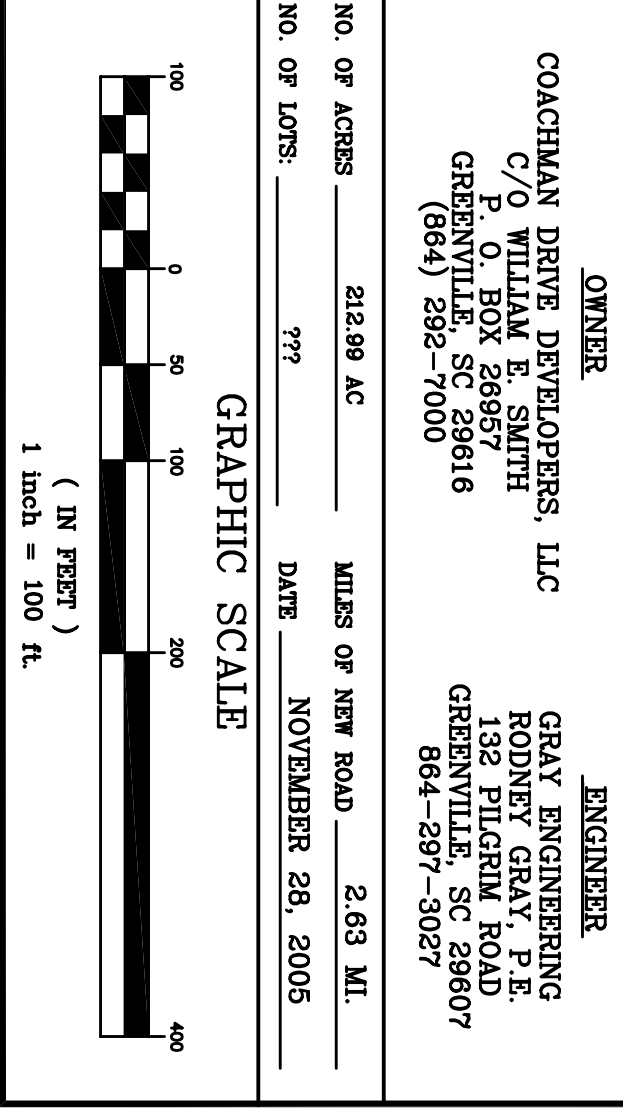


COACHMAN
 PLANTATION
 TYPE OF DEVELOPMENT: R-S

OWNER: COACHMAN DRIVE DEVELOPERS, LLC
 C/O WILLIAM E. SMITH
 1309 BELLEVILLE ROAD
 GREENVILLE, SC 29616
 (864) 292-7000

ENGINEER: GRAY ENGINEERING
 132 PILGRIM ROAD
 GREENVILLE, SC 29607
 (864) 297-3027

NO. OF ACRES: 212.89 AC
 MILES OF NEW ROAD: 2.63 MI.
 NO. OF LOTS: 777
 DATE: NOVEMBER 28, 2005



NO.	DATE	BY	REVISION
A	11/28/05	CJR	SUBMITTED TO COUNTY FOR PRELIMINARY PLAT REVIEW

GRAY ENGINEERING CONSULTANTS, INC.
 engineering · sitework · land planning

132 PILGRIM ROAD · GREENVILLE, SC 29607
 PH: (864) 297-3027 · FAX: (864) 297-5187
 GRAY @ GRAYENGINEERING.COM

STAKEOUT PLAN

COACHMAN PLANTATION

COACHMAN DRIVE
 GREENVILLE COUNTY, SC

DRAWN BY: CJR
 CHECKED BY: BEG
 PROJECT DATE: 11/28/05
 SCALE: 1"=100'
 JOB NO.: 250167
 PLOT DATE: 12/06/05

CV-1C
 SHEET
 250167-prelim.dwg