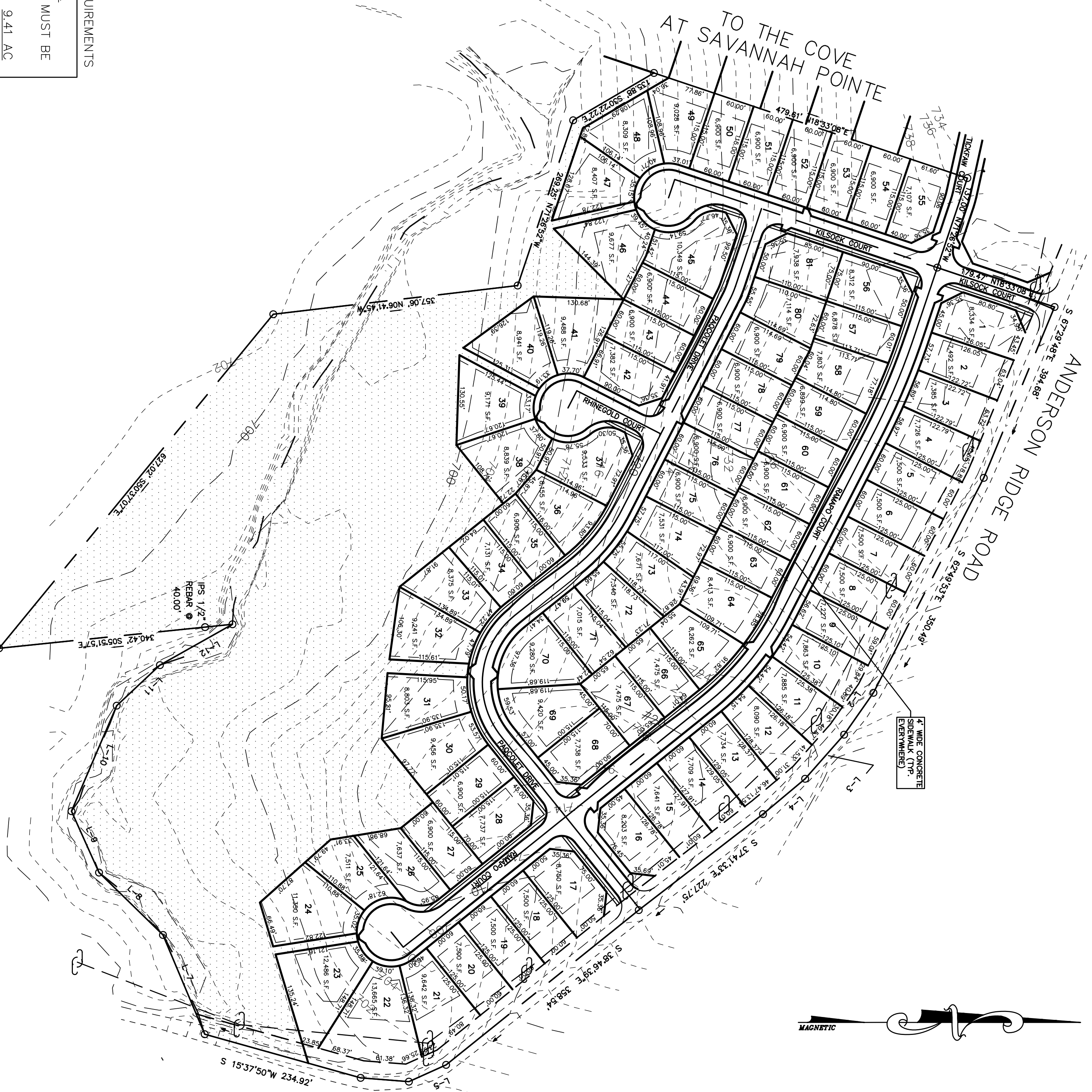
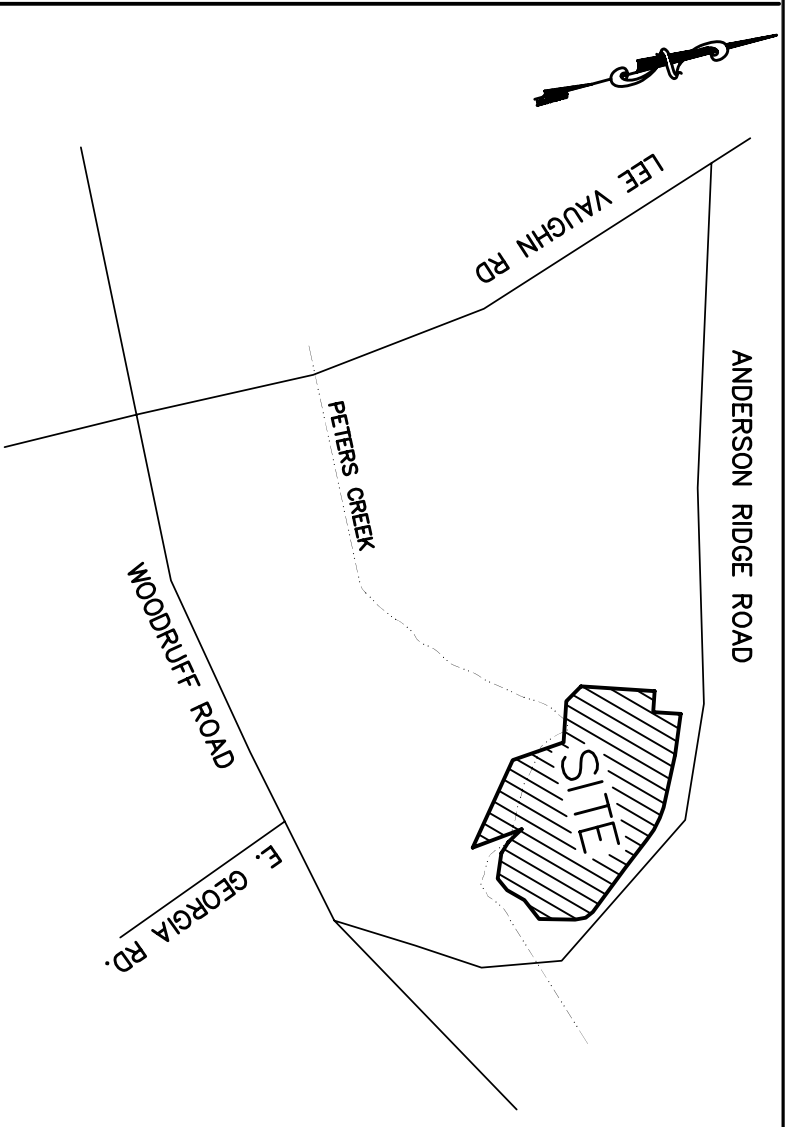


*****CAUTION*****

PIQUETTO UTILITY LOCATION SERVICE
 3 DAY SERVICE. GUARANTEED CALL.
 1" = 100' SCALE. 24 HOURS SERVICE.
 1" ONE DIAL SYSTEM FOR COUNTY AND JOB SAFETY.

SAFETY NOTE TO CONTRACTOR:
 THE CONTRACTOR SHALL SHORE, BRACE, EXCAVATION AND USE THE PIPE TO COMPLY WITH ALL OSHA SAFETY REGULATIONS AND USE THE SAFETY AND COMPLY WITH ALL SAFETY REQUIREMENTS. THE CONTRACTOR SHALL BE RESPONSIBLE FOR THE SAFETY OF THE WORKERS AND THE PUBLIC. THE CONTRACTOR SHALL BE RESPONSIBLE FOR THE SAFETY OF THE WORKERS AND THE PUBLIC. THE CONTRACTOR SHALL BE RESPONSIBLE FOR THE SAFETY OF THE WORKERS AND THE PUBLIC.



LINE TABLE:

COURSE	BEARING	DISTANCE
L-1	S 54°43'20"W	157.62'
L-2	S 54°56'29"E	74.19'
L-3	S 48°24'40"E	93.92'
L-4	S 24°13'14"E	59.924'
L-5	S 04°29'20"W	70.21'
L-6	S 67°11'09"W	156.822'
L-7	S 65°50'24"W	29.957'
L-8	N 66°47'56"W	166.637'
L-9	N 43°11'03"W	85.930'
L-10	N 29°22'14"W	120.81'
L-11		
L-12		

TAX MAP# P/O 550.01-1-12, 551.01-1-1, & P/O 550.01-1-14

GREENVILLE COUNTY GENERAL NOTES

1. ALL NEW LOTS TO HAVE INTERIOR ACCESS ONLY.
2. THERE IS A 5' DRAINAGE AND UTILITY EASEMENT ALONG EACH SIDE OF ALL INTERIOR LOT LINES AND A 10' DRAINAGE AND UTILITY EASEMENT INSIDE ALL EXTERIOR LOT LINES, EXCEPT WHERE NOTED.
3. A STORMWATER MANAGEMENT PLAN AND SEDIMENT CONTROL PLAN HAS BEEN PREPARED FOR THIS PROJECT. EACH PROPERTY OWNER WILL COMPLY WITH THIS PLAN UNLESS AN INDIVIDUAL PLAN IS PREPARED AND APPROVED FOR THAT PROPERTY. GREENVILLE COUNTY IS NOT RESPONSIBLE FOR THE MAINTENANCE OF THE DETENTION AREA.

THE LANDING AT SAVANNAH POINTE
 TYPE OF DEVELOPMENT: R-15(C) (CLUSTER)

OWNER
 TULEY & TULEY, INC.
 1950 NORTH PARK PLACE
 ATLANTA, GA 30339
 770-984-2298

ENGINEER
 GRAY ENGINEERING
 RODNEY GRAY, P.E.
 132 PILGRIM ROAD
 GREENVILLE, SC 29607
 864-287-5027

NO. OF ACRES: 27.94 AC
 NO. OF LOTS: 81
 MILES OF NEW ROAD: 63 MI.
 DATE: APR 4, 2006

GRAPHIC SCALE
 1" = 100'
 1 inch = 100 ft.

PRELIMINARY PLAT

THE COVE AT SAVANNAH POINTE

ANDERSON RIDGE ROAD
 GREENVILLE COUNTY, SC

SOUTH CAROLINA PROFESSIONAL SEAL
 No. 19618
 RODNEY E. GRAY

SOUTH CAROLINA PROFESSIONAL SEAL
 GRAY ENGINEERING CONSULTANTS, INC.
 No. 02060
 STATE OF SOUTH CAROLINA

THIS DRAWING AND ASSOCIATED CAD FILES ARE AN INSTRUMENT OF SERVICE AND THE PROPERTY OF GRAY ENGINEERING CONSULTANTS, INC. AND SHALL NOT BE USED OR REPRODUCED IN ANY WAY OTHER THAN AUTHORIZED BY GRAY ENGINEERING CONSULTANTS, INC. IN WRITING.

GRAY ENGINEERING CONSULTANTS, INC.
 engineering · sitework · land planning

132 PILGRIM ROAD GREENVILLE, SC 29607
 PH: (864) 297-3027 FAX: (864) 297-5187
 GRAY @ GRAYENGINEERING.COM

NO.	DATE	BY	REVISION
A	4/5/06	BWE	SUBMITTED TO GREENVILLE COUNTY FOR PRELIM PLAT

CV-1

DRAWN BY: BWE
 CHECKED BY: RBG
 PROJECT DATE: 3/13/06
 SCALE: 1"=100'
 JOB NO.: 240008
 PLOT DATE: 04/05/06

LANDING-PRELIM.DWG

*OPTION (2) OPEN SPACE REQUIREMENTS
 (27.94 AC. x 0.30) = 8.38 AC.
 30% OF THE TOTAL SITE AREA MUST BE DESIGNATED AS OPEN SPACE.
 TOTAL OPEN SPACE PROVIDED: 9.41 AC

NOTE: RETENTION AREAS WILL BE COUNTED TOWARDS OPEN SPACE CALCULATIONS.

*NOTE:
 THIS SUBDIVISION IS DEVELOPED UNDER THE OPTION #2 REQUIREMENTS FOR OPEN SPACE PROVIDED SET FORTH IN THE MOST RECENT GREENVILLE COUNTY ZONING ORDINANCE.

SETBACKS:
 50' SETBACK OFF ANDERSON RIDGE ROAD
 20' FRONT SETBACK
 25' SETBACK ALONG ALL EXTERIOR PROPERTY LINES