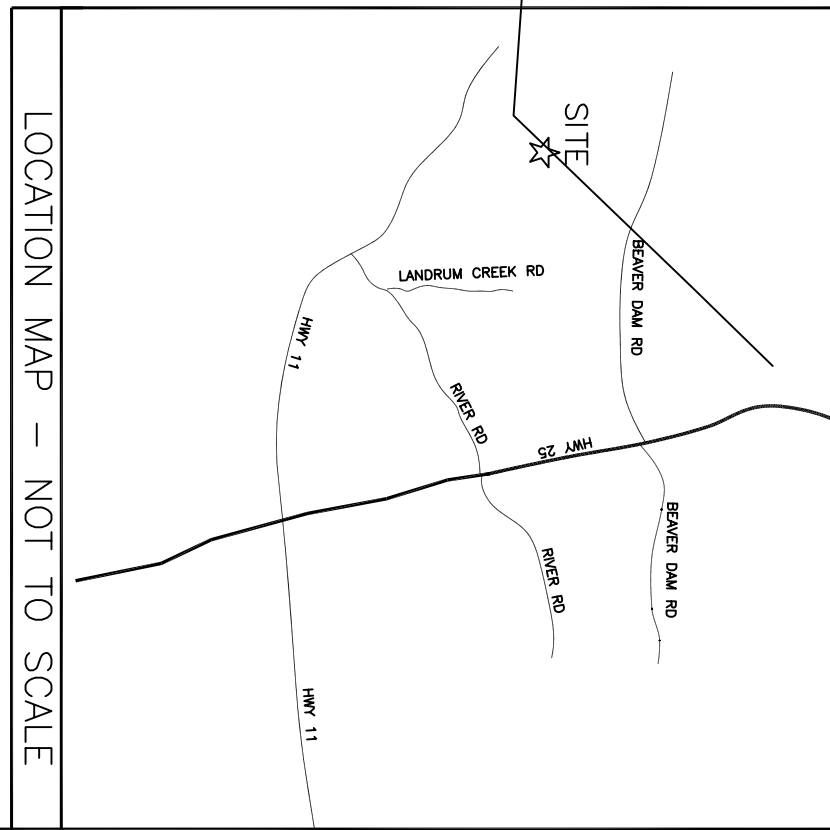
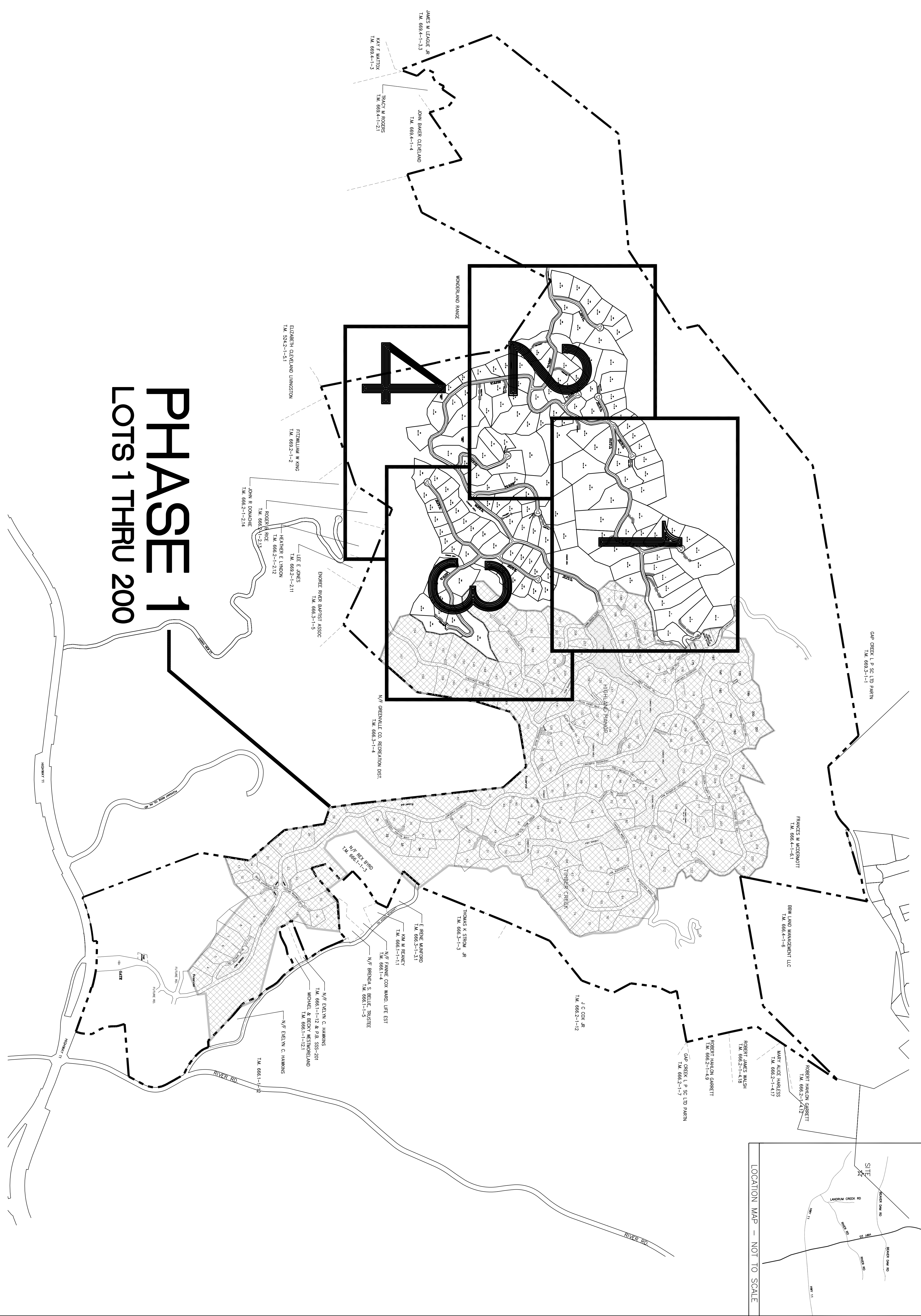


# PHASE 1

## LOTS 1 THRU 200





**PRELIMINARY PLAT  
(SHEET 1 OF 4)  
CLIFFS MOUNTAIN PARK  
PHASE 2A  
TRACTS 1 THRU 146**

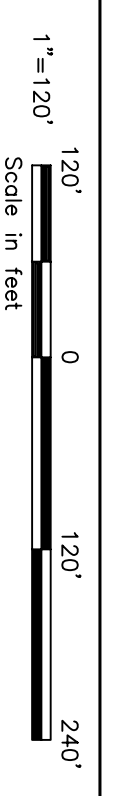
James B. Anthony, Pres.  
The Cliffs,  
3598 Highway 11  
Troveiers Rest, S.C. 29690  
OWNERS(S)

LINDSEY & ASSOCIATES, INC.  
SURVEYOR(S)

NO. OF ACRES 252 MILES OF NEW ROAD 4

NO. OF LOTS 146

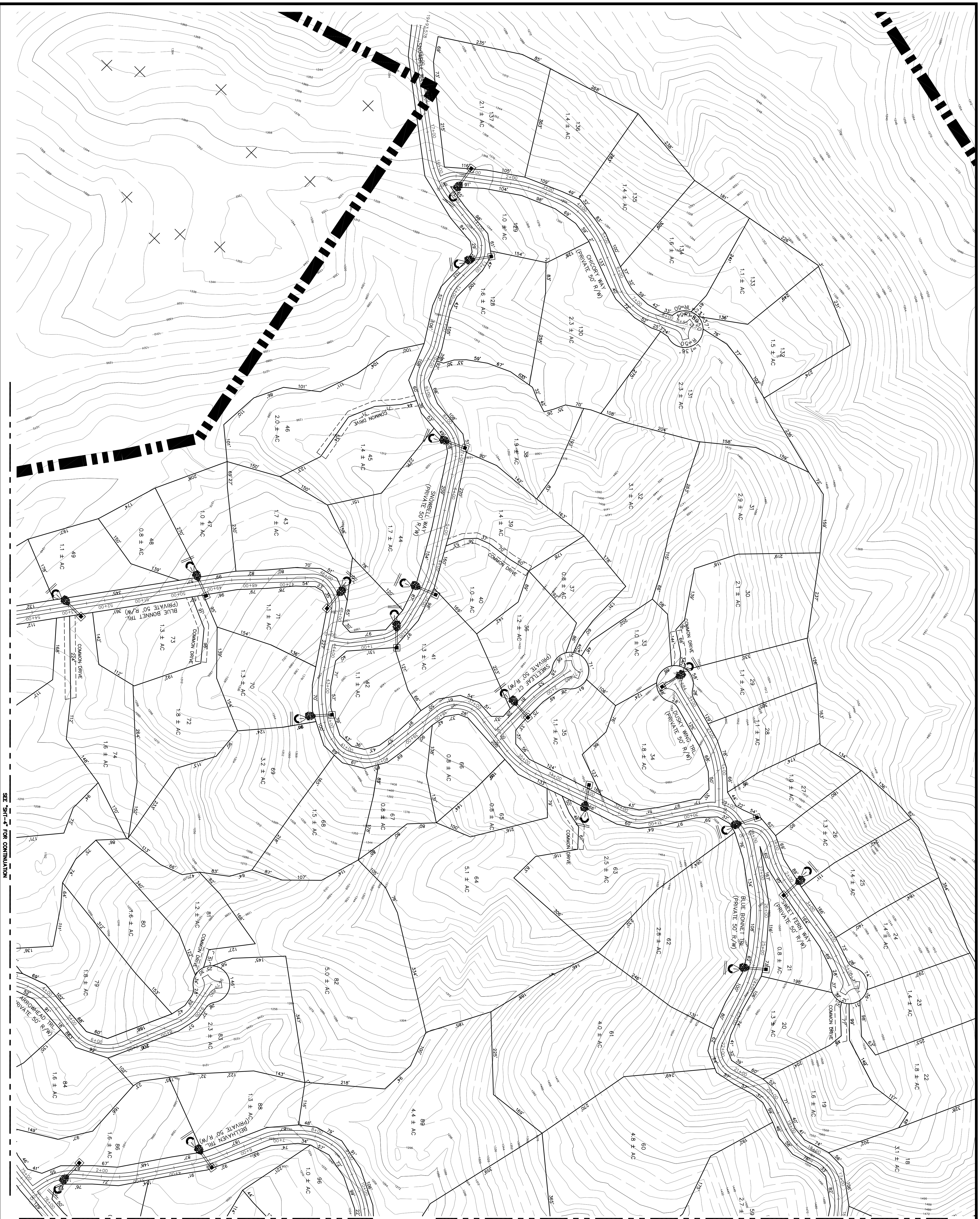
ZONED UNZONED DATE: Revised May 1, 2007



SEE "SHT-2" FOR CONTINUATION

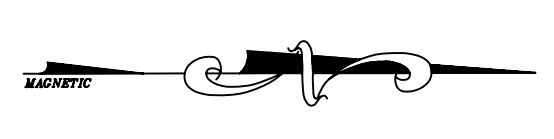
SEE "SHT-3" FOR CONTINUATION

SEE "SHT-2" FOR CONTINUATION



SEE "SHT-1" FOR CONTINUATION

SEE "SHT-3" FOR CONTINUATION

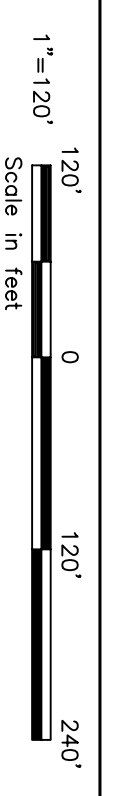


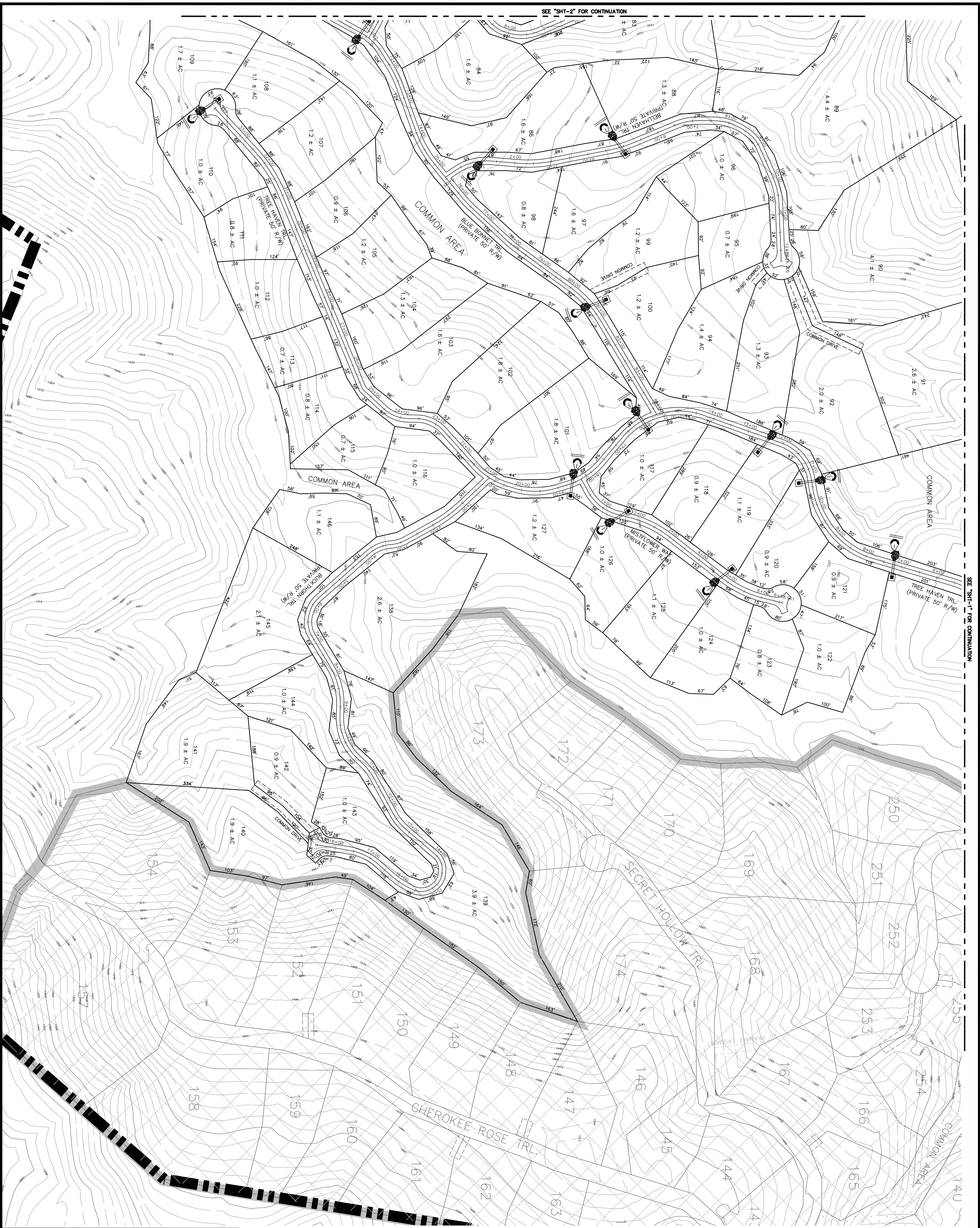
PRELIMINARY PLAT  
 (SHEET 2 OF 4)  
 CLIFFS MOUNTAIN PARK  
 PHASE 2A  
 TRACTS 1 THRU 146

James B. Anthony, Pres.  
 The Cliffs  
 3598 Highway 11  
 Travelers Rest, S.C. 29690  
 OWNERS(S)

LINDESEY & ASSOCIATES, INC.  
 SURVEYOR(S)

NO. OF ACRES	252	MILES OF NEW ROAD	4
NO. OF LOTS	146		
ZONED	UNZONED	DATE:	Revised May 1, 2007



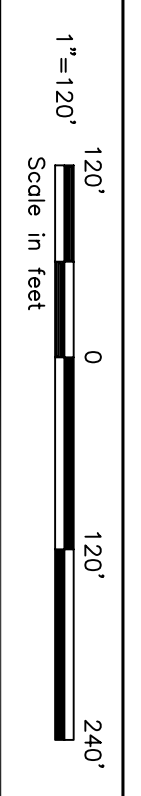


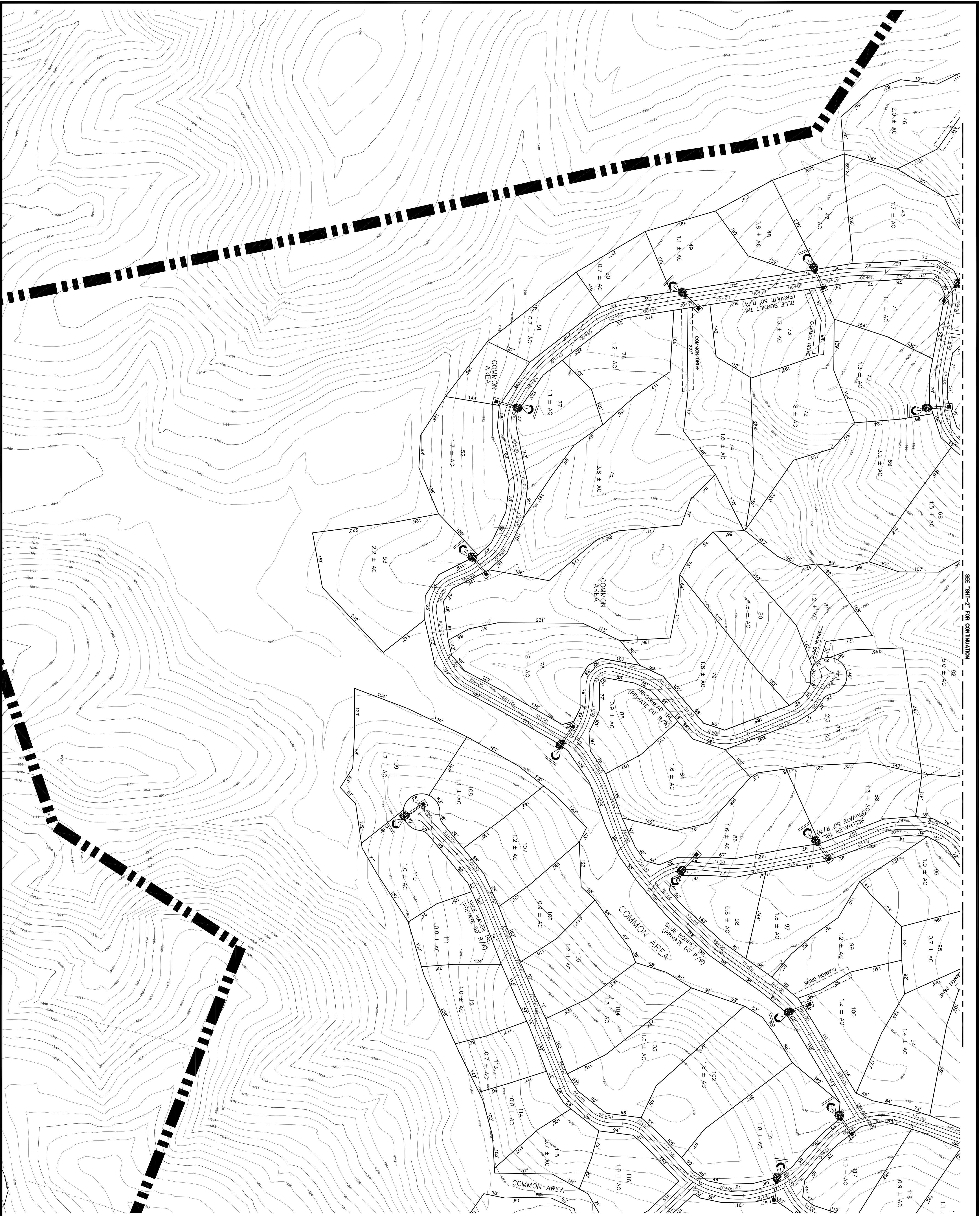
**PRELIMINARY PLAT**  
**(SHEET 3 OF 4)**  
**CLIFFS MOUNTAIN PARK**  
**PHASE 2A**  
**TRACTS 1 THRU 146**

James B. Anthony, Pres.  
 The Cliffs,  
 3598 Highway 11  
 Travelers Rest, S.C. 29690  
 OWNERS(S)

LINDSEY & ASSOCIATES, INC.  
 SURVEYOR(S)

NO. OF ACRES	252	MILES OF NEW ROAD	4
NO. OF LOTS	146		
ZONED	UNZONED	DATE:	Revised May 1, 2007





SEE 'SHT-2' FOR CONTINUATION

SEE 'SHT-3' FOR CONTINUATION



<b>PRELIMINARY PLAT (SHEET 4 OF 4)</b> <b>CLIFFS MOUNTAIN PARK</b> PHASE 2A TRACTS 1 THRU 146	
James B. Anthony, Pres. The Cliffs 3598 Highway 11 Travelers Rest, S.C. 29690 OWNER(S)	LUNDSEY & ASSOCIATES, INC. SURVEYOR(S)
NO. OF ACRES 252	MILES OF NEW ROAD 4
NO. OF LOTS 146	
ZONED UNZONED	DATE: Revised May 1, 2007

