

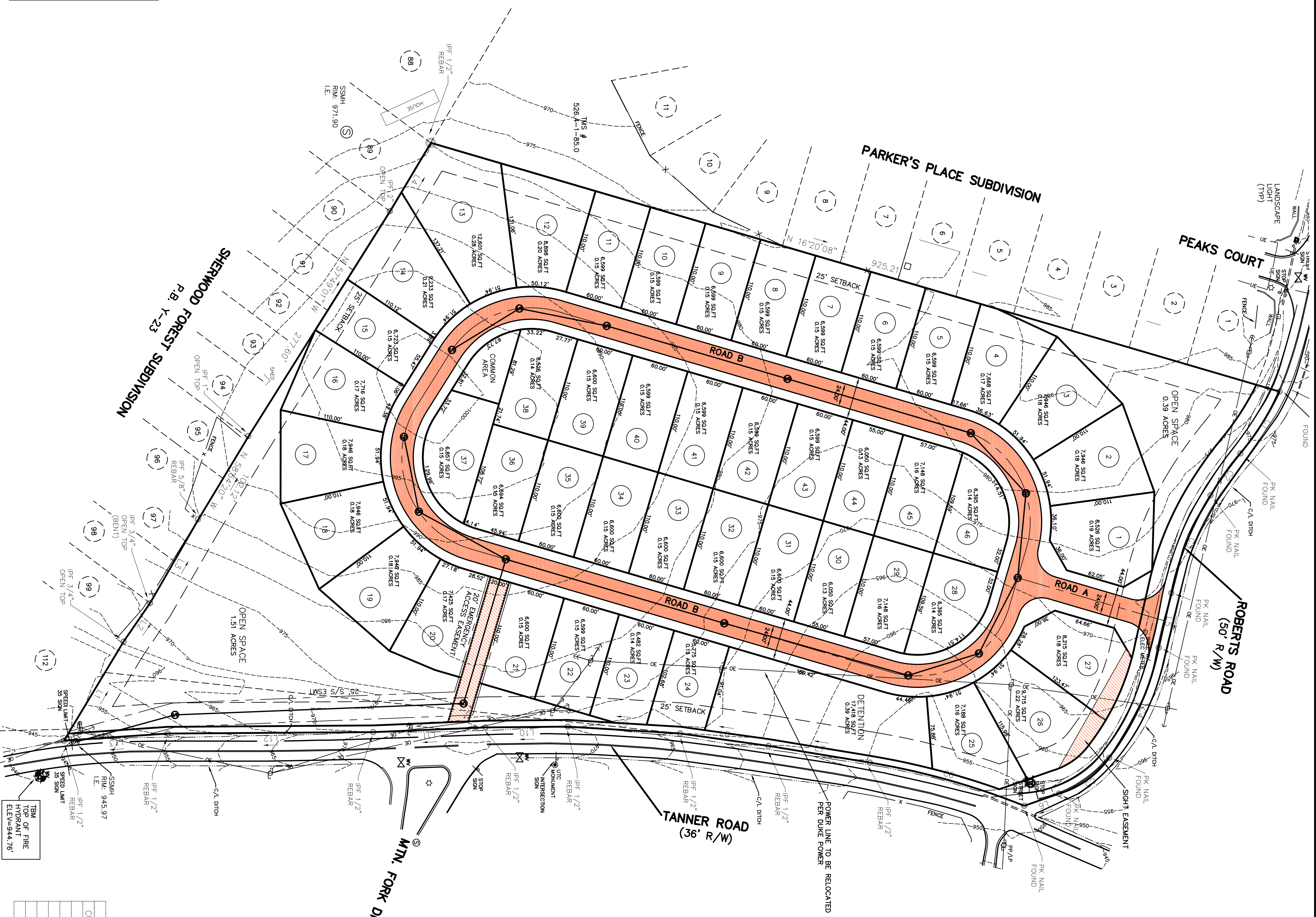
- NOTES:**
1. TAX MAP 526-2-1-1 ZONING: R-10 CLUSTER
 2. EACH ROAD HAS A RW WIDTH OF 44'.
 3. EACH CUL-DE-SAC HAS A RW RADIUS OF 50'.
 4. ALL DETENTION, AND COMMON AREAS TO BE OWNED AND MAINTAINED BY THE HOMEOWNERS ASSOCIATION. GREENVILLE COUNTY IS NOT RESPONSIBLE FOR THE MAINTENANCE OF DETENTION AREAS OR COMMON AREAS.

UTILITIES

SANITARY SEWER: TAYLORS FIRE& SEWER, 244-5596
 WATER: GREENVILLE WATER SYSTEM, 241-6100
 POWER: DUKE POWER, 234-4130
 GAS: PIEDMONT NATURAL GAS, 235-5844
 PHONE: BELLSOUTH, 255-3853
 CABLE: CHARTER COMMUNICATIONS, 877-9683

OPEN SPACE DATA (R-10 CLUSTER)

TOTAL AREA: 11.76 ACRES
 ALLOWABLE LOTS: 11.76 x 4.4 = 51
 TOTAL LOTS: 46 LOTS
 OPEN SPACE PROVIDED: 1.9 ACRES
 DEVELOPABLE OPEN SPACE REQD: 1.76 x 50% = 0.88 ACRES
 DEVELOPABLE OPEN SPACE PROVIDED: 1.9 ACRES

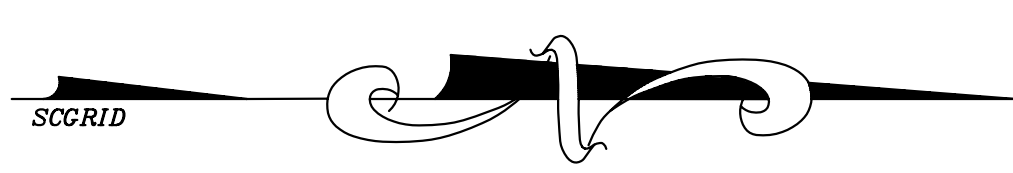


CURVE TABLE

CURVE	RADIUS	LENGTH	TANGENT	CHORD	BEARING	DELTA
C1	304.66'	76.81'	38.61'	76.61'	S 57°34'12" E	142°6'44"
C2	403.98'	53.80'	26.09'	53.86'	S 64°32'03" E	7°38'37"
C3	312.23'	110.72'	53.95'	110.14'	S 68°08'54" E	20°35'01"
C4	281.59'	127.37'	64.80'	126.29'	S 65°47'23" E	29°35'01"
C5	98.00'	65.63'	34.10'	64.41'	S 35°35'49" E	38°22'18"
C6	773.24'	168.19'	84.43'	167.86'	S 15°38'35" W	127°47'

LINE TABLE

LINE	LENGTH	BEARING
L1	120.84'	N 58°56'55" W
L2	48.93'	N 55°31'28" W
L3	101.11'	N 59°58'59" W
L4	83.28'	N 59°09'31" W
L5	58.62'	S 77°03'48" E
L6	38.70'	S 19°15'59" E
L7	107.34'	S 09°21'04" W
L8	93.41'	S 08°00'02" W
L9	117.66'	S 03°28'55" W
L10	86.28'	S 00°34'34" E
L11	117.42'	S 02°22'37" E
L12	215.00'	S 00°24'18" E
L13	108.77'	S 03°52'10" E



NO. OF LOTS: 46

NO. OF AGRES: 11.76

NO. OF LOTS: 46

NO. OF AGRES: 11.76

DATE: 9-5-07

ZONING: R-10 CLUSTER

SCALE: 1 inch = 60 ft. (IN FEET)

PEBBLE CREEK VILLAGE

PRELIMINARY

JACO DEVELOPMENT, LLC
 1000 GREENVILLE, S.C. 29680
 (864) 414-6040

FREELAND & ASSOCIATES, INC.
 1000 GREENVILLE, S.C. 29680
 (864) 271-4924 FAX (864) 233-0315

OWNER: _____ SURVEYOR: _____

