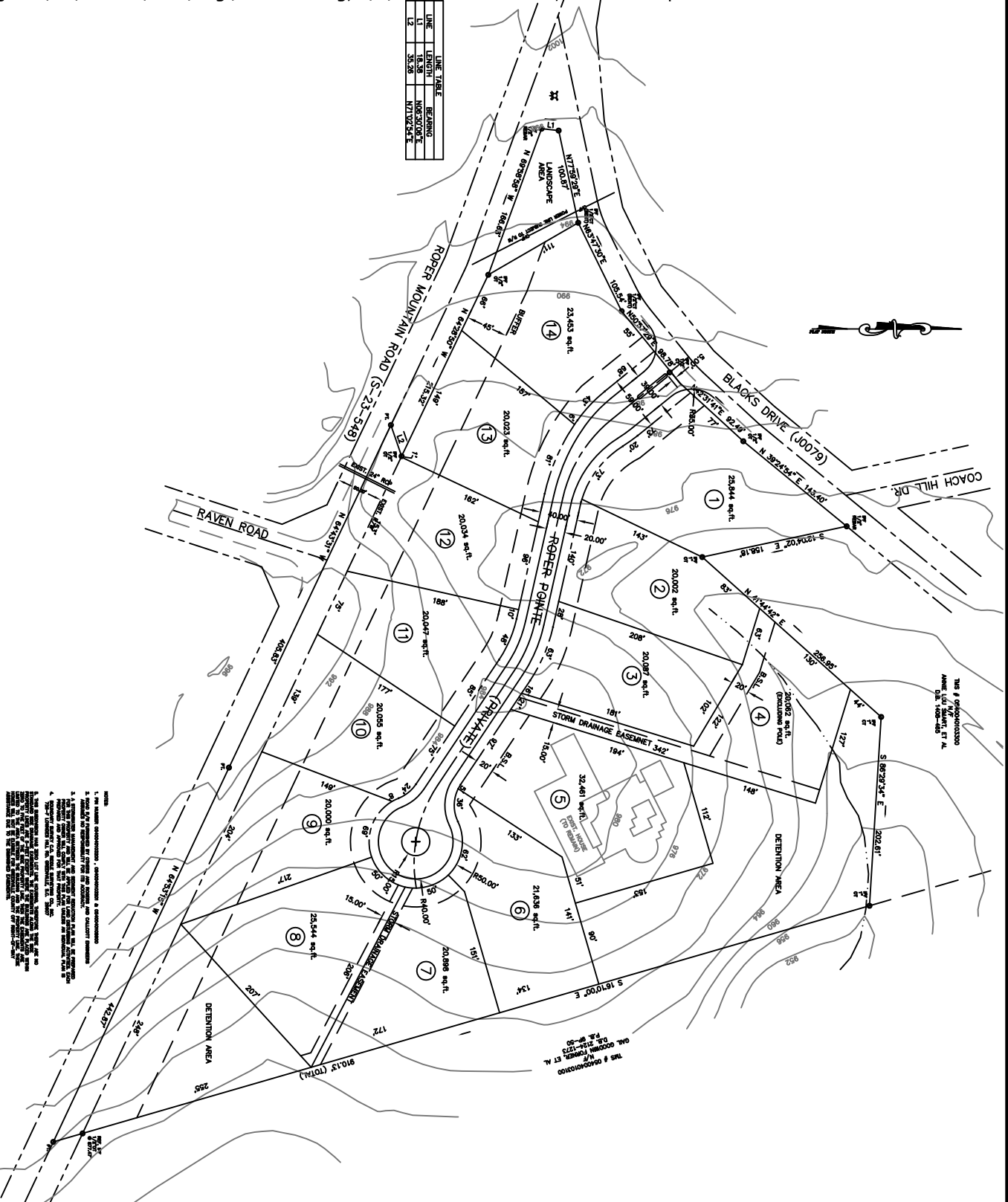


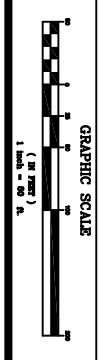
LINE	LENGTH	BEARING
L1	18.39	N08°30'00"E
L2	35.28	N71°02'54"E



NOTES:
 1. THE OWNER REPRESENTS, WARRANTS AND GUARANTEES THAT THE INFORMATION CONTAINED HEREIN IS TRUE AND CORRECT.
 2. THE ENGINEER HAS CONDUCTED A VISUAL GENERAL SURVEY OF THE SITE AND HAS FOUND NO OBVIOUS DISCREPANCIES.
 3. THE ENGINEER HAS CONDUCTED A VISUAL GENERAL SURVEY OF THE ADJACENT PROPERTIES AND HAS FOUND NO OBVIOUS DISCREPANCIES.
 4. THE ENGINEER HAS CONDUCTED A VISUAL GENERAL SURVEY OF THE ADJACENT PROPERTIES AND HAS FOUND NO OBVIOUS DISCREPANCIES.
 5. THE ENGINEER HAS CONDUCTED A VISUAL GENERAL SURVEY OF THE ADJACENT PROPERTIES AND HAS FOUND NO OBVIOUS DISCREPANCIES.
 6. THE ENGINEER HAS CONDUCTED A VISUAL GENERAL SURVEY OF THE ADJACENT PROPERTIES AND HAS FOUND NO OBVIOUS DISCREPANCIES.
 7. THE ENGINEER HAS CONDUCTED A VISUAL GENERAL SURVEY OF THE ADJACENT PROPERTIES AND HAS FOUND NO OBVIOUS DISCREPANCIES.
 8. THE ENGINEER HAS CONDUCTED A VISUAL GENERAL SURVEY OF THE ADJACENT PROPERTIES AND HAS FOUND NO OBVIOUS DISCREPANCIES.
 9. THE ENGINEER HAS CONDUCTED A VISUAL GENERAL SURVEY OF THE ADJACENT PROPERTIES AND HAS FOUND NO OBVIOUS DISCREPANCIES.
 10. THE ENGINEER HAS CONDUCTED A VISUAL GENERAL SURVEY OF THE ADJACENT PROPERTIES AND HAS FOUND NO OBVIOUS DISCREPANCIES.

THIS IS A PROFESSIONAL
 ENGINEERING DESIGN
 DRAWING

THIS IS A PROFESSIONAL
 ENGINEERING DESIGN
 DRAWING



NO. OF ACRES - 10.12
 NO. OF LOTS - 14
 ZONED - R-20
 DATE 9/5/07
 MILES OF NEW RD. - 0.13

PRELIMINARY PLAN
 "ROPER POINTE"

BLACKS ROAD DEVELOPERS, LLC.
 6008 POWERS COURT
 GREENVILLE, SC 29615
 DEVELOPER

ROGERS & CALLOTT ENGRS., INC.
 PO BOX 5645
 GREENVILLE, S.C. 29608
 ENGINEER

