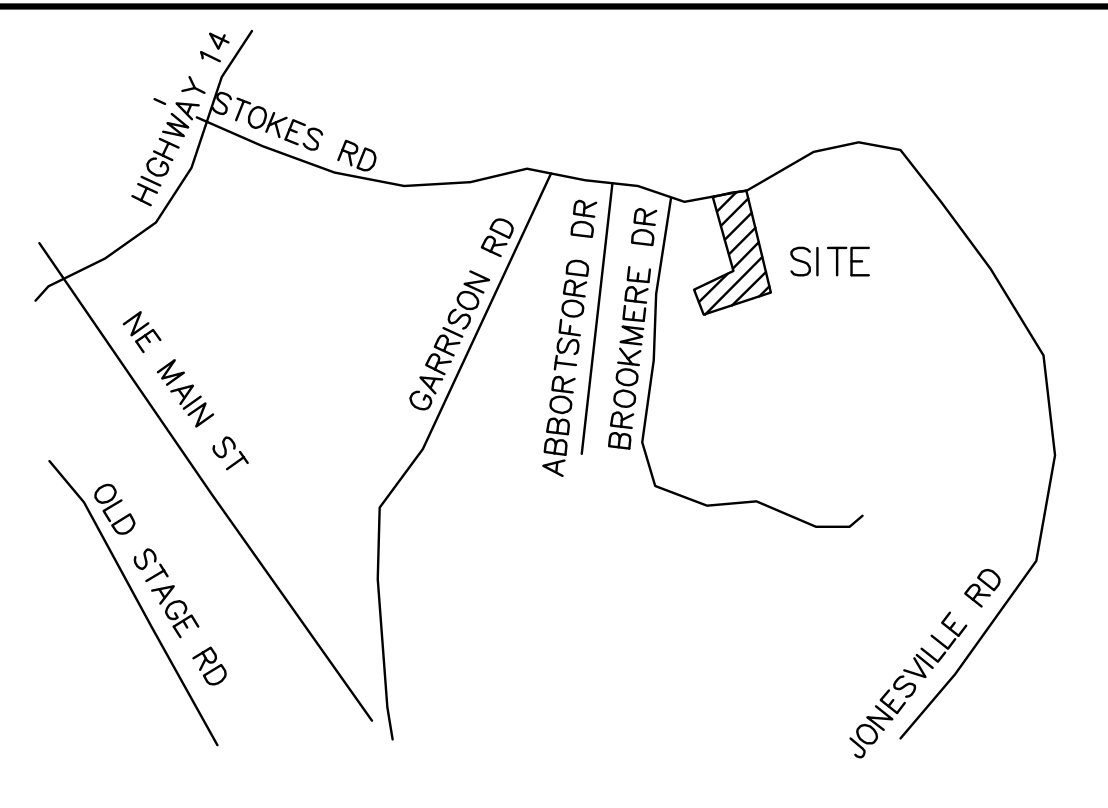


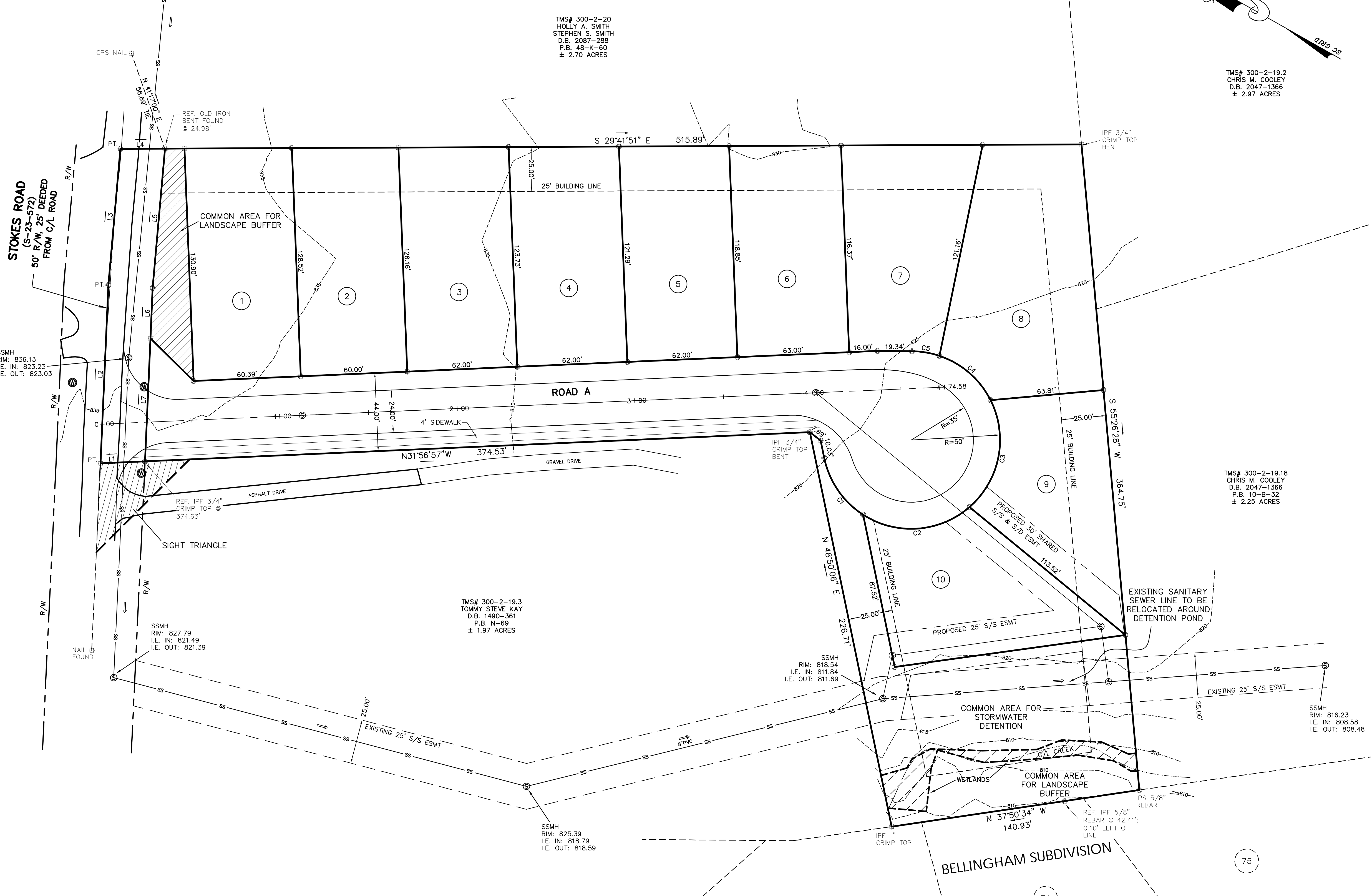
UTILITIES
 SANITARY SEWER: METROPOLITAN SEWER, 277-4442
 WATER: GREENVILLE WATER SYSTEM, 241-6100
 POWER: DUKE POWER, 234-4130
 GAS: PIEDMONT NATURAL GAS, 235-5844
 PHONE: BELLSOUTH, 255-3853
 CABLE: CHARTER COMMUNICATIONS, 877-9683

LINE	LENGTH	BEARING
L1	25.10'	N 31°56'57" W
L2	100.37'	N 63°03'55" E
L3	77.00'	N 65°38'09" E
L4	25.11'	S 29°41'51" E
L5	78.77'	S 65°38'09" W
L6	28.36'	S 63°03'55" W
L7	69.26'	S 63°03'55" W

CURVE	RADIUS	LENGTH	TANGENT	CHORD	BEARING	DELTA
C1	50.00'	39.80'	21.02'	38.76'	S 26°07'44" W	45°36'32"
C2	50.00'	64.35'	37.50'	60.00'	S 33°32'43" E	73°44'22"
C3	50.00'	66.06'	38.85'	61.36'	N 71°44'15" E	75°41'43"
C4	50.00'	39.09'	20.60'	38.10'	N 11°29'42" E	44°47'23"
C5	50.00'	15.76'	7.95'	15.70'	N 19°55'52" W	18°03'45"



LOCATION MAP



PRELIMINARY

STOKES PLACE

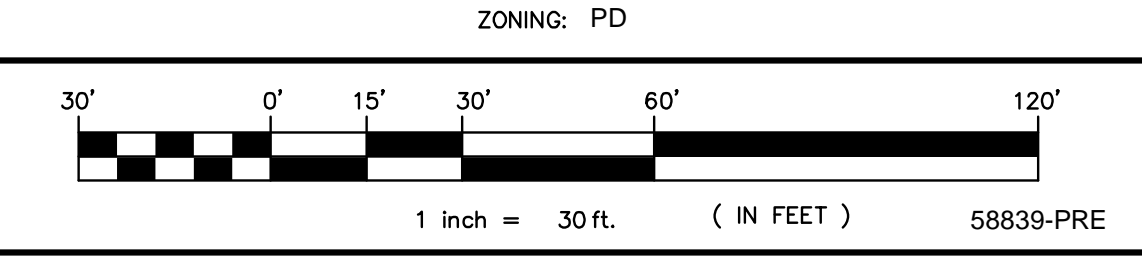
J.D. AND ASSOCIATES, LLC
 14-B EAST BUTLER ROAD
 MAULDIN, S.C. 29662
 (864) 990-4190 FAX (864) 752-1584

FREELAND & ASSOCIATES, INC.
 323 WEST STONE AVE.
 GREENVILLE, S.C. 29609
 (864) 271-4924 FAX (864) 233-0315

OWNER: J.D. AND ASSOCIATES, LLC
 SURVEYOR: FREELAND & ASSOCIATES, INC.

NO. OF ACRES: 2.88
 MILES OF NEW ROAD: 0.09

NO. OF LOTS: 10
 DATE: 5-7-08



NOTES:

- TAX MAP # 300-2-19.6. ZONING: PD
- ROAD A HAS A R/W WIDTH OF 44' AND AN ASPHALT WIDTH OF 24'.
- THE CUL-DE-SAC ON ROAD A HAS A R/W RADIUS OF 50' AND AN ASPHALT RADIUS OF 35'.
- ALL DETENTION, AND COMMON AREAS TO BE OWNED AND MAINTAINED BY THE HOMEOWNERS ASSOCIATION. GREENVILLE COUNTY IS NOT RESPONSIBLE FOR THE MAINTENANCE OF DETENTION AREAS OR COMMON AREAS.

LOT #	SQ.FT.	ACREAGE
1	7,833	0.18
2	7,460	0.18
3	7,746	0.18
4	7,595	0.17
5	7,444	0.17
6	7,409	0.17
7	7,609	0.17
8	10,340	0.24
9	7,045	0.16
10	7,657	0.18