

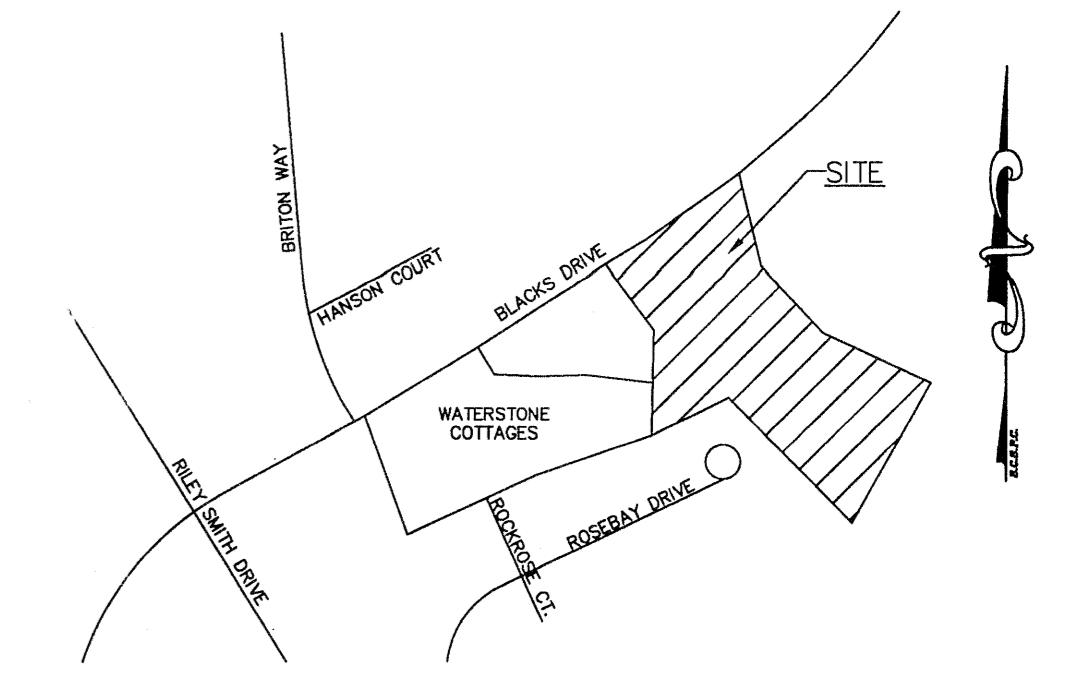
NOTES

1. No vehicular access to Blacks Drive from newly created lots. Interior access only.
2. Boundary and topographic survey by others.
3. All roads are private and shall be maintained by the homeowners association.
4. Tax Map No. 0540040101103 and 0540040101111
5. Sanitary Sewer to be 8".

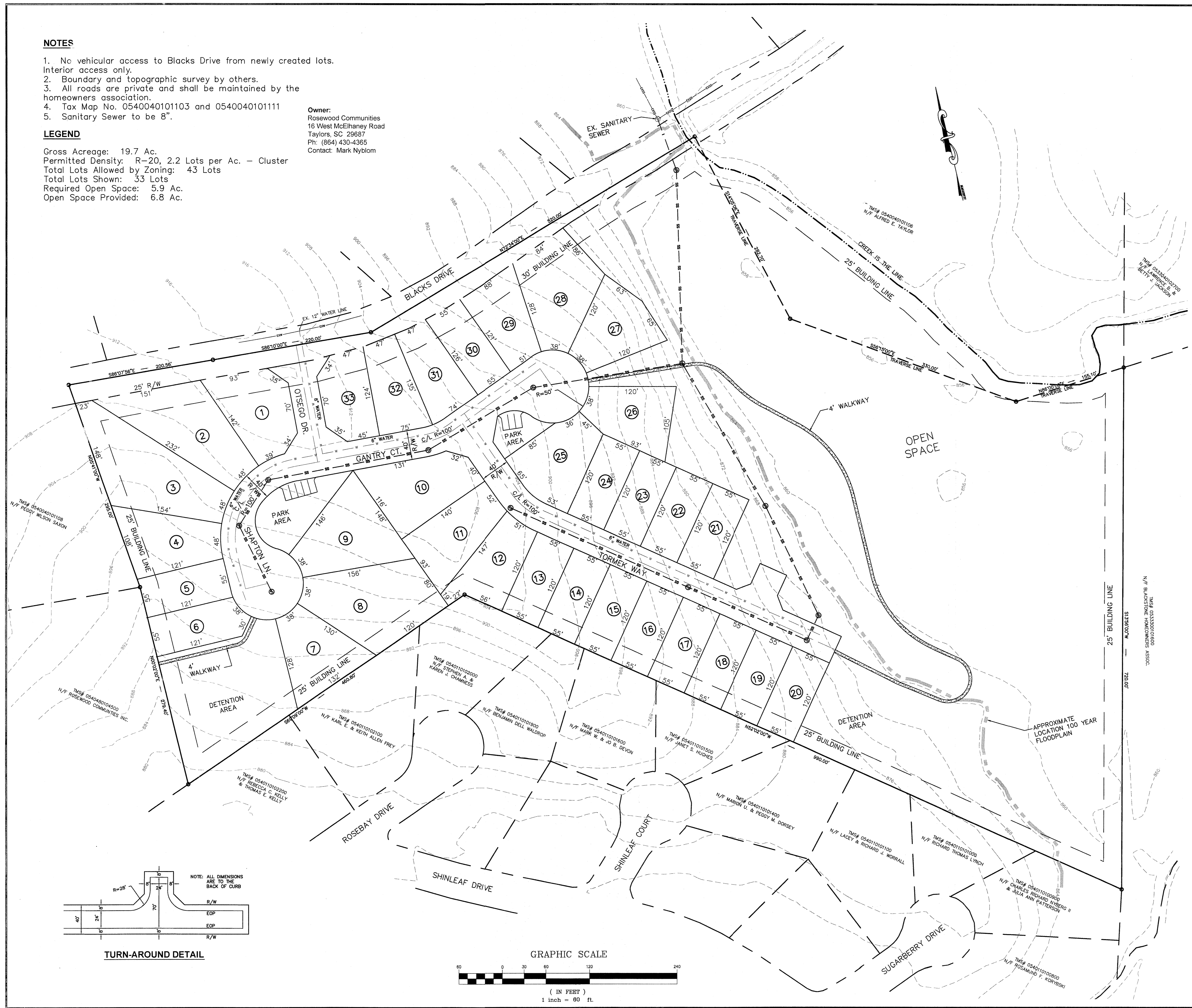
LEGEND

Gross Acreage: 19.7 Ac.
 Permitted Density: R-20, 2.2 Lots per Ac. - Cluster
 Total Lots Allowed by Zoning: 43 Lots
 Total Lots Shown: 33 Lots
 Required Open Space: 5.9 Ac.
 Open Space Provided: 6.8 Ac.

Owner:
 Rosewood Communities
 16 West McElhanev Road
 Taylors, SC 29687
 Ph: (864) 430-4365
 Contact: Mark Nyblom



VICINITY MAP



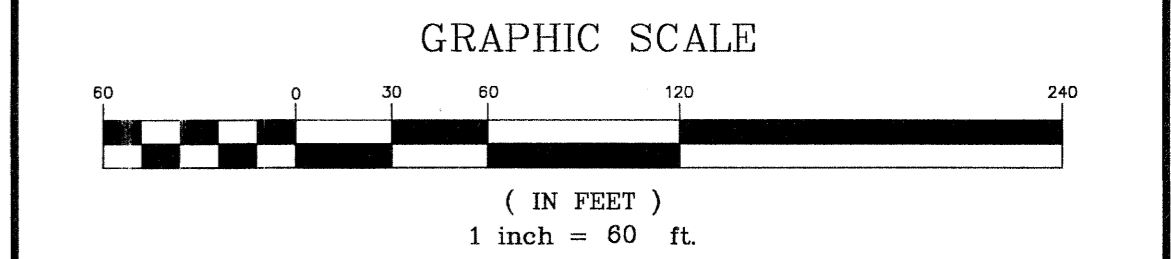
2014-113

PRELIMINARY PLAN

WATERSTONE COTTAGES Ph II

Rosewood Communities, Inc. Owner
 Reichert Consulting, LLC Engineer

Total Acreage: 19.7 Ac. Miles of New Road: 0.2 mi.
 Number of Lots: 33 Lots Date: 3-26-14



REICHERT CONSULTING, LLC
 Land Development Services

104 Litten Way
 Greenville, SC 29615
 reichertconsulting@gmail.com
 Ph: 864-270-3397
 Fax: 864-243-8354

